

SHOCK BOX COVERS

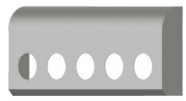
Iowa Customs Ghost Mount Internal structure is easily installed without drilling any holes or double sided tape. The paintable smooth aluminum or #8 304 Non-Directional Polished Stainless Steel box covers the sleeper shock suspension. Clean finished look when installed with our sleeper air bag covers.

FITMENT:

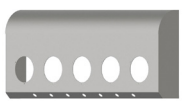
- Peterbilt
- 379, 386 & 389

FINISH & DESIGN:

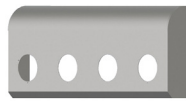
- Round top Design - Smooth Aluminum Only
- 45 Degree Top Design- #8 304 Non-Directional Polished Stainless Steel



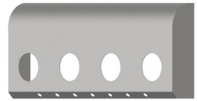
(5) - 4 inch light holes
001



(5) - 4 inch light holes with 7 bullets
002



(4) - 4 inch light holes
003



(4) - 4 inch light holes with 7 bullets
004



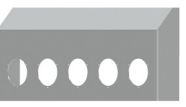
(10) 3/4" light holes on 45 degree face
005



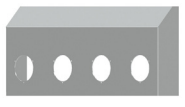
(7) 3/4" light holes on 45 degree face
007



Blank
008



(5) - 4 inch light holes
021



(4) - 4 inch light holes
022



TRUCK MFG	PRODUCT FAMILY	PRODUCT NAME	FINISH			
Peterbilt	1	Shock Box Covers	72	*#8 304 Non-Directional Polished Stainless Steel	14	
		Round Top Design	Round Top Design with (5) 4" Lights on Face Only	001	Smooth Aluminum	21
			Round Top Design with (5) 4" Lights on Face and (7) 3/4" Lights on 45 Degree Flange	002		
			Round Top Design with (4) 4" Lights on Face Only	003		
			Round Top Design with (4) 4" Lights on Face and (7) 3/4" Lights on 45 Degree Flange	004		
			Round Top Design with (10) 3/4" Lights on Face Only	005		
			Round Top Design with (10) 3/4" Lights on Face and (7) 3/4" Lights on 45 Degree Flange	006		
			Round Top Design with (7) 3/4" Lights on 45 Degree Flange Only	007		
			Round Top Design - Blank with No Light Holes	008		
		45 Degree Top Design				
			45 Degree Top Design with No Holes	020		
			45 Degree Top Design with (5) 4" Lights on Face	021		
			45 Degree Top Design with (4) 4" Lights on Face	022		

* Stocked Finish