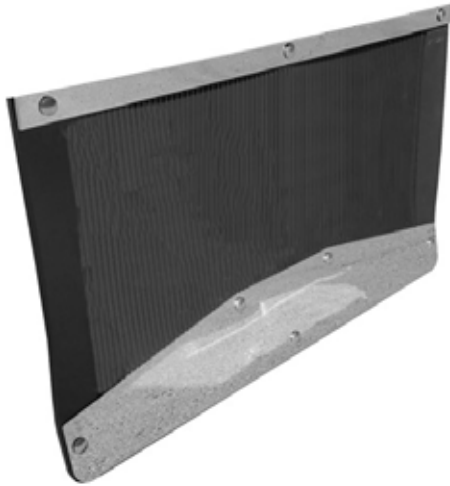


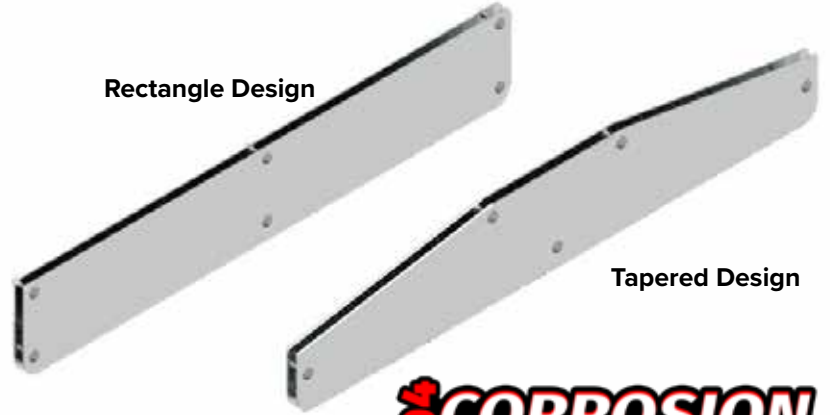
FLAP WEIGHTS



Our patented Curl Free Flap Weight System, made from 16GA #8 304 Non-Directional Polished Stainless Steel, eliminates the dreaded mud flap curl. The system's double bend design with an interlocking back plate assures years of use and comes with all polished stainless steel mounting hardware!



Rectangle Design



Tapered Design



UNIVERSAL
FITMENT
GUIDE

PRODUCT INFORMATION

Fitment: See QR Code

Part #	Size	Flap Fitment	Information	Finish
IC989001-14	3 in. x 12 in. Tapered Design	Fits 0 in. - 1/2 in. Thick Flap	Sold in Pairs	#8 304 Polished Stainless Steel
IC989002-14	3 in. x 14 in. Tapered Design	Fits 0 in. - 1/2 in. Thick Flap	Sold in Pairs	#8 304 Polished Stainless Steel
IC989003-14	3 in. x 16 in. Tapered Design	Fits 0 in. - 1/2 in. Thick Flap	Sold in Pairs	#8 304 Polished Stainless Steel
IC989004-14	3 in. x 18 in. Tapered Design	Fits 0 in. - 1/2 in. Thick Flap	Sold in Pairs	#8 304 Polished Stainless Steel
IC989005-14	3 in. x 20 in. Tapered Design	Fits 0 in. - 1/2 in. Thick Flap	Sold in Pairs	#8 304 Polished Stainless Steel
IC989006-14	3 in. x 24 in. Tapered Design	Fits 0 in. - 1/2 in. Thick Flap	Sold in Pairs	#8 304 Polished Stainless Steel
IC989007-14	4 in. x 12 in. Tapered Design	Fits 0 in. - 1/2 in. Thick Flap	Sold in Pairs	#8 304 Polished Stainless Steel
IC989008-14	4 in. x 14 in. Tapered Design	Fits 0 in. - 1/2 in. Thick Flap	Sold in Pairs	#8 304 Polished Stainless Steel
IC989009-14	4 in. x 16 in. Tapered Design	Fits 0 in. - 1/2 in. Thick Flap	Sold in Pairs	#8 304 Polished Stainless Steel
IC989010-14	4 in. x 18 in. Tapered Design	Fits 0 in. - 1/2 in. Thick Flap	Sold in Pairs	#8 304 Polished Stainless Steel
IC989011-14	4 in. x 20 in. Tapered Design	Fits 0 in. - 1/2 in. Thick Flap	Sold in Pairs	#8 304 Polished Stainless Steel
IC989012-14	4 in. x 24 in. Tapered Design	Fits 0 in. - 1/2 in. Thick Flap	Sold in Pairs	#8 304 Polished Stainless Steel
IC989013-14	5 in. x 18 in. Tapered Design	Fits 0 in. - 1/2 in. Thick Flap	Sold in Pairs	#8 304 Polished Stainless Steel
IC989014-14	5 in. x 24 in. Tapered Design	Fits 0 in. - 1/2 in. Thick Flap	Sold in Pairs	#8 304 Polished Stainless Steel
IC989015-14	6 in. x 24 in. Tapered Design	Fits 0 in. - 1/2 in. Thick Flap	Sold in Pairs	#8 304 Polished Stainless Steel
IC989016-14	7 in. x 24 in. Tapered Design	Fits 0 in. - 1/2 in. Thick Flap	Sold Individually	#8 304 Polished Stainless Steel
IC989017-14	8 in. x 24 in. Tapered Design	Fits 0 in. - 1/2 in. Thick Flap	Sold Individually	#8 304 Polished Stainless Steel
IC989018-14	9 in. x 24 in. Tapered Design	Fits 0 in. - 1/2 in. Thick Flap	Sold Individually	#8 304 Polished Stainless Steel
IC989025-14	2 in. x 12 in. Rectangle Design	Fits 0 in. - 1/2 in. Thick Flap	Sold in Pairs	#8 304 Polished Stainless Steel
IC989026-14	2 in. x 14 in. Rectangle Design	Fits 0 in. - 1/2 in. Thick Flap	Sold in Pairs	#8 304 Polished Stainless Steel
IC989027-14	2 in. x 16 in. Rectangle Design	Fits 0 in. - 1/2 in. Thick Flap	Sold in Pairs	#8 304 Polished Stainless Steel
IC989028-14	2 in. x 18 in. Rectangle Design	Fits 0 in. - 1/2 in. Thick Flap	Sold in Pairs	#8 304 Polished Stainless Steel
IC989029-14	2 in. x 20 in. Rectangle Design	Fits 0 in. - 1/2 in. Thick Flap	Sold in Pairs	#8 304 Polished Stainless Steel
IC989030-14	2 in. x 24 in. Rectangle Design	Fits 0 in. - 1/2 in. Thick Flap	Sold in Pairs	#8 304 Polished Stainless Steel

