

AIR CLEANER PANELS

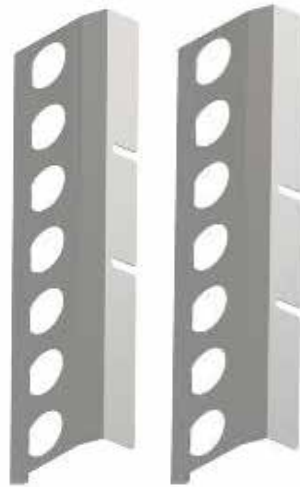
Crafted from 304 Corrosion Resistant #8 Non-Directional Stainless-Steel Finish, the Iowa Customs Kenworth Air Cleaner Panels adds the perfect detail to your rig! Available in multiple hole configurations, light hole counts and fitments. Please refer to our fitment guide for correct fitment.



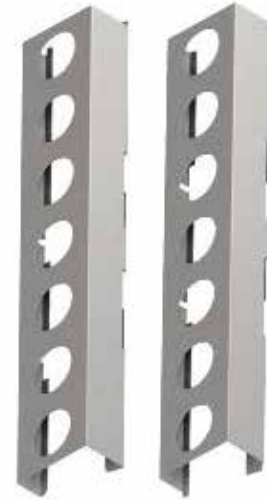
KENWORTH



IC267023-14



IC267024-14



IC267025-14



KENWORTH
FITMENT
GUIDE



PRODUCT INFORMATION

Part #	Product	Size	Location	Light Holes	Finish	Fitment
IC267022-14	Air Cleaner Light Panels	15 in.	Back Side	(6) 2 in.	#8 304 Polished Stainless Steel	See QR Code
IC267023-14	Air Cleaner Light Panels	19 7/8 in.	Front Side	(6) 2 in.	#8 304 Polished Stainless Steel	See QR Code
IC267024-14	Air Cleaner Light Panels	15 in.	Back Side	(7) 2 in.	#8 304 Polished Stainless Steel	See QR Code
IC267025-14	Air Cleaner Light Panels	15 in.	Front Side	(7) 2 in.	#8 304 Polished Stainless Steel	See QR Code

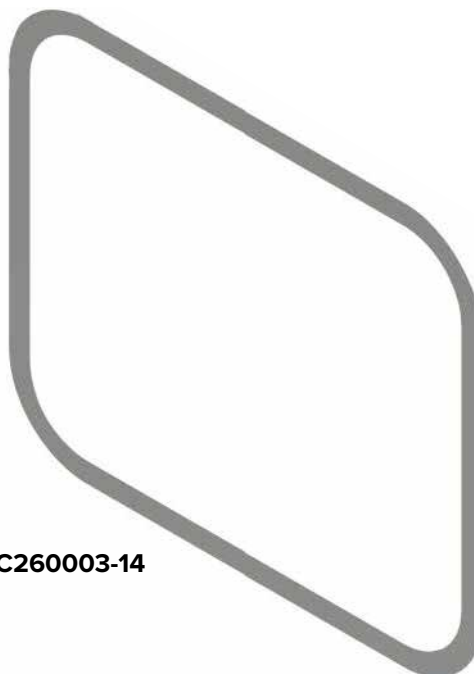
SLEEPER DOOR WINDOW TRIMS



Crafted from 304 Corrosion Resistant #8 Non-Directional Stainless Steel Finish, the Iowa Customs Sleeper Door Trims comes in two different kits – Sleeper Door Window Trim only or the Sleeper Door Trim and Surrounds. These kits fit perfectly and attach with 3M VHB Tape so it allows for a tool-less installation.



IC260002-14



IC260003-14



KENWORTH
FITMENT
GUIDE



PRODUCT INFORMATION

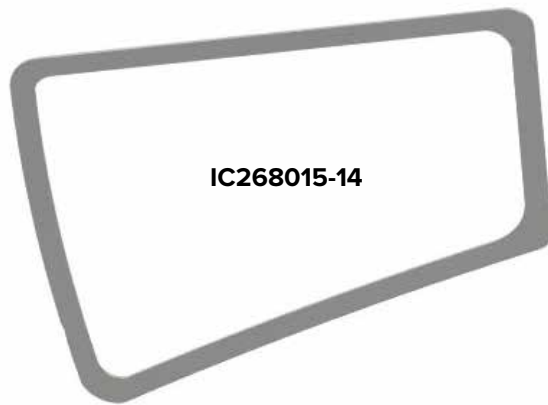
Part #	Product	Number of Parts	Finish	Fitment
IC260002-14	Sleeper Studio Door Window Trim Kit	(1) Inside, (1) Outside	#8 304 Polished Stainless Steel	See QR Code
IC260003-14	Sleeper Studio Door Window Trim	(1) Surrounds Window Frame	#8 304 Polished Stainless Steel	See QR Code

DEF TANK ACCESSORIES



KENWORTH

Engineered from 304 Corrosion Resistant #8 Non-Directional Stainless Steel, the Kenworth DEF Tank Fill Trim is designed to add the perfect detail to your rig! Attach with 3M VHB tape so installation is tool-less! Please refer to our fitment guide for correct fitment.



KENWORTH
FITMENT
GUIDE



PRODUCT INFORMATION

Part #	Product	Additional Information	Finish	Fitment
IC268015-14	DEF Tank Filler Panel Trim	Sold Individually	#8 304 Polished Stainless Steel	See QR Code



*Red Denotes Product

WINDOW TRIMS

Crafted from 304 Corrosion Resistant #8 Non-Directional Polished Stainless Steel Finish, the Iowa Customs Door Trims give the outside of your rig a sleek and sharp look with easy installation. Sold in pairs, these window trims fit perfectly to T680, T880 and W990 models, and attach with 3M VHB Tape so it allows for a tool-less installation. See our fitment guide for more to confirm fitments.



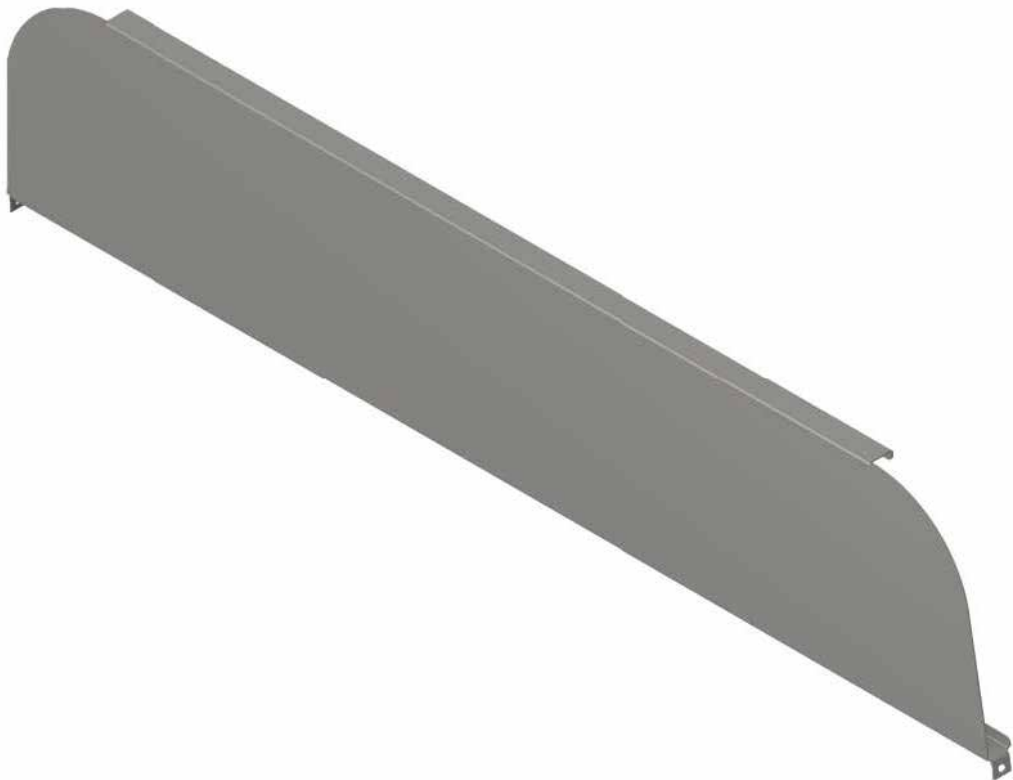
PRODUCT INFORMATION

Part #	Product	Additional Information	Finish	Fitment
IC280200-14	Door Window Trim	Sold in Pairs	#8 304 Polished Stainless Steel	See QR Code

WINDOW CHOPS



Want that Chopped Look? Iowa Customs Window Chops are designed and expertly engineered from 304 Corrosion Resistant #8 Non-Directional Stainless Steel to achieve that specific look!



PRODUCT INFORMATION

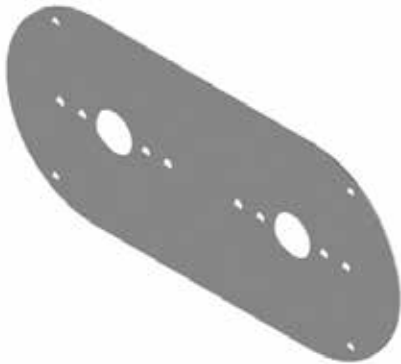
Part #	Product	Information	Finish	Fitment
IC280003-14	6 in. Window Chops	Sold in Pairs	#8 304 Polished Stainless Steel	See QR Code

ABOVE DOOR DOME PANELS

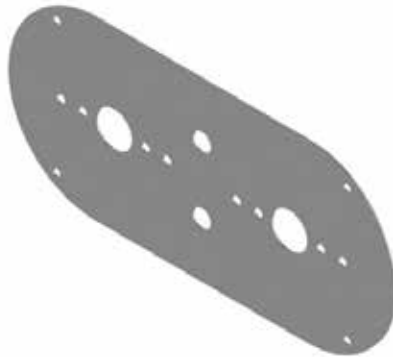


KENWORTH

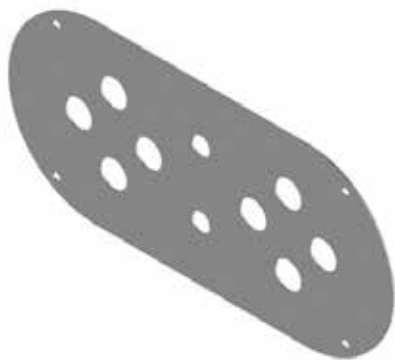
Interior Above Door Dome Panels are exactly what you're looking for to customize your rigs interior! Designed and crafted from 304 Corrosion Resistant #8 Non-Directional Stainless Steel, the Iowa Customs Door Dome Panels install in your existing truck dome mounting holes, so no drilling is required. Additionally, there are multiple light hole configurations!



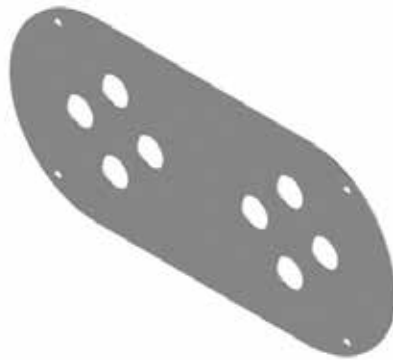
IC966020-14



IC966021-14



IC966023-14



IC966024-14

304 CORROSION RESISTANT
304 Stainless Steel | Rust Free | Weather Proof



KENWORTH
FITMENT
GUIDE



PRODUCT INFORMATION

Part #	Light Holes	Switch Hole	Finish	Fitment
IC966020-14	2 - Watermelon	No	#8 304 Polished Stainless Steel	Kenworth W900
IC966021-14	2 - Watermelon	Yes	#8 304 Polished Stainless Steel	Kenworth W900
IC966023-14	8 - 3/4 in. Mini Button	Yes	#8 304 Polished Stainless Steel	Kenworth W900
IC966024-14	8 - 3/4 in. Mini Button	No	#8 304 Polished Stainless Steel	Kenworth W900

FENDER GUARDS & SHIELDS



Designed specifically for the guarding of your fenders! Expertly crafted from 304 Corrosion Resistant #8 Non-Directional Stainless Steel, these 14GA fender shields will stand up to all the elements. Sold as pairs and hardware is not included! Please refer to the fitment guide to confirm fitment.



IC164015-14



IC164016-14



PETERBILT
FITMENT
GUIDE



PRODUCT INFORMATION

Fitment: See QR Code

Part #	Product	Information	Side Details	Finish
IC164015-14	Peterbilt 379 Fender Shield	Sold in Pairs	(1) Left, (1) Right	#8 304 Polished Stainless Steel
IC164016-14	Fender Guards for Double JJ Blinker Bar	Sold in Pairs	(1) Left, (1) Right	#8 304 Polished Stainless Steel

HOOD ACCESSORIES



Iowa Customs Hood Accessories are available in a few different variations. Each trim piece is crafted from #8 304 Non-Directional Corrosion Resistant Stainless Steel to withstand all the elements. The center hood trim is expertly engineered to fit perfectly on-top of the hood whereas the side hood trims have the rivet dome integrated into the part for that perfect fit. Center Trim is sold each and side hood trims are sold as pairs. Please refer to fitment guide to confirm fitment.



IC164001-14



IC164002-14



IC164010-14

PRODUCT INFORMATION

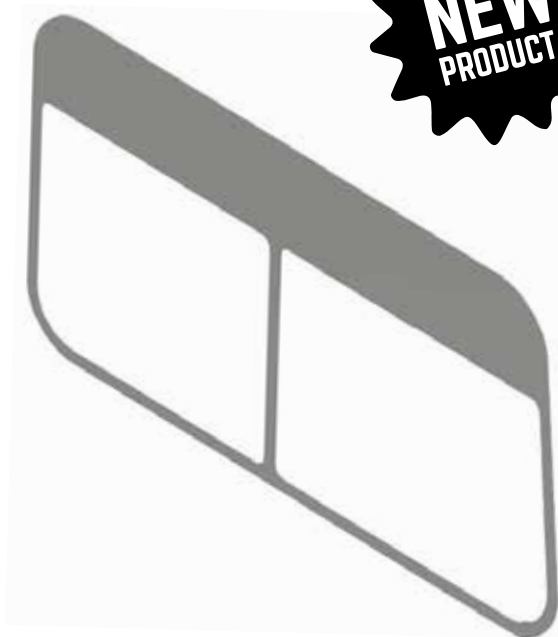
Part #	Product	Dimples	Information	Side Information	Finish	Fitment
IC164001-14	Hood Extension Panels	No	Sold in Pairs	(1) Left, (1) Right	#8 304 Polished Stainless Steel	See QR Code
IC164002-14	Hood Extension Panels	Yes	Sold in Pairs	(1) Left, (1) Right	#8 304 Polished Stainless Steel	See QR Code
IC164010-14	Wide Top of Hood Trim	Yes	Sold Individually	(1) Center	#8 304 Polished Stainless Steel	See QR Code

SLEEPER WINDOW TRIMS

Crafted from 304 Corrosion Resistant #8 Non-Directional Stainless Steel Finish, the Iowa Customs Sleeper Door Trims comes in two different Kits – Sleeper Door Window Trim only or the Sleeper Door Trim and Surrounds. These Kits fit perfectly and attach with 3M VHB Tape so it allows for a tool-less installation.

- Sold in Pairs

304 CORROSION RESISTANT
304 Stainless Steel | Rust Free | Weather Proof



PETERBILT



PETERBILT
FITMENT
GUIDE

PRODUCT INFORMATION

Part #	Product	Side Information	Finish	Fitment
IC160001-14	Sleeper Window Trim with 5 in. Chopped Look	(1) Left, (1) Right	#8 304 Polished Stainless Steel	See QR Code



WINDOW TRIM KITS

Peterbilt Front Window Trims from Iowa Customs fits around on the factory trim for an OEM fit and finish. Crafted from #8 304 Non-Directional Corrosion Resistant Stainless Steel, these are sold with (1) Drivers & (1) Passenger Side Window Trim with (1) Center Post Trim to complete the set. Please refer to fitment guide for proper fitment.



PRODUCT INFORMATION

Part #	Product	Information	Finish	Fitment
IC180100-14	Window Trim Kit	(1) Left, (1) Right and (1) Center Trim	#8 304 Polished Stainless Steel	See QR Code

FRAME COVERS



Iowa Customs Frame Covers and Overhead Consoles are expertly crafted from 304 Corrosion resistant #8 Finish Stainless Steel and adds another level of customization to your rig. Please refer to our fitment guide for correct fitment.



IC161001-14



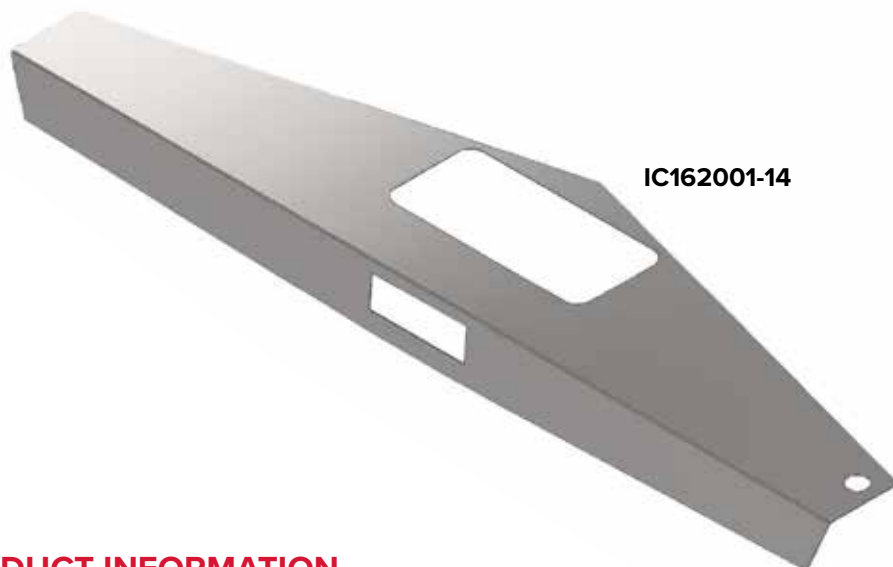
PETERBILT
FITMENT
GUIDE



PRODUCT INFORMATION

Part #	Product	Finish	Fitment
IC161001-14	Frame Cover with Notch Cutout for Steel Crossmembers	#8 304 Polished Stainless Steel	See QR Code

OVERHEAD CONSOLES



IC162001-14



PRODUCT INFORMATION

Part #	Product	Finish	Fitment
IC162001-14	Overhead Console Trim	#8 304 Polished Stainless Steel	See QR Code

VISORS

Iowa Customs Drop Visor engineered from Corrosion Resistant #8 304 Non-Directional Stainless steel comes in a variety of sizes and styles. The Standard 2-Piece configuration is available in either a Standard Mount or Blind Mound option.



IC163002-14



PETERBILT
FITMENT
GUIDE



PRODUCT INFORMATION

Part #	Product	Finish	Fitment
IC163002-14	11 in. Blind Mount Drop Visor	#8 304 Polished Stainless Steel	See QR Code

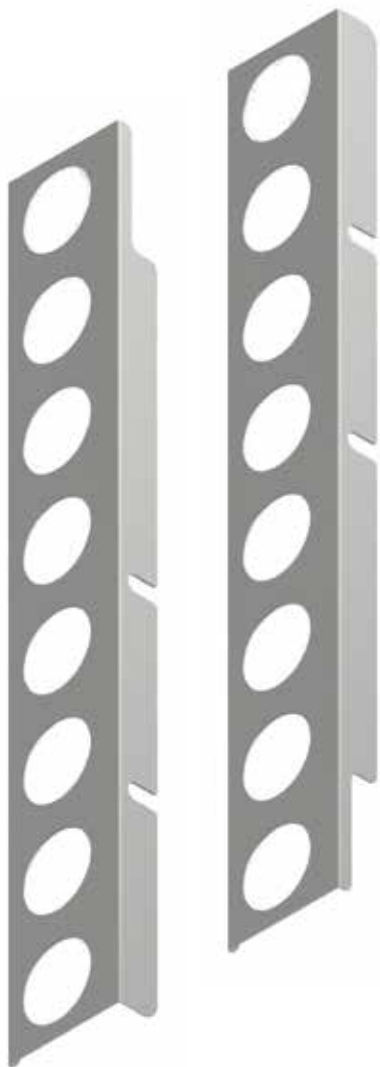
AIR CLEANER PANELS



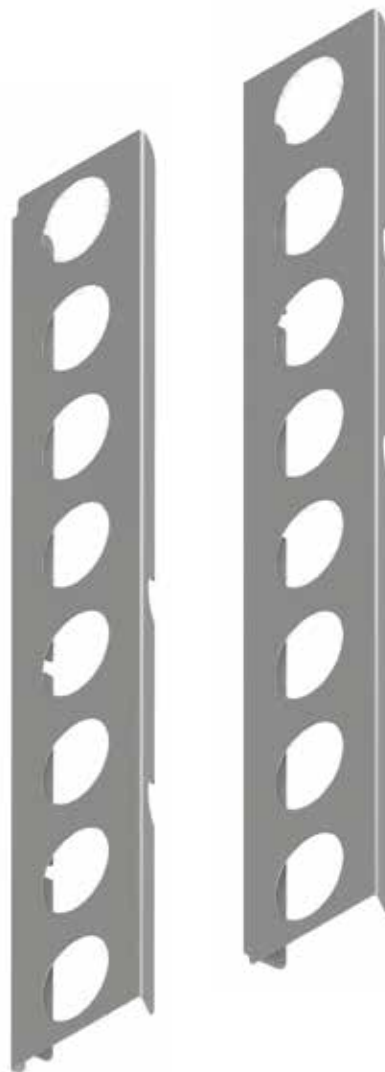
Crafted from 304 Corrosion Resistant #8 Non-Directional Stainless-Steel Finish, the Iowa Customs Peterbilt Air Cleaner Panels adds the perfect detail to your rig! Please refer to our fitment guide for correct fitment.



PETERBILT
FITMENT
GUIDE



IC167020-14



IC167021-14



PRODUCT INFORMATION

*Lights not included

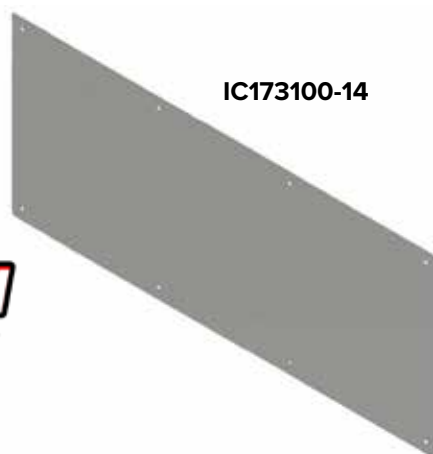
Part #	Product	Light Holes	Installation	Finish	Fitment
IC167020-14	Air Cleaner Light Panels	(8) 2 in. Light Holes	Back Side	#8 304 Polished Stainless Steel	See QR Code
IC167021-14	Air Cleaner Light Panels	(8) 2 in. Light Holes	Front Side	#8 304 Polished Stainless Steel	See QR Code

BATTERY, BOOT & TOOLBOX COVERS

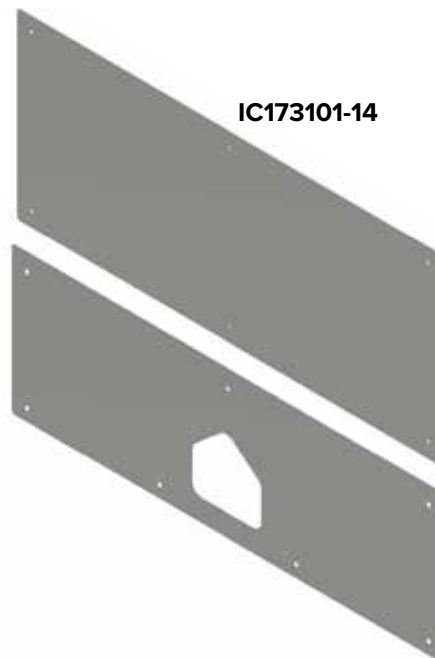


PETERBILT

Customize your rig with our superior battery box and permit panels. Crafted with the highest quality #8 304 Non Directional Polished Stainless Steel, Iowa Customs panels are designed to protect your truck from all elements and stay looking sharp while you are on the road.



IC173100-14



IC173101-14



PETERBILT
FITMENT
GUIDE

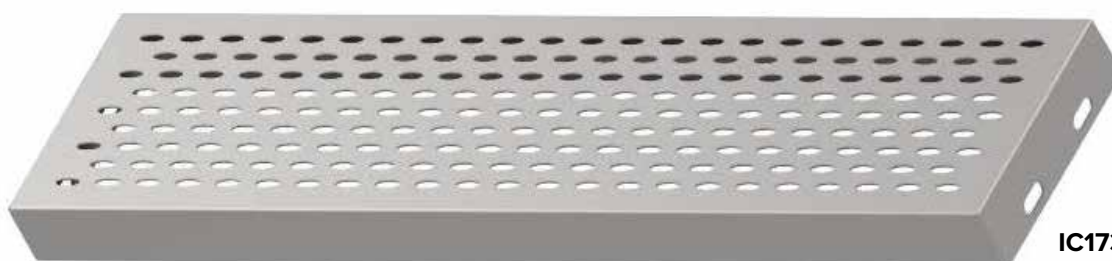


PRODUCT INFORMATION

Part #	Product	Finish	Fitment
IC173100-14	Battery Box Permit Panel Covers	#8 304 Polished Stainless Steel	See QR Code
IC173101-14	Battery & Tool Box Permit Panel Covers	#8 304 Polished Stainless Steel	See QR Code

LOWER REPLACEMENT STEPS

Keep your steps looking sharp and stay safe! Iowa Customs Lower Replacement Steps are sold individually and designed to keep you steady getting in and out. Crafted from our corrosion resistant #8 304 Non Directional Polished Stainless Steel, our steps will stay guarded from rough weather conditions and are made to last.



IC173102-14

PRODUCT INFORMATION

Part #	Product	Finish	Fitment
IC173102-14	Lower Replacement Step for Tool Box or Battery Box	#8 304 Polished Stainless Steel	See QR Code

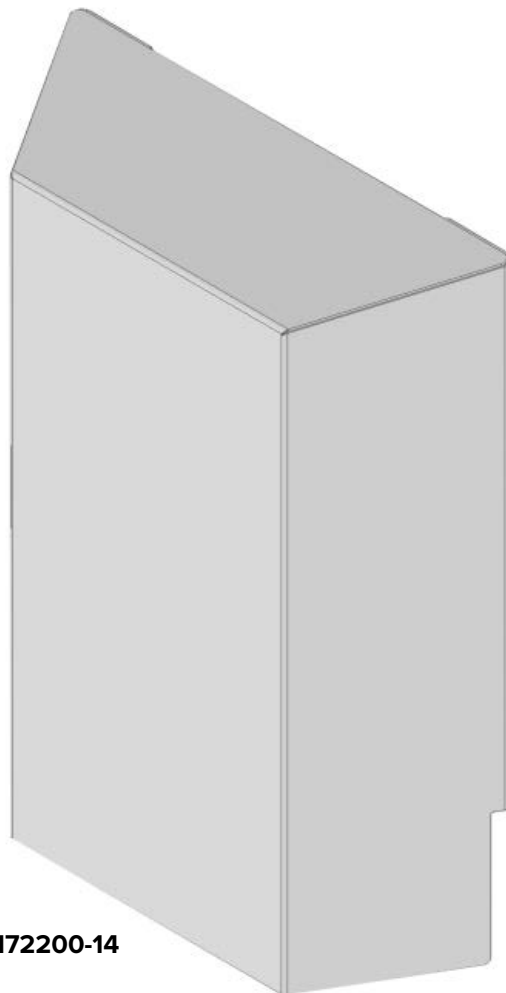
SHOCK BOX COVERS



Iowa Customs Shock Box Covers split design were designed for the “Tool-Less” installation. Pre-Installed 3M VHB Tape will aid in easy installation. Crafted from 304 Corrosion Resistant #8 Finish Stainless Steel, our Shock Box Covers will give your sleeper the clean and sleek look. Please refer to our fitment guide for correct fitment.



PETERBILT
FITMENT
GUIDE



IC172200-14



PRODUCT INFORMATION

Part #	Product	Information	Finish	Fitment
IC172200-14	Shock Box Cover for Rear Sleeper	Sold Individually	#8 304 Polished Stainless Steel	See QR Code

FUEL TANK SADDLE COVERS



Fuel Tank Saddle Covers hide the mechanical workings of the tank straps. If you are looking for ultimate customization, look no further. Our exclusive “Tool-Less” installation, utilizes 3M VHB tape so no tools are needed for installation. Iowa Customs craftsmanship and manufactured from 304 Corrosion Resistant #8 Non-Directional Stainless Steel, you can be sure that your rig will look Top Notch. Please refer to our fitment guide to confirm fitment.



IC168010-14



IC168011-14



PETERBILT
FITMENT
GUIDE



PRODUCT INFORMATION

Part #	Product	Radius	Information	Finish	Fitment
IC168010-14	Fuel Tank Saddle Cover	Full Radius	Sold in Pairs	#8 304 Polished Stainless Steel	See QR Code
IC168011-14	Fuel Tank Saddle Cover	Partial Radius	Sold in Pairs	#8 304 Polished Stainless Steel	See QR Code

FRONT BUMPER ACCESSORIES



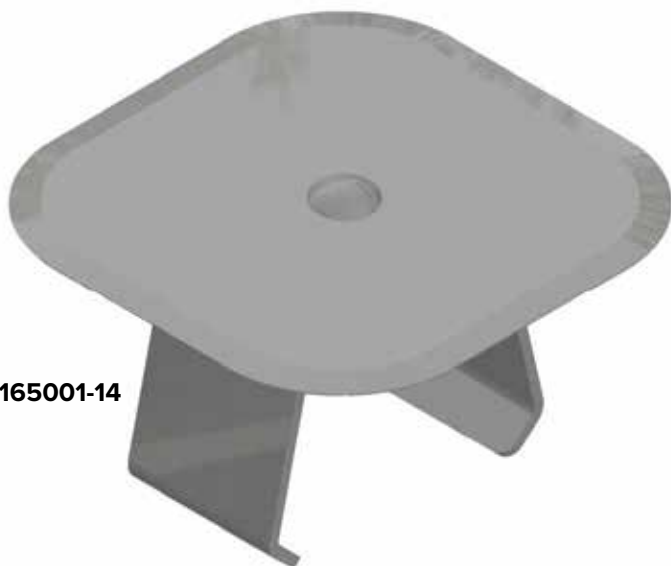
Front bumper accessories are here! Iowa Customs Tow Pin Covers are expertly crafted from 304 Corrosion resistant #8 Finish Stainless Steel and adds another level of customization to your rig. Please refer to our fitment guide for correct fitment.



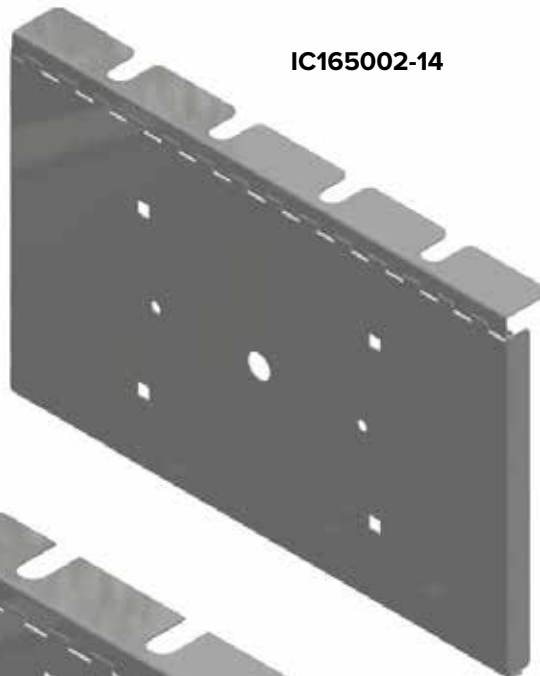
PETERBILT
FITMENT
GUIDE



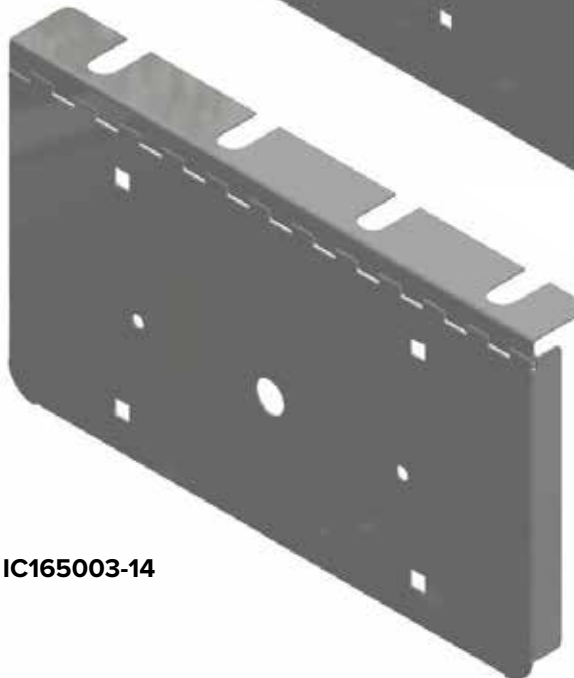
IC165001-14



IC165002-14



IC165003-14



PRODUCT INFORMATION

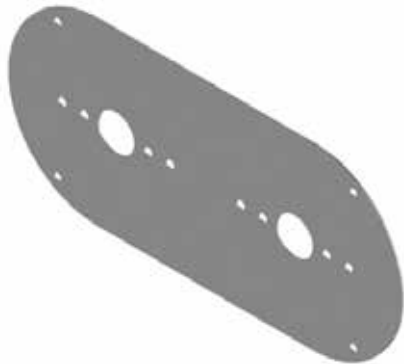
Part #	Product	Finish	Fitment
IC165001-14	Tow Pin Cover	#8 304 Polished Stainless Steel	See QR Code
IC165002-14	Extra Small Tow Pin Cover	#8 304 Polished Stainless Steel	See QR Code
IC165003-14	License Plate Tow Pin Cover	#8 304 Polished Stainless Steel	See QR Code

ABOVE DOOR DOME PANELS

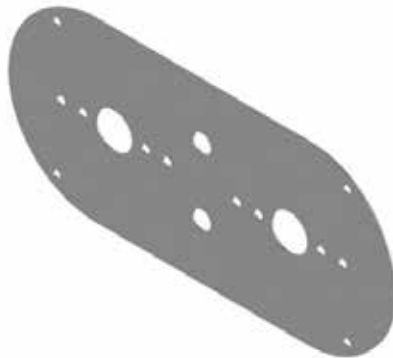


PETERBILT

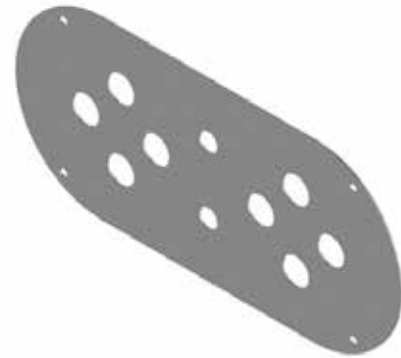
Interior Above Door Dome Panels are exactly what you're looking for to customize your rigs interior! Designed and crafted from 304 Corrosion Resistant #8 Non-Directional Stainless Steel, the Iowa Customs Door Dome Panels install in your existing truck dome mounting holes, so no drilling is required. Additionally, there are multiple light hole configurations!



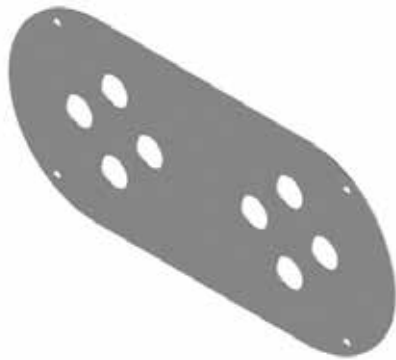
IC966020-14



IC966021-14



IC966023-14



IC966024-14



IC166022-14



PETERBILT
FITMENT
GUIDE



304 CORROSION RESISTANT
304 Stainless Steel | Rust Free | Weather Proof

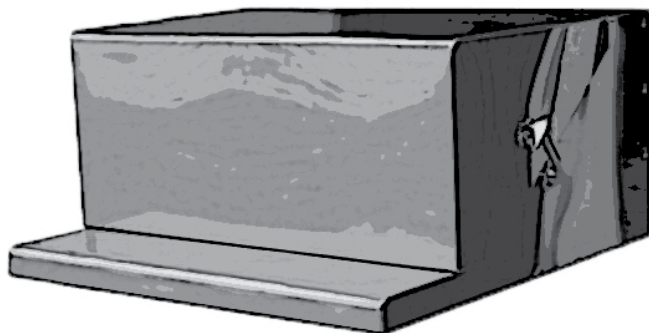
PRODUCT INFORMATION

Part #	Light Holes	Switch Hole	Finish	Fitment
IC966020-14	2 - Watermelon	No	#8 304 Polished Stainless Steel	Peterbilt 359, 379 & 389
IC966021-14	2 - Watermelon	Yes	#8 304 Polished Stainless Steel	Peterbilt 359, 379 & 389
IC966023-14	8 - 3/4 in. Mini Button	Yes	#8 304 Polished Stainless Steel	Peterbilt 359, 379 & 389
IC966024-14	8 - 3/4 in. Mini Button	No	#8 304 Polished Stainless Steel	Peterbilt 359, 379 & 389
IC166022-14	1 - Watermelon	No	#8 304 Polished Stainless Steel	Peterbilt 389

BATTERY BOXES



Crafted and manufactured from the best 11GA 304 #8 Non-Directional Corrosion Resistant Stainless Steel, Iowa Customs' Battery Box is engineered to withstand years of use. Engineered with internal structure for added strength. Installation utilizes existing brackets on your truck! The Chrome Latch allows for ease of lid removal for access to vital components. Sold individually.



PETERBILT
FITMENT
GUIDE



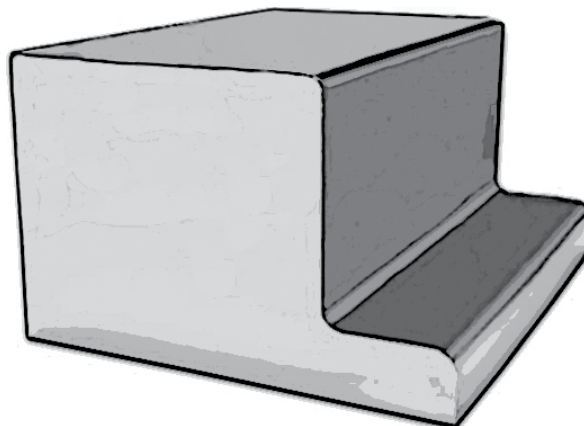
PRODUCT INFORMATION

Part #	Product	Dimensions	Finish	Fitment
IC173203-14	Battery Box	30 in. x 30 in. x 15 in.	#8 304 Polished Stainless Steel	Peterbilt 378, 379, 388, 389

SLIP COVERS

Iowa Customs Slip Covers offers a great looking solution without the cost of replacing the entire box. Engineered with internal structure withstand daily use and crafted from 14GA 304 #8 Non-Directional Corrosion Resistant Stainless Steel. Includes Heavy Duty Latches for easy removal.

- Sold in pairs



PRODUCT INFORMATION

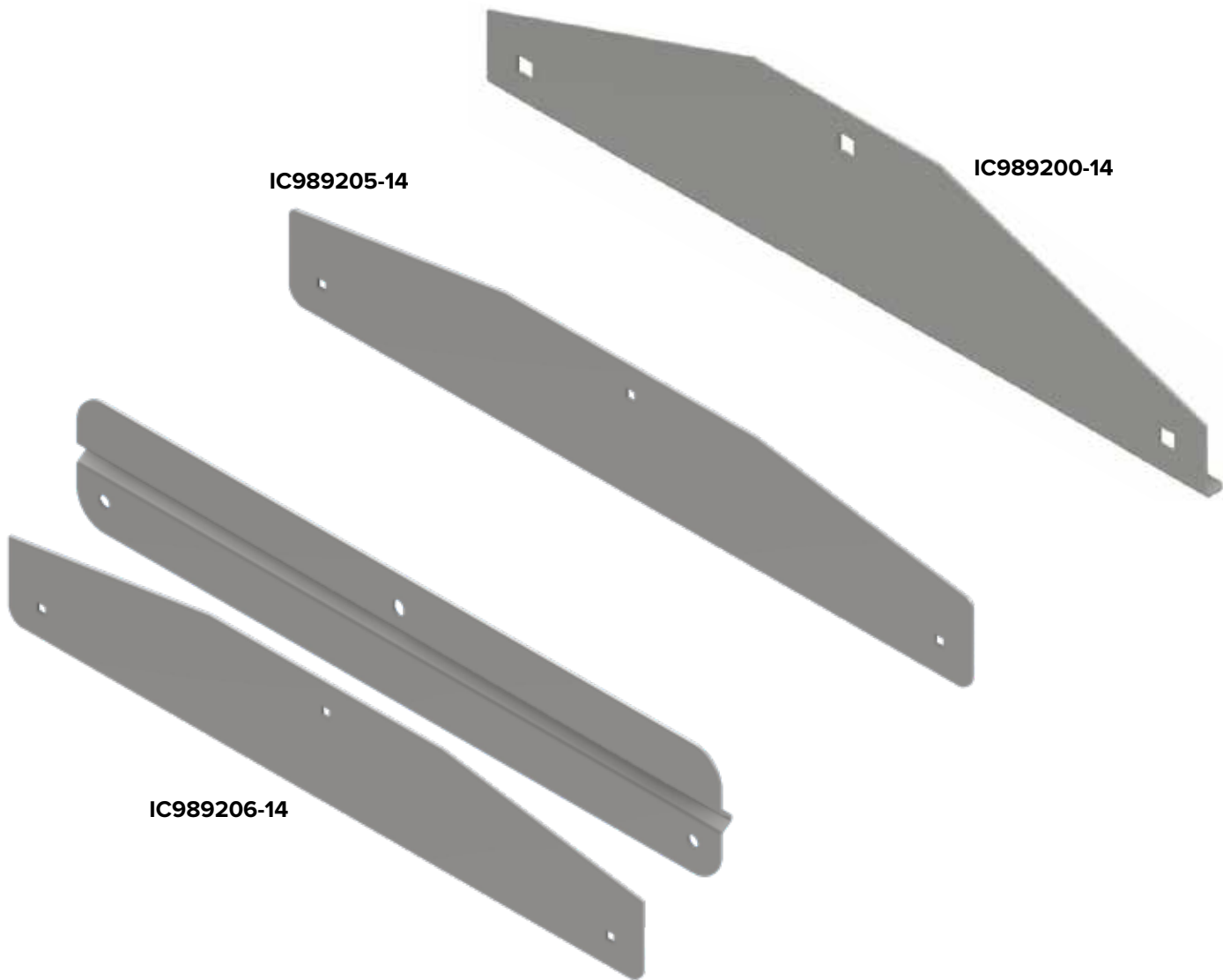
Part #	Product	Dimensions	Finish	Fitment
IC173200-14	Slip Cover	33 in. x 28 in. x 20 in.	#8 304 Polished Stainless Steel	Peterbilt 378, 379, 388, 389

FLAP WEIGHTS

Iowa Customs Flap Weights are made from Corrosion Resistant 18ga #8 304 Non-Directional Polished Stainless Steel. A bottom bend helps eliminate curling to provide years of use.



UNIVERSAL



UNIVERSAL
FITMENT
GUIDE



PRODUCT INFORMATION



Part #	Size	Backing Plate	Information	Finish	Fitment
IC989200-14	3 in. x 14 in. Tapered Design	Backing Plate Not Included	Sold as Pair	#8 304 Polished Stainless Steel	See QR Code
IC989201-14	3 in. x 16 in. Tapered Design	Backing Plate Not Included	Sold as Pair	#8 304 Polished Stainless Steel	See QR Code
IC989202-14	3 in. x 18 in. Tapered Design	Backing Plate Not Included	Sold as Pair	#8 304 Polished Stainless Steel	See QR Code
IC989205-14	4 in. x 24 in. Tapered Design	Backing Plate Not Included	Sold as Pair	#8 304 Polished Stainless Steel	See QR Code
IC989206-14	4 in. x 24 in. Tapered Design	Includes Backing Plate	Sold as Pair	#8 304 Polished Stainless Steel	See QR Code

ANTI-SAILS

Iowa Customs 14GA #8 304 Non-Directional Polished Stainless Steel Anti-Sail Brackets are engineered with the top flap mount for an integrated and sleek design. Sold in pairs.



UNIVERSAL
FITMENT
GUIDE



IC974005-14



IC974003-14



IC974004-14

304 CORROSION RESISTANT
304 Stainless Steel | Rust Free | Weather Proof

PRODUCT INFORMATION

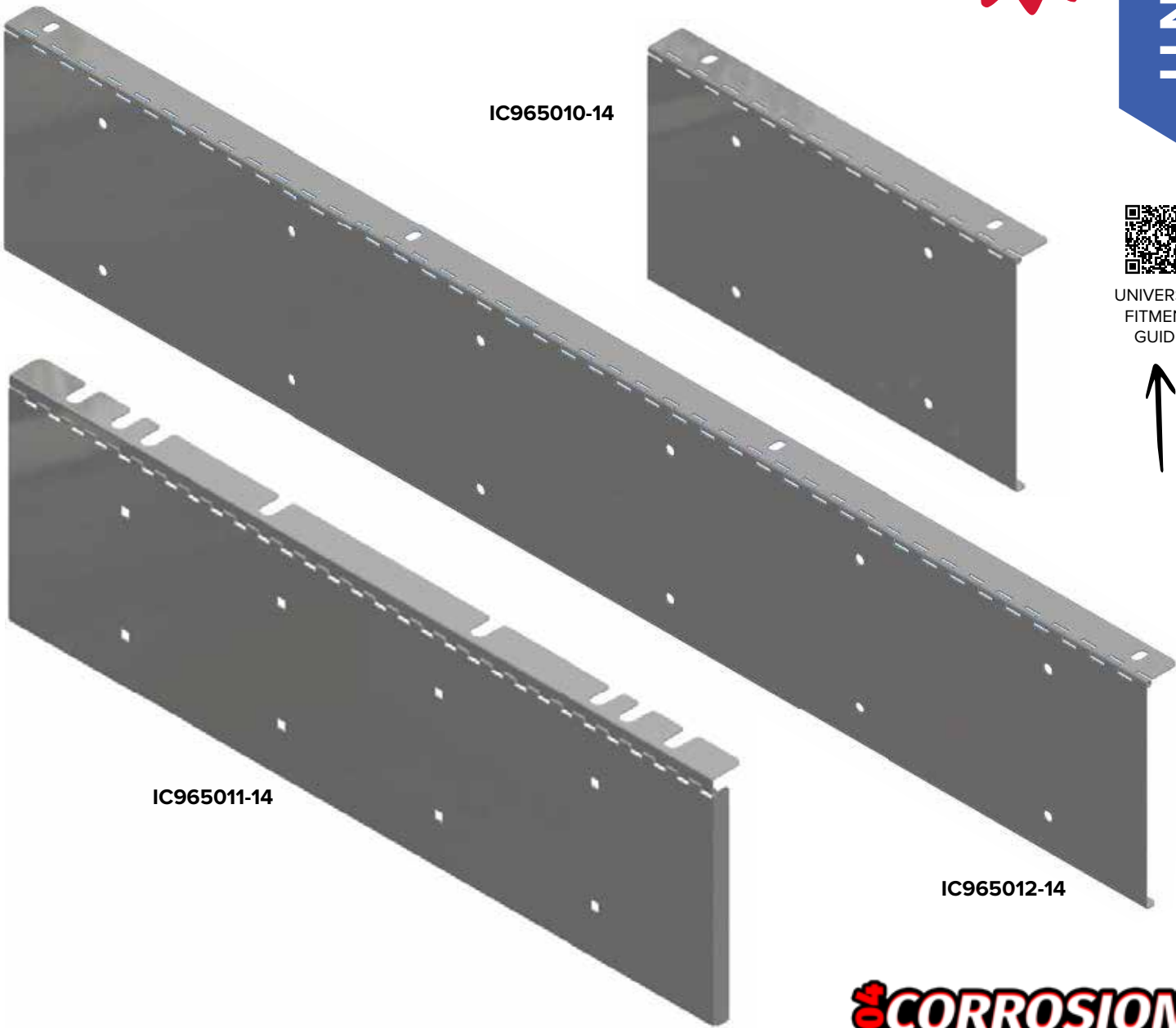
Part #	Product	Size	Information	Finish	Fitment
IC974003-14	Anti-Sails	12 in. W x 14 in. L	Sold in Pairs	#8 304 Polished Stainless Steel	See QR Code
IC974005-14	Anti-Sails	9 in. W x 7.5 in. L	Sold in Pairs	#8 304 Polished Stainless Steel	See QR Code
IC974004-14	Anti-Sails	11 in. W x 20 in. L	Sold in Pairs	#8 304 Polished Stainless Steel	See QR Code

LICENSE PLATE HOLDERS

Designed specifically for displaying your License Plate! Expertly crafted from 304 Corrosion Resistant #8 Non-Directional Stainless Steel, these will stand up against all the elements. Sold individually.



UNIVERSAL



UNIVERSAL
FITMENT
GUIDE



PRODUCT INFORMATION

Part #	Product	Information	Finish	Fitment
IC965010-14	License Plate Holder	Hinged Single Plate	#8 304 Polished Stainless Steel	See QR Code
IC965011-14	License Plate Holder	Hinged Double Plate with Tow Pin Cover	#8 304 Polished Stainless Steel	See QR Code
IC965012-14	License Plate Holder	Hinged Triple Plate	#8 304 Polished Stainless Steel	See QR Code

LIGHT BRACKETS

Universal Light Brackets for light installation anywhere! Iowa Customs Beacon Light Bracket, is expertly crafted from 304 Corrosion resistant #8 Finish Stainless Steel and adds another level of customization to your rig. Please refer to our fitment guide for correct fitment.



UNIVERSAL
FITMENT
GUIDE



304 CORROSION RESISTANT
304 Stainless Steel | Rust Free | Weather Proof

PRODUCT INFORMATION

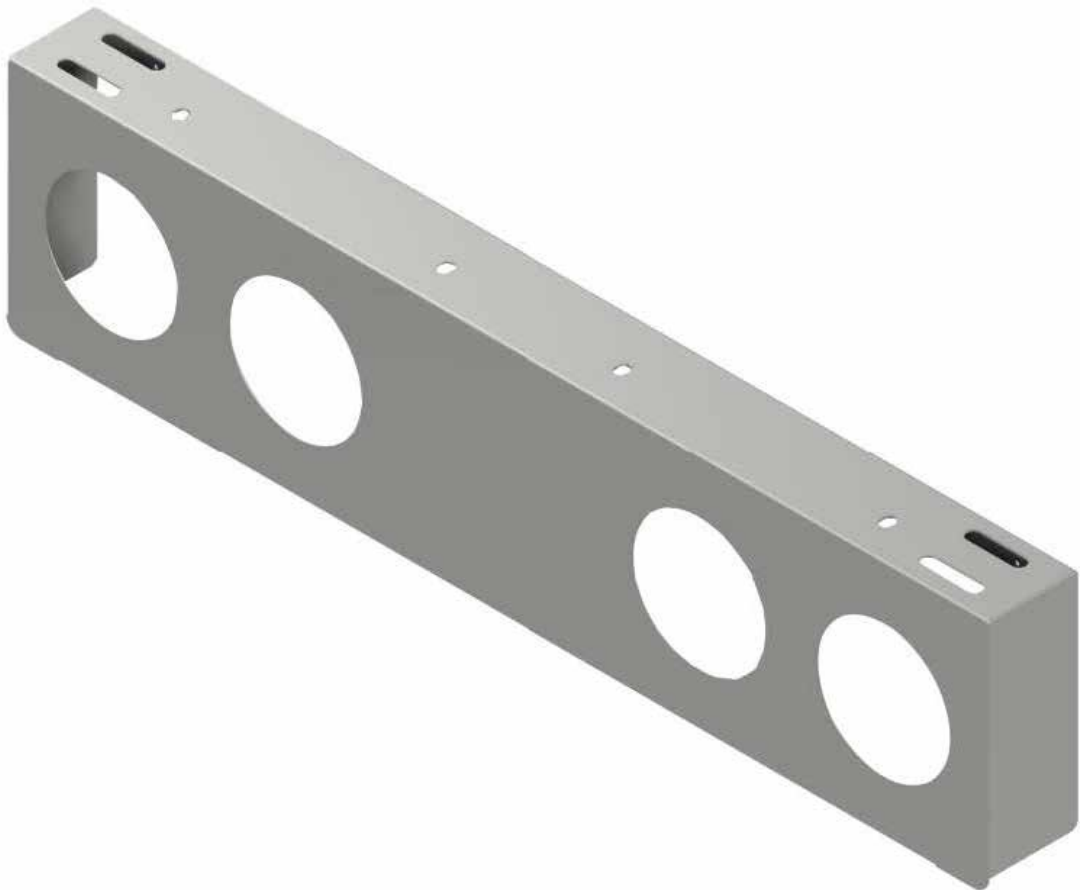
Part #	Product	Finish	Fitment
IC966050-14	Beacon Light Bracket	#8 304 Polished Stainless Steel	See QR Code

REAR CENTER PANELS

Rear Center Panel is exactly what you're looking for to customize your rigs exterior! Designed and crafted from 304 Corrosion Resistant #8 Non-Directional Stainless Steel, the Iowa Customs Rear Center Panels install in minutes and provides a great look. Additionally, there are multiple light hole configurations!



UNIVERSAL



UNIVERSAL
FITMENT
GUIDE



PRODUCT INFORMATION

Part #	Product	Size	Lights	Back Plate	Finish	Fitment
IC983100-14	Rear Center Light Panel	8 in. x 33.5 in.	(4) - 4 in. Light Holes	None	#8 304 Polished Stainless Steel	See QR Code



IFTA BRACKETS/ PERMIT HOLDERS



The 16GA 304 #8 304 Non-Directional Polished Stainless Steel IFTA Permit Holders provide the best way to display your permits. Adhesive Mounting for Universal applications and Flange Mounting Available!



UNIVERSAL
FITMENT
GUIDE



IC985007-14



IC985003-14



IC985009-14



IC985008-14



IC985002-14

**304 CORROSION
RESISTANT**
304 Stainless Steel | Rust Free | Weather Proof

PRODUCT INFORMATION

Part #	Holder Information	Mount Information	Finish	Fitment
IC985002-14	Universal Mount IFTA Permit Holder	4 in. x 4 in. Adhesive Mount	#8 304 Polished Stainless Steel	See QR Code
IC985003-14	Universal Mount IFTA Permit Holder	4 in. x 4 in. Bolt Mount	#8 304 Polished Stainless Steel	See QR Code
IC985007-14	Universal Mount IFTA Permit Holder	4 in. x 4 in. Hinged Permit Panel	#8 304 Polished Stainless Steel	See QR Code
IC985008-14	Universal Mount IFTA Permit Holder	5 in. x 12 in. Hinged Permit Panel	#8 304 Polished Stainless Steel	See QR Code
IC985009-14	Universal Mount IFTA Permit Holder	5 in. x 4 in. Hinged Permit Panel	#8 304 Polished Stainless Steel	See QR Code

HUB COVERS

Specifically designed for Dana Spicer Drive Axel Hub Covers, these Iowa Customs products are built to last. Designed and crafted from 304 Corrosion Resistant #8 Non-Directional Stainless Steel. Available in different hole configurations. Please refer to our fitment guide for correct fitment.



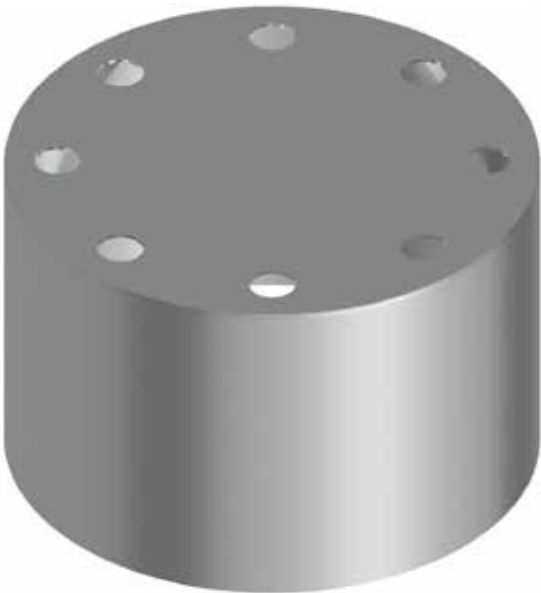
UNIVERSAL



IC982001-14



IC982002-14



IC982003-14



UNIVERSAL
FITMENT
GUIDE



PRODUCT INFORMATION

Fitment: Dana Spicer Hub Only

Part #	Product	Hole Shape	Cover Details	Finish
IC982001-14	Hub Cover	Round	(8) Axle Plastic Flat Top Push On Nut Cover - Sold Individually	#8 304 Polished Stainless Steel
IC982002-14	Hub Cover	Oval	(8) Axle Plastic Flat Top Push On Nut Cover - Sold Individually	#8 304 Polished Stainless Steel
IC982003-14	Hub Cover	Blank	(8) Axle Plastic Flat Top Push On Nut Cover - Sold Individually	#8 304 Polished Stainless Steel