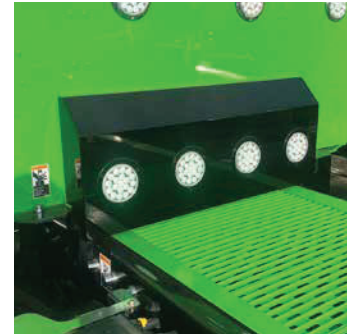


# SHOCK BOX COVERS



Part Number Example: IC172001-14 - Peterbilt 389 Shock Box Cover with (5) 4" Round Light Holes in 304 #8 Non-Directional Polished Stainless Steel Finish

TRUCK	PRODUCT FAMILY	PRODUCT NAME	FINISH
Peterbilt 389	1 Shock Box Covers	72	*304 #8 Non-Directional Polished Stainless Steel 14
	48"/52" & 63"/72" Sleeper - Round Top Design	(5) 4" Lights on Face Only	001 Smooth Aluminum / Paintable Finish 21
		(5) 4" Lights on Face and (7) 3/4" Lights on 45 Degree Flange	002
		(4) 4" Lights on Face Only	003
		(4) 4" Lights on Face and (7) 3/4" Lights on 45 Degree Flange	004
		(10) 3/4" Lights on Face Only	005
		(10) 3/4" Lights on Face and (7) 3/4" Lights on 45 Degree Flange	006
		(7) 3/4" Lights on 45 Degree Flange Only	007
		Blank with No Light Holes	008
	48"/52" & 63"/72" Sleeper - 45 Degree Top Design	No Holes	020
		(5) 4" Lights on Face	021
		(4) 4" Lights on Face	022
	48"/52" & 63"/72" Sleeper - Round Top Design	Center Recessed Blank with No Light Holes	015
		Center Recessed with (2) 4" Light Holes	016
		Center Recessed with (3) 4" Light Holes	017
		Center Recessed with (4) 4" Light Holes	018
	70"/78" Sleeper - Round Top Design	(5) 4" Lights on Face Only	041
		(5) 4" Lights on Face and (7) 3/4" Lights on 45 Degree Flange	042
		(4) 4" Lights on Face Only	043
		(4) 4" Lights on Face and (7) 3/4" Lights on 45 Degree Flange	044
		(10) 3/4" Lights on Face Only	045
		(10) 3/4" Lights on Face and (7) 3/4" Lights on 45 Degree Flange	046
		(7) 3/4" Lights on 45 Degree Flange Only	047
		Blank with No Light Holes	048
	70"/78" Sleeper - Round Top Design with Center Recessed	Blank with No Light Holes	055
		(2) 4" Light Holes	056
		(3) 4" Light Holes	057
		(4) 4" Light Hole	058
	70"/78" Sleeper - 45 Degree Top Design	No Holes	060
		(5) 4" Lights on Face	061
		(4) 4" Lights on Face	062

\* Stocked Finish

# SHOCK BOX COVERS

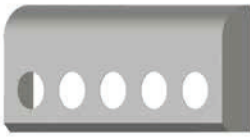
Iowa Customs Ghost Mount Internal structure is easily installed without drilling any holes or double sided tape. The paintable smooth aluminum or #8 304 Non-Directional Polished Stainless Steel box covers the sleeper shock suspension. Clean finished look when installed with our sleeper air bag covers.

## FITMENT:

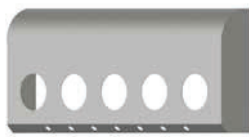
- Peterbilt  
 - 386 & 389

## FINISH & DESIGN:

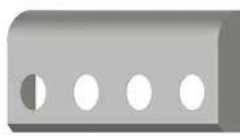
- Round Top Design - Smooth Aluminum / Paintable Finish
- 45 Degree Top Design - #8 304 Non-Directional Polished Stainless Steel



(5) - 4 inch light holes  
 IC172001-21



(5) - 4 inch light holes with 7 bullets  
 IC172002-21



(4) - 4 inch light holes  
 IC172003-21



(4) - 4 inch light holes with 7 bullets  
 IC172004-21



(10) 3/4" light holes on 45 degree face  
 IC172005-21



(7) 3/4" light holes on 45 degree face  
 IC172007-21



Blank  
 IC172020-14



Blank  
 IC172008-21



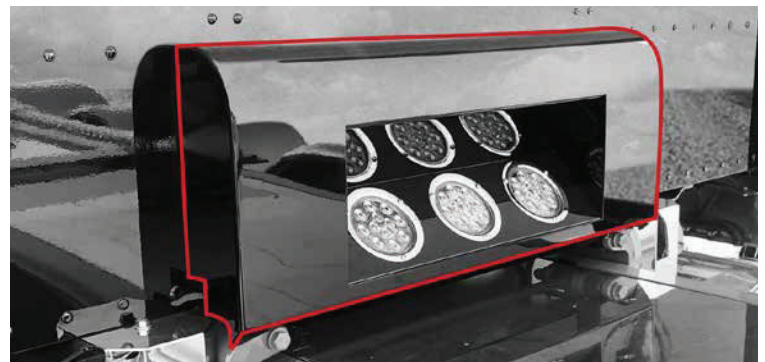
(4) - 4 inch light holes  
 IC172018-21



(5) - 4 inch light holes  
 IC172021-14



(4) - 4 inch light holes  
 IC172022-14



(3) - 4 inch light holes  
 IC172017-21

PETERBIT