

REVERSE T-BAR

Reverse T-Bars from Iowa Customs are expertly crafted and manufactured from 14GA #8 304 Non-Directional Polished Stainless Steel. Our T-Bars are engineered with internal structure to help eliminate fatigue areas. Includes Gasketed Rear Access Panel, Gussets and Integrated Flap Hangers.

FITMENT:

- Universal

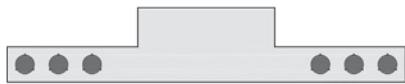
FINISH OPTIONS:

- #8 304 Non-Directional Polished Stainless Steel

FYI:

- Footprint: 96" Long x 18" Tall x 3"
- Lights not included
- Custom Light Configurations Available

AVAILABLE STOCK CONFIGURATIONS



Reverse T-Bar with (6) 4" Round Light Holes



Reverse T-Bar with (8) 4" Round Light Holes



Reverse T-Bar with (10) 4" Round Light Holes



Reverse T-Bar with (12) 4" Round Light Holes

NEW FOR 2022



Reverse T-Bar with (2) 4" and (28) 3/4" Round Light Holes



Reverse T-Bar with (4) 4" and (22) 3/4" Round Light Holes



Reverse T-Bar with (6) 4" and (16) 3/4" Round Light Holes



Part Number Example: IC975020-14 - Universal 96" x 18" Tall Reverse T-Bar with (13) 4" Round Light Holes in #8 304 Non-Directional Polished Stainless Steel Finish

MFG	PRODUCT FAMILY	PRODUCT NAME	FINISH
Universal	9 Reverse T-Bar	75 Reverse T-Bar with (12) 4" Round Light Holes - 18" Drop x 96" Long	020 * #8 304 Non-Directional Polished Stainless Steel 14
		Reverse T-Bar with (8) 4" Round Light Holes - 18" Drop x 96" Long	021
		Reverse T-Bar with (6) 4" Round Light Holes - 18" Drop x 96" Long	022
		Reverse T-Bar with (10) 4" Round Light Holes - 18" Drop x 96" Long	023
		Reverse T-Bar with (2) 4" and (28) 3/4" Round Light Holes - 18" Drop x 96" Long	025
		Reverse T-Bar with (4) 4" and (22) 3/4" Round Light Holes - 18" Drop x 96" Long	026
		Reverse T-Bar with (6) 4" and (16) 3/4" Round Light Holes - 18" Drop x 96" Long	027

* Stocked Finish