

IOWA CUSTOMS

SEMI TRUCK ACCESSORIES MANUFACTURER



2022 PRODUCT INFORMATION

Table of Contents

KENWORTH

Seat Base Adapter	1
Refrigerator Kits	2
Refrigerator & Microwave Kits	3

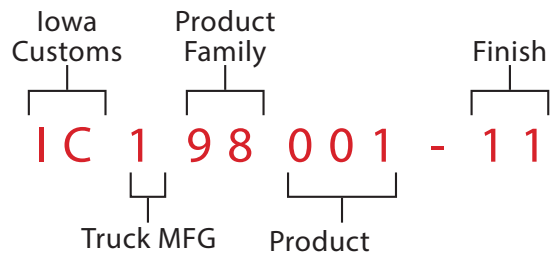
PETERBILT

Clutch Extender	4
IFTA Permit Holder	5
Grease Guards	6
Refrigerator & Microwave Kits	7
Refrigerator Kits	8
Storage Solutions	9
Seat Base Adapter	10
Cab & Cowl Panels	11
Sleeper Panels	12
Sleeper Air Bag Covers	13
Shock Box Covers	15
Tool & Boot Box Covers	16
Window Chops	17
Remote Lube Mount Bracket	18
Grills	19
Def Tank Accessories	20
OEM Front Flap Weight	21
Rear OEM Tail Light Bracket	21

UNIVERSAL

33" Light Bars	22
96" Light Bars	23
Deck Plate Accessories	24
Frame / Bumper Lights	26
Anti-Sails	27
Top Mud Flap Accents	27
Flap Weights	28
Glow Kits	30
Slide In Rail Deck Plate Accessories	31
In-Frame Deck Plates	32
Custom Deck Plates	33
On-Frame Sectionalized Deck Plates	34
On-Top Deck Plates	35
Reverse T-Bar	36
Rear T-Bar	37
Rear Center Panels	38
Watermelon Light Adapter Kit	39
Step Plates & Inserts	40
Storage Solutions	42
Microwave & Inverter Kits	43
IFTA Permit Holder	44

HOW TO ORDER:



Every product and option combination has an associated number which must be referenced when placing an order. Obtain all above numbers from the tables located in the corresponding product pages of this guide. Each custom product also has its own unique part number.

Call your approved Iowa Customs Dealer to place your order. Have Technical Questions? Give us a call!



Iowa Customs offers an industry leading 48 - hour Quick Ship program on many of our products. Look for this logo to see if this is a part of this great program.

SEAT BASE ADAPTERS

Our patented Seat Base Adapters are your solution for added leg room and adapting after-market or OEM seats without drilling holes into your floor!

Each Seat Base Adapter is manufactured to match your specific brand of seat making installation simple. Adapters come with all mounting hardware included!



FITMENT:

- Kenworth W9

FINISH OPTIONS:

- Billet Aluminum
- Chrome
- Powder Coat Finish
 - Black
 - Red Baron
 - Crystal White
 - PO Blue

Part Number Example: IC-299001-11 - Kenworth Seat Base Adapter for OEM/National & Knoedler Seat in Billet Aluminum Finish

TRUCK MFG	PRODUCT FAMILY		PRODUCT NAME			FINISH	
Kenworth	2	Seat Base Adapter	99	8" OEM / National & Knoedler	001	* Billet Aluminum	11
				10" Bostrom Wide Ride/ Seats Inc Legacy Lo - Pre July 1, 2018	002	* Chrome	12
				10" Seats Inc Legacy Gold / Silver	003	* Gloss Black	15
				10" National Seating Series 2000 Ultra Ride	006	Red Baron	16
				12" Sears Atlas	004	Crystal White	17
				12" Seats Inc. - Legacy Lo- Post July 1, 2018	008	PO Blue	18
				14" National Lo Profile Seat Base	005		

* Stocked Finish

REFRIGERATOR KITS

Our patented Refrigerator Kits offer storage solutions and the ability to simply install convenience into your Kenworth!

All storage units feature a one-piece drawer system ensuring the bottoms will never fall out. The ball bearing slides use Stay Closed Technology, which means the drawers will never open while driving down the road!



KENWORTH FITMENT:

- W9 62" Aero Cab Only

FINISH OPTIONS:

- Brushed Stainless Steel
- Gloss Black

KIT INCLUDES THE FOLLOWING:

- Refrigerator: 1.8 Cu. Ft - Black Finish - 12 v 3.2 Amp No inverter needed.
- W9 Refrigerator & Storage Kit Includes: Refrigerator, 4 - Drawer System and Trim Kit
- Optional brushed stainless steel front available.



Part Number Example: IC284005-13 - Kenworth Refrigerator Kit with 4-Drawer Storage - Passenger Side Installation in Brushed Stainless Steel Finish

TRUCK MFG	PRODUCT FAMILY	PRODUCT NAME	FINISH				
Kenworth	2	Refrigerator Kit	84	Kenworth W9 Refrigerator Kit with 4 Drawer Storage - Passenger Side Installation	005	* Brushed Stainless Steel	13
						* Gloss Black	15

* Stocked Finish

REFRIGERATOR & MICROWAVE KITS

Our patented Refrigerator & Microwave Kits offer the conveniences of home while saving valuable time and money while on the road.

All storage units feature a one-piece drawer system ensuring the bottoms will never fall out. The ball bearing slides use Stay Closed Technology, which means the drawers will never open while driving down the road!



Kenworth W9 Installation



Inverter Installation Kit

KENWORTH FITMENT:

- W9 62" Aero Cab Only

FINISH OPTIONS:

- Brushed Stainless Steel
- Gloss Black

FYI:

- Includes Inverter Installation Kit (See Photo)
- Microwave: 750w 0.5 cu. ft. 120v - Black Finish - Must run with the included inverter.
- Refrigerator: 1.8 Cu. Ft - Black Finish - 12 v 3.2 Amp No inverter needed.
- W9 Refrigerator & Microwave Kit Includes: Refrigerator, Microwave, Inverter and Install Kit 2-Drawer System and Trim kit
- Optional brushed stainless steel front available.



Part Number Example: IC284006-13 - Kenworth Refrigerator/Microwave Kit in Brushed Stainless Steel Finish

TRUCK MFG		PRODUCT FAMILY		PRODUCT NAME		FINISH	
Kenworth	2	Refrigerator Kit	84	Kenworth W9 Refrigerator Kit with Microwave, Inverter, Inverter Installation Kit and 2-Drawer Storage - Passenger Side Installation	006	* Brushed Stainless Steel	13
						* Gloss Black	15

* Stocked Finish

KENWORTH

CLUTCH EXTENDER

The patented Clutch Pedal Extender changes the position and increases the angle of the foot in relation to the floor for less strain on the ankle, thereby improving driver ergonomics.

BEFORE



AFTER



FITMENT:

- Peterbilt 379
- Peterbilt 386
- Peterbilt 389

FINISH OPTIONS:

- Billet Aluminum
- Chrome



Part Number Example: IC198001-11 - 2" Clutch Pedal Extender - Billet Aluminum Finish

TRUCK MFG		PRODUCT FAMILY		PRODUCT NAME			FINISH	
Peterbilt	1	Clutch Pedal Extender	98	2" Clutch Pedal Extender	001	* Billet Aluminum	11	
						* Chrome	12	

* Stocked Finish

IFTA PERMIT HOLDER

The #8 304 Non-Directional Polished Stainless Steel IFTA Permit Holders provide a Non-Adhesive way to display your permits. For use with after-market angled exhaust clamps or sleeper mount see fitment.

FITMENT:

- Peterbilt 379
- Peterbilt 389
- Peterbilt 579

FINISH OPTIONS:

- #8 304 Non-Directional Polished Stainless Steel

FYI:

- Mounts using existing hardware
- Use with angle clamps only
- 579 sleeper mount



Angle Clamp Mounted



Peterbilt 579 Cab Mount



Angle Clamp Mounted



IC185001-14
16GA



IC185005-14
14 GA



Part Number Example: IC185001-14 - Peterbilt IFTA Brackets - 1-Permit for Angle Exhaust Clamp Mounting in #8 304 Non-Directional Polished Stainless Steel

TRUCK MFG		PRODUCT FAMILY	PRODUCT NAME	FINISH
Peterbilt	1	IFTA Brackets	85	*#8 304 Non-Directional Polished Stainless Steel 14
		Peterbilt 379, 386 & 389 IFTA Brackets - Sold As A Pair	1-Permit - Angle Exhaust Clamp Mounted	001
			2-Permit - Angle Exhaust Clamp Mounted	002
		Peterbilt 579 IFTA Brackets - Sold As A Pair	1-Permit - Cab Mounted	003
			2-Permit - Cab Mounted	004
		Peterbilt 379, 386 & 389 IFTA Brackets - Sold As A Pair	1-Permit - Angel Exhaust Clamp Mounted - Slim Series	005

* Stocked Finish

GREASE GUARDS

This patented Grease Guard System prevents unwanted u-joint grease from splattering the underside of your rig. Expertly crafted from Aluminum and Brushed Stainless Steel.



FITMENT:

- Peterbilt 386
- Peterbilt 389

FINISH OPTIONS:

- Brackets are finished black powder coat.

FYI:

- Complete kits include guards for the hanger bearings and the front side of both rear axles.
- Fits Following Suspensions
 - Flex Air
 - Low Air Leaf
- Does Not Fit Low Low Air Leaf Suspensions



Part Number Example: IC186999-15 - Peterbilt Grease Guard Complete Hanger and Drive Axle Kit for 280"-292" Wheel Base in Gloss Black Finish

TRUCK MFG		PRODUCT FAMILY		PRODUCT NAME		FINISH	
Peterbilt	1	Grease Guards	86	Complete Hanger Bearing and Drive Axle Kit for 280" - 292" Wheel Base	999	*Gloss Black	15
				Complete Hanger Bearing Kit for 280" - 292" Wheel Base	001		
				Complete Hanger Bearing and Drive Axle Kit for 292"-315" Wheel Base	995		
				Complete Hanger Bearing Kit for 292" - 315" Wheel Base	996		
				Rear Drive Axle Kit for 280" - 315" Wheel Base	997		

* Stocked Finish

REFRIGERATOR & MICROWAVE KITS



PETERBILT FITMENT:

- 379 - 63" Sleeper Only
- 386 - 63" / 72" Sleeper
- 389 - 63" / 72" Sleeper
- Call for Other Sleeper Fitments

FINISH OPTIONS:

- Brushed Stainless Steel
- Gloss Black

FYI:

- Peterbilt 379, 386, & 389 Refrigerator and Microwave Kits Include: Refrigerator, Microwave, Inverter, Inverter Installation Kit, 1-Drawer Storage Unit, Trim Kit and Hardware
- Microwave: 750w 0.5 cu. ft. 120v - Black Finish - Must run with the included inverter.
- Refrigerator: 1.8 Cu. Ft - Black Finish - 12 v 3.2 Amp No inverter needed.
- Optional brushed stainless steel front available.



Part Number Example: IC184009-13 - Peterbilt 379 Refrigerator/Microwave Kit for Passenger Side Installation in Brushed Stainless Steel Finish

TRUCK MFG	PRODUCT FAMILY	PRODUCT NAME	FINISH				
Peterbilt	1	Refrigerator Kit	84	Peterbilt 379 Refrigerator, & Microwave, Inverter Kit for Passenger Side Installation	009	* Brushed Stainless Steel	13
				Peterbilt 389 2008-2015 Refrigerator, & Microwave, Inverter Kit for Passenger Side Installation	010	* Gloss Black	15
				Peterbilt 389 2016+ Refrigerator, & Microwave, Inverter Kit for Passenger Side Installation	011		
				Peterbilt 379, 386 & 389 Refrigerator, & Microwave, Inverter Kit, for Drivers Side Installation	015		

* Stocked Finish

REFRIGERATOR KITS

Our patented Refrigerator Kits offer storage solutions and the ability to simply install convenience into your Peterbilt!

All storage units feature a one-piece drawer system ensuring the bottoms will never fall out. The ball bearing slides use Stay Closed Technology, which means the drawers will never open while driving down the road!



PETERBILT FITMENT:

- 379 - 63" Sleeper Only
- 386 - 63" / 72" Sleeper
- 389 - 63" / 72" Sleeper
- Call for Other Sleeper Fitments

FINISH OPTIONS:

- Brushed Stainless Steel
- Gloss Black

FYI:

- Peterbilt 379, 386 & 389 Refrigerator Kit Includes: Refrigerator, 3-Drawer System and Trim Kit
- Refrigerator: 1.8 Cu. Ft - Black Finish - 12 v 3.2 Amp No inverter needed.
- Optional brushed stainless steel front available.



Part Number Example: IC184001-13 - Peterbilt 379, 386 & 389 Refrigerator Kit for Drivers Side Installation in Brushed Stainless Steel Finish

TRUCK MFG		PRODUCT FAMILY		PRODUCT NAME		FINISH	
Peterbilt	1	Refrigerator Kit	84	Peterbilt 379, 386 & 389 Refrigerator Kit for Drivers Side Installation	001	* Brushed Stainless Steel	13
				Peterbilt 379 Refrigerator Kit for Passenger Side Installation	002	* Gloss Black	15
				Peterbilt 389 2008-2015 Refrigerator Kit for Passenger Side Installation	003		
				Peterbilt 389 2016+ Refrigerator Kit for Passenger Side Installation	004		
				Peterbilt 389 Refrigerator Kit for Drivers Side Installation - 70"/78" Ultra Sleeper	020		

* Stocked Finish

STORAGE SOLUTIONS

Our Peterbilt Storage Kits are ideal for keeping your truck organized. Our 5 drawer kit includes 38" storage solution with an open shelf option above and a trim kit to give it the finished look. The Table Top Option is only offered in the 5 drawer unit. All units feature 1-piece drawers, so the bottoms never fall out and ball bearing slides with "Stay-Closed" technology, so the drawers will never open while going down the road!

PETERBILT FITMENT:

- 379 (Both D&P Side)
- 386
- 389 (D Side Only)

FINISH OPTIONS:

- Brushed Stainless Steel
- Gloss Black



Table top optional w/5 drawers



Part Number Example: IC190017-13 - Peterbilt 5-Drawer Storage Kit for 379, 386 & 389 Drivers Side Installation in Brushed Stainless Steel Finish

TRUCK MFG		PRODUCT FAMILY		PRODUCT NAME		FINISH	
Peterbilt	1	Storage Solutions & Kits	90	5-Drawer Storage Kit with Top Shelf - 14"W x 38"T - 379, 386 & 389 Drivers Side Installation	017	* Brushed Stainless Steel	13
				5-Drawer Storage Kit with Top Shelf - 14"W x 38"T - 379 Passenger Side Installation	018	* Gloss Black	15
				5-Drawer Storage Kit with Table Top and Top Shelf - 14"W x 38"T - 379, 386 & 389 Drivers Side Installation	019		
				5-Drawer Storage Kit with Table Top and Top Shelf - 14"W x 38"T - 379 Passenger Side Installation	020		
				5 Drawer Storage Kit with Top Shelf - 70/78" Ultra Sleeper 14"W x 38"T 379, 386 & 389 Drivers Side Installation	021		
				5 Drawer Storage Kit - 70/78" Ultra Sleeper - 14"W x 38"T 379, 386 & 389 Passenger Side Installation	022		
				5 Drawer Storage Kit with Table Top and Top Shelf - 70/78" Ultra Sleeper 14"W x 38"T - 379, 386 & 389 Drivers Side Installation	023		
				5 Drawer Storage Kit with Table Top - 70/78" Ultra Sleeper 14"W x 38"T 379, 386 & 389 Passenger Side Installation	024		

* Stocked Finish

SEAT BASE ADAPTERS

Our patented Seat Base Adapters are your solution for added leg room and adapting after-market or OEM seats without drilling added holes into your floor! Each Seat Base Adapter is manufactured to match your specific brand of seat making installation simple. Adapters come with all mounting hardware included!

FITMENT:

- Peterbilt
 - 379, 386, 389 & 579's

FINISH OPTIONS:

- Billet Aluminum
- Chrome
- Powder Coat Finish
 - Black
 - Red Baron
 - Crystal White
 - PO Blue



Part Number Example: IC199001-11 - Peterbilt Seat Base Adaptor for OEM/National & Knoedler Seat in Billet Aluminum Finish

TRUCK MFG		PRODUCT FAMILY		PRODUCT NAME		FINISH	
Peterbilt	1	Seat Base Adapter	99	8" OEM / National & Knoedler	001	* Billet Aluminum	11
				10" Bostrom Wide Ride - - Seats Inc Legacy LoPro (Seat Build Date Pre - July 1, 2018)	002	* Chrome	12
				10" Seats Inc Legacy Gold / Silver	003	* Gloss Black	15
				10" National Seating Series 2000 Ultra Ride	006	Red Baron	16
				12" Sears Atlas	004	Crystal White	17
				12" Seats Inc Legacy LoPro (Seat Build Date Post-July 1, 2018)	008	PO Blue	18
				12" Seats Inc. Legacy Gold/Silver Series for Peterbilt 579	010		
				12" Seats Inc. Legacy Lo for Peterbilt 579 (Seat with Post July 1, 2018 Build Date)	011		
				12" Sears Atlas for Peterbilt 579	012		
				12" Seats Inc. Legacy Lo for Peterbilt 579 (Seat with Pre July 1, 2018 Build Date)	013		
				14" National Lo Profile Seat Base	005		

* Stocked Finish



CAB & COWL PANELS

Peterbilt 389 Cab & Cowl Panels are expertly crafted from #8 304 Stainless Steel and feature 2-Into-1 Bend. Patented mounting system allows for easy installation. Available in 3-1/2", 4-1/2" and 5-1/2" Drops with 3/4" Light Holes located on bottom edge of all Cab & Cowl Panels. Custom Light and Drop Designs Available. Need Lights: Order our All-In-One Light Kit. Kit includes lights and wire harness for ease of installation.



FITMENT: - 389

FINISH OPTIONS:

- #8 304 Non-Directional Polished Stainless Steel

FYI:

- Each Cab/Cowl Set has 3/4" Holes on Bottom Flange

LIGHT OPTIONS:

- Add -XX to end of part number for desired light color:
- 97 - Amber Lens / Amber LED Light Kit
- 96 - Clear Lens / Amber LED Light Kit
- 95 - Red Lens / Red LED
- 94 - Clear Lens / Red LED
- 93 - Dual Revolution - Amber/Blue
- 92 - Dual Revolution - Amber/Green
- 91 - Dual Revolution - Amber/Purple
- 90 - Dual Revolution - Amber/Red
- 89 - Dual Revolution - Amber/White
- 88 - Dual Revolution - Red/Blue
- 87 - Dual Revolution - Red/Green
- 86 - Dual Revolution - Red/Purple
- 85 - Dual Revolution - Red/White

Part Number Example: IC171001-14 - With Light Kit: IC171001-14-97

MFG	PRODUCT FAMILY		PRODUCT NAME		FINISH	
Peterbilt	1	Cab & Cowl Panels	71		*304 #8 Polished Stainless Steel	14
		389 Glider & DEF with Horizontal Exhaust		Full Wrap - 3-1/2" Tall - (46) 3/4" Light Holes on Bottom Flange	001	
				Full Wrap - 4-1/2" Tall - (46) 3/4" Light Holes on Bottom Flange	002	
				Full Wrap - 5-1/2" Tall - (44) 3/4" Light Holes on Bottom Flange	003	
		389 Glider with Stock Cowls		Straight Cut - 3-1/2" Tall with (28) 3/4" Light Holes on Bottom Flange	015	
				Straight Cut - 4-1/2" Tall with (28) 3/4" Light Holes on Bottom Flange	016	
				Straight Cut - 5-1/2" Tall with (28) 3/4" Light Holes on Bottom Flange	017	
		2015-2017 389 DEF with Conventional Exhaust		Straight Cut - 3-1/2" Tall with (42) 3/4" Light Holes on Bottom Flange	020	
				Straight Cut - 4-1/2" Tall with (42) 3/4" Light Holes on Bottom Flange	021	
				Straight Cut - 5-1/2" Tall with (41) 3/4" Light Holes on Bottom Flange	022	
		2015-2017 389 DEF with Horizontal or Conventional Exhaust with Stock Cowls		Straight Cut - 3-1/2" Tall with (28) 3/4" Light Holes on Bottom Flange	025	
				Straight Cut - 4-1/2" Tall with (28) 3/4" Light Holes on Bottom Flange	026	
				Straight Cut - 5-1/2" Tall with (28) 3/4" Light Holes on Bottom Flange	027	
		2015-2017 389 DEF with Aftermarket Exhaust and Box Forward Position		Full Wrap - 3-1/2" Tall with (46) 3/4" Light Holes on Bottom Flange	029	
				Full Wrap - 4-1/2" Tall with (46) 3/4" Light Holes on Bottom Flange	030	
				Full Wrap - 5-1/2" Tall with (45) 3/4" Light Holes on Bottom Flange	031	
		2018 & Newer 389 DEF with Conventional Exhaust		Straight Cut - 3-1/2" Tall with (42) 3/4" Light Holes on Bottom Flange	070	
				Straight Cut - 4-1/2" Tall with (42) 3/4" Light Holes on Bottom Flange	071	
				Straight Cut - 5-1/2" Tall with (41) 3/4" Light Holes on Bottom Flange	072	
		2018 & Newer DEF with Horizontal or Conventional Exhaust with Stock Cowls		Straight Cut - 3-1/2" Tall with (28) 3/4" Light Holes on Bottom Flange	075	
				Straight Cut - 4-1/2" Tall with (28) 3/4" Light Holes on Bottom Flange	076	
				Straight Cut - 5-1/2" Tall with (28) 3/4" Light Holes on Bottom Flange	077	
		2018 & Newer 389 DEF with Aftermarket Exhaust and Box Forward Position		Full Wrap - 3-1/2" Tall with (46) 3/4" Light Holes on Bottom Flange	079	
				Full Wrap - 4-1/2" Tall with (46) 3/4" Light Holes on Bottom Flange	080	
				Full Wrap - 5-1/2" Tall with (45) 3/4" Light Holes on Bottom Flange	081	

* Stocked Finish

SLEEPER PANELS



Peterbilt 389 Sleeper Panels are expertly crafted from #8 304 Stainless Steel. Our Patented Mounting System allows for easy installation. Available in 3-1/2", 4-1/2" and 5-1/2" Drops with 3/4" Light Holes located on bottom edge of all sleeper panels. Custom Light and Drop Designs Available. Need Lights: Order our All-In-One Light Kit which includes the lights and wire harness.

LIGHT OPTIONS:

- Add -XX to end of part number for desired light color:
- 97 - Amber Lens / Amber LED Light Kit
- 96 - Clear Lens / Amber LED Light Kit
- 95 - Red Lens / Red LED
- 94 - Clear Lens / Red LED
- 93 - Dual Revolution - Amber/Blue
- 92 - Dual Revolution - Amber/Green
- 91 - Dual Revolution - Amber/Purple
- 90 - Dual Revolution - Amber/Red
- 89 - Dual Revolution - Amber/White
- 88 - Dual Revolution - Red/Blue
- 87 - Dual Revolution - Red/Green
- 86 - Dual Revolution - Red/Purple
- 85 - Dual Revolution - Red/White



FITMENT: - 36/44" - 63/72"
- 48/58" - 70/78"

FINISH OPTIONS: - #8 304 Non-Directional Polished Stainless Steel

Part Number Example: IC170001-14 - With Light Kit: IC170001-14-97

MFG		PRODUCT FAMILY		PRODUCT NAME		FINISH	
Peterbilt	1	Sleeper Panels	70			*304 #8 Polished Stainless Steel	14
		Full Wrap - Stock Exhaust		63"/72" Sleeper - 3-1/2" Drop - (46) 3/4" Light Holes on Bottom Flange	001		
				63"/72" Sleeper - 4-1/2" Drop - (44) 3/4" Light Holes on Bottom Flange	003		
				63"/72" Sleeper - 5-1/2" Drop - (44) 3/4" Light Holes on Bottom Flange	005		
		Full Wrap - Aftermarket Exhaust		63"/72" Sleeper - 3-1/2" Drop - (50) 3/4" Light Holes on Bottom Flange	007		
				63"/72" Sleeper - 4-1/2" Drop - (48) 3/4" Light Holes on Bottom Flange	009		
				63"/72" Sleeper - 5-1/2" Drop - (48) 3/4" Light Holes on Bottom Flange	011		
		Full Wrap - Stock Exhaust		48"/58" Sleeper - 3-1/2" Drop - (34) 3/4" Light Holes on Bottom Flange	020		
				48"/58" Sleeper - 4-1/2" Drop - (34) 3/4" Light Holes on Bottom Flange	022		
				48"/58" Sleeper - 5-1/2" Drop - (34) 3/4" Light Holes on Bottom Flange	024		
		Full Wrap - Aftermarket Exhaust		48"/58" Sleeper - 3-1/2" Drop - (38) 3/4" Light Holes on Bottom Flange	026		
				48"/58" Sleeper - 4-1/2" Drop - (38) 3/4" Light Holes on Bottom Flange	028		
				48"/58" Sleeper - 5-1/2" Drop - (38) 3/4" Light Holes on Bottom Flange	030		
		Full Wrap - Stock Exhaust		36"/44" Sleeper - 3-1/2" Drop - (28) 3/4" Light Holes on Bottom Flange	040		
				36"/44" Sleeper - 4-1/2" Drop - (28) 3/4" Light Holes on Bottom Flange	042		
				36"/44" Sleeper - 5-1/2" Drop - (28) 3/4" Light Holes on Bottom Flange	044		
		Full Wrap - Aftermarket Exhaust		36"/44" Sleeper - 3-1/2" Drop - (35) 3/4" Light Holes on Bottom Flange	046		
				36"/44" Sleeper - 4-1/2" Drop - (35) 3/4" Light Holes on Bottom Flange	048		
				36"/44" Sleeper - 5-1/2" Drop - (35) 3/4" Light Holes on Bottom Flange	050		
		Front Wrap - Stock Exhaust		70"/78" Sleeper - 2" Extensions - 3-1/2" Drop - (46) 3/4" Light Holes on Bottom Flange	060		
				70"/78" Sleeper - 2" Extensions - 4-1/2" Drop - (46) 3/4" Light Holes on Bottom Flange	062		
				70"/78" Sleeper - 2" Extensions - 5-1/2" Drop - (46) 3/4" Light Holes on Bottom Flange	064		
		Front Wrap - Aftermarket Exhaust		70"/78" Sleeper - 2" Extensions - 3-1/2" Drop - (50) 3/4" Light Holes on Bottom Flange	066		
				70"/78" Sleeper - 2" Extensions - 4-1/2" Drop - (50) 3/4" Light Holes on Bottom Flange	068		
				70"/78" Sleeper - 2" Extensions - 5-1/2" Drop - (50) 3/4" Light Holes on Bottom Flange	070		
		Front Wrap - Stock Exhaust		70"/78" Sleeper - 12" Extensions - 3-1/2" Drop - (46) 3/4" Light Holes on Bottom Flange	080		
				70"/78" Sleeper - 12" Extensions - 4-1/2" Drop - (46) 3/4" Light Holes on Bottom Flange	082		
				70"/78" Sleeper - 12" Extensions - 5-1/2" Drop - (46) 3/4" Light Holes on Bottom Flange	084		
		Front Wrap - Aftermarket Exhaust		70"/78" Sleeper - 12" Extensions - 3-1/2" Drop - (50) 3/4" Light Holes on Bottom Flange	086		
				70"/78" Sleeper - 12" Extensions - 4-1/2" Drop - (50) 3/4" Light Holes on Bottom Flange	088		
				70"/78" Sleeper - 12" Extensions - 5-1/2" Drop - (50) 3/4" Light Holes on Bottom Flange	090		

* Stocked Finish

SLEEPER AIR BAG COVERS

Iowa Customs Sleeper Air Bag Covers are specifically designed to cover up the air bags on your sleeper!



Formed Air Bag Cover
(Polished Stainless Steel)



FITMENT:

- Peterbilt 389

FINISH OPTIONS:

- #8 304 Non-Directional Polished Stainless Steel
- Paintable Finish



Part Number Example: IC181001-14 - Peterbilt Air Bag Covers for 386 & 389 48"/52" or 63"/72" Sleeper in #8 304 Non-Directional Polished Stainless Steel

TRUCK MFG	PRODUCT FAMILY		PRODUCT NAME	FINISH		
Peterbilt	1	Air Bag Covers	81 Peterbilt 386 & 389 48"/52" and 63"/72" Sleeper Formed Air Bag Cover - Sold As Pair	001	* Paintable Finish	21
			Peterbilt 389 with 70"/78" Sleeper Air Bag Cover - Sold as Pair	003	#8 304 Non-Directional Polished Stainless Steel	14

* Stocked Finish

SHOCK BOX COVERS



Part Number Example: IC172001-14 - Peterbilt 389 Shock Box Cover with (5) 4" Round Light Holes in 304 #8 Non-Directional Polished Stainless Steel Finish

TRUCK	PRODUCT FAMILY	PRODUCT NAME	FINISH
Peterbilt 389	1 Shock Box Covers	72	*304 #8 Non-Directional Polished Stainless Steel 14
	48"/52" & 63"/72" Sleeper - Round Top Design	(5) 4" Lights on Face Only	001 Smooth Aluminum / Paintable Finish 21
		(5) 4" Lights on Face and (7) 3/4" Lights on 45 Degree Flange	002
		(4) 4" Lights on Face Only	003
		(4) 4" Lights on Face and (7) 3/4" Lights on 45 Degree Flange	004
		(10) 3/4" Lights on Face Only	005
		(10) 3/4" Lights on Face and (7) 3/4" Lights on 45 Degree Flange	006
		(7) 3/4" Lights on 45 Degree Flange Only	007
		Blank with No Light Holes	008
	48"/52" & 63"/72" Sleeper - 45 Degree Top Design	No Holes	020
		(5) 4" Lights on Face	021
		(4) 4" Lights on Face	022
	48"/52" & 63"/72" Sleeper - Round Top Design	Center Recessed Blank with No Light Holes	015
		Center Recessed with (2) 4" Light Holes	016
		Center Recessed with (3) 4" Light Holes	017
		Center Recessed with (4) 4" Light Holes	018
	70"/78" Sleeper - Round Top Design	(5) 4" Lights on Face Only	041
		(5) 4" Lights on Face and (7) 3/4" Lights on 45 Degree Flange	042
		(4) 4" Lights on Face Only	043
		(4) 4" Lights on Face and (7) 3/4" Lights on 45 Degree Flange	044
		(10) 3/4" Lights on Face Only	045
		(10) 3/4" Lights on Face and (7) 3/4" Lights on 45 Degree Flange	046
		(7) 3/4" Lights on 45 Degree Flange Only	047
	Blank with No Light Holes	048	
	70"/78" Sleeper - Round Top Design with Center Recessed	Blank with No Light Holes	055
		(2) 4" Light Holes	056
		(3) 4" Light Holes	057
		(4) 4" Light Hole	058
	70"/78" Sleeper - 45 Degree Top Design	No Holes	060
		(5) 4" Lights on Face	061
		(4) 4" Lights on Face	062

* Stocked Finish

SHOCK BOX COVERS

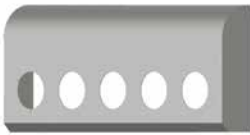
Iowa Customs Ghost Mount Internal structure is easily installed without drilling any holes or double sided tape. The paintable smooth aluminum or #8 304 Non-Directional Polished Stainless Steel box covers the sleeper shock suspension. Clean finished look when installed with our sleeper air bag covers.

FITMENT:

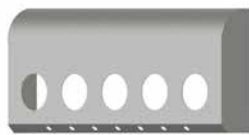
- Peterbilt
 - 386 & 389

FINISH & DESIGN:

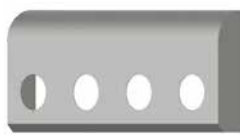
- Round Top Design - Smooth Aluminum / Paintable Finish
- 45 Degree Top Design - #8 304 Non-Directional Polished Stainless Steel



(5) - 4 inch light holes
 IC172001-21



(5) - 4 inch light holes with 7 bullets
 IC172002-21



(4) - 4 inch light holes
 IC172003-21



(4) - 4 inch light holes with 7 bullets
 IC172004-21



(10) 3/4" light holes on 45 degree face
 IC172005-21



(7) 3/4" light holes on 45 degree face
 IC172007-21



Blank
 IC172020-14



Blank
 IC172008-21



(4) - 4 inch light holes
 IC172018-21



(5) - 4 inch light holes
 IC172021-14



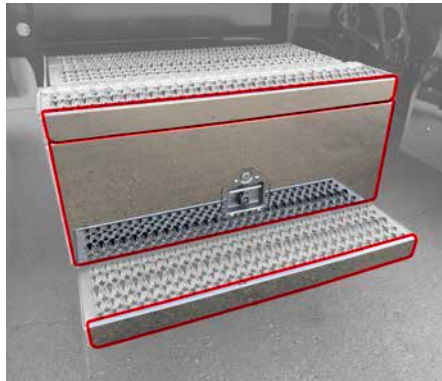
(4) - 4 inch light holes
 IC172022-14



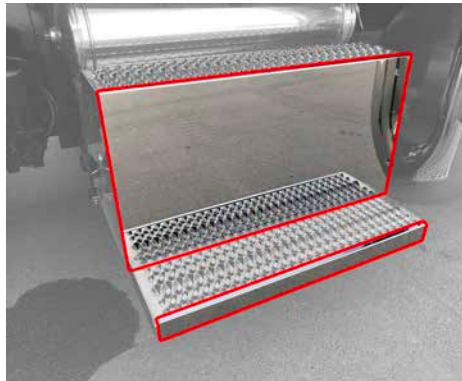
(3) - 4 inch light holes
 IC172017-21

TOOL & BOOT BOX COVERS

Iowa Customs 18GA #8 304 Non-Directional Polished Stainless Steel Boot Box Covers are expertly manufactured to create a superior fit. Four Configurations Available - Peterbilt Battery Box, Tool/Boot Box, 2015-2017 and 2018+ DPF Step Box Center Panels.



Tool/Boot Box Kit



Battery Box Combo Step Kit



FITMENT:

- Peterbilt 379
- Peterbilt 389
- Peterbilt 389 Glider

FINISH OPTIONS:

- #8 304 Non-Directional Polished Stainless Steel

FYI:

- Battery Box: (1) Bottom Step Trim & (1) Center Panel Which Extends to Top Step.
- Tool/Boot Box- (2) Step Trim & (1) Center panel with Handle Cutout
- 2015 - 2017 & DPF Center Panels & (1) Bottom Step Trim
- 2018 & Newer DPF Panel & (1) Bottom Step Trim

Part Number Example: IC173001-14 - Peterbilt Tool, Boot & Batter Box Cover for 379/389 in #8 304 Non-Directional Polished Stainless Steel Finish

TRUCK MFG		PRODUCT FAMILY		PRODUCT NAME		FINISH	
Peterbilt	1	Tool, Boot and Battery Box Covers	73	379/389 Boot/Tool Box Kit - (1) Long Step Trim, (1) Short Step Trim & (1) Tool Box Handle Cutout Center Panel	001	*#8 304 Non-Directional Polished Stainless Steel	14
				379/389 Battery Box Kit - (1) Step Trims & (1) Combo Step Center Panel	002		
				389 Passenger 2015-2017 DPF Cover Kit - (1) Step Trim & (1) Center Panel	003		
				389 Passenger 2018+ DPF Cover Kit - (1) Step Trim & (1) Center Panel	004		

* Stocked Finish

WINDOW CHOPS

Want that Chopped Top Look? Iowa Customs Window Chops create that look! Design for use on trucks with cab mounted mirrors. Our window chops are available in a paintable finish or #8 304 Non-Directional Polished Stainless Steel and sold in pairs.

FITMENT:

- Peterbilt 389

FINISH OPTIONS:

- Paintable Finish
- #8 304 Non-Directional Polished Stainless Steel



Part Number Example: IC180001-14 - Peterbilt 4" Window Chop Set in #8 304 Non-Directional Polished Stainless Steel Finish

TRUCK MFG		PRODUCT FAMILY		PRODUCT NAME		FINISH	
Peterbilt	1	Window Chops	80	4" Window Chops	001	*8 304 Non-Directional Polished Stainless Steel	14
				5" Window Chops	002	Paintable Finish	21
				6" Window Chops	003		
				7" Window Chops	004		
				8" Window Chops	005		

* Stocked Finish

REMOTE LUBE MOUNT BRACKET

Iowa Custom's Remote Lube Mount Bracket make maintaining a breeze. Centrally locate all of your important grease zerk's all in one easy to install bracket. Marked locations include (2) Clutch Linkage, (2) Cross Shaft & (1) Release Bearing. Expertly crafted from #8 304 Non-Directional Polished Stainless Steel.

FITMENT:

- Peterbilt 379
- Peterbilt 386
- Peterbilt 389

FINISH OPTIONS:

- #8 304 Non-Directional Polished Stainless Steel

FYI:

- Does NOT include Grease Zerks or grease lines.



Part Number Example: IC169001-14 - Remote Lube Mount Bracket in #8 304 Non-Directional Polished Stainless Steel

TRUCK MFG		PRODUCT FAMILY		PRODUCT NAME		FINISH	
Peterbilt	1	Remote Lube Mount	69	Remote Lube Mount Bracket	001	#8 304 Non-Directional Polished Stainless Steel	14

GRILL INSERTS

Iowa Custom's 14GA #8 304 Non-Directional Stainless Steel Punched Grill OEM Replacement is engineered to withstand the everyday work load all while still standing out. Our grills have a 3/8" Round Punched Design with Revers Convex Technology which helps to maintain strength when installed.

FITMENT:

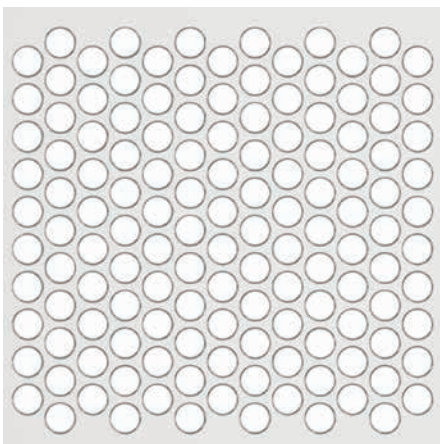
- Peterbilt 389 & 379

FINISH OPTIONS:

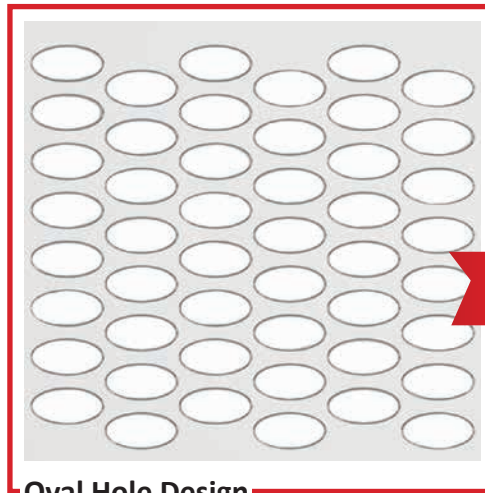
- #8 304 Non-Directional Polished Stainless Steel

FYI:

- Does NOT include mounting hardware or Huck hardware.



3/8 Hole Design



Oval Hole Design



NEW FOR 2022

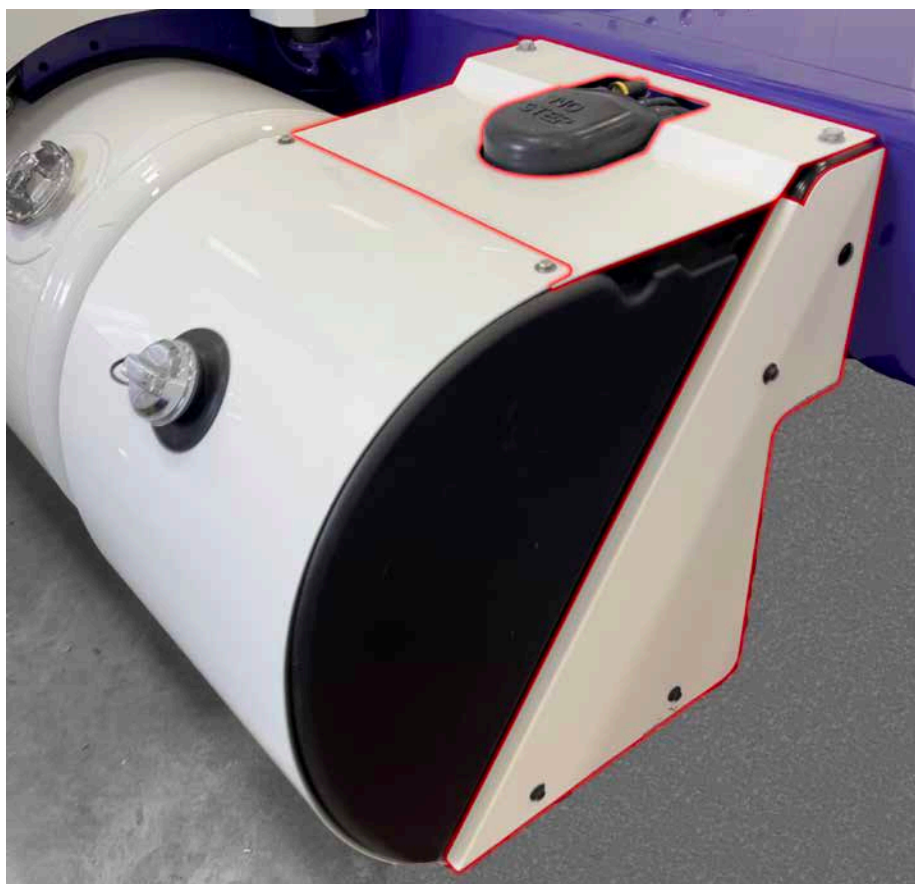


Part Number Example: IC176100-14 - 14GA 3/8" Round Punch Grill Insert in #8 304 Non-Directional Polished Stainless Steel Finish

TRUCK MFG		PRODUCT FAMILY		PRODUCT NAME		FINISH	
Peterbilt	1	Grills & Grill Inserts	76	Peterbilt 389 14GA Punched Grill with 3/8" Round Hole Design	100	#8 304 Non-Directional Polished Stainless Steel	14
				Peterbilt 389 14GA Punched Grill with Small Oval Design	101		
				Peterbilt 379 14GA Punched Grill with 3/8" Round Hole Design	125		
				Peterbilt 379 14GA Punched Grill with Small Oval Design	126		

DEF TANK ACCESSORIES

Iowa Customs' DEF Bracket Cover System covers the OEM DEF Tank Brackets allowing you to further enhance the look of your truck. Expertly crafted from 16GA #8 304 Non-Directional Polished Stainless Steel, the DEF Bracket Covers and DEF Tank Top mount directly to the brackets utilizing the OEM hardware. Depending on the location of your DEF tank, the optional upper tank cover helps further cover the DEF Tank and its components to further complete the look.



(Product shown has been painted)

FITMENT:

- Peterbilt 389
- 2022 or Newer
- Side Covers Fit Medium and Large DEF Tanks
- Top Cover Fits Large Tanks Only

FINISH OPTIONS:

- 16GA #8 304 Non-Directional Polished Stainless Steel

FYI:

- DEF Side Covers are sold in pairs - (1) Left and (1) Right
- DEF Top Cover Sold Separately
- Uses OEM Hardware

NEW FOR 2022

Part Number Example: IC168001-14 - Peterbilt DEF Tank Side Panels in #8 304 Non-Directional Polished Stainless Steel Finish

TRUCK MFG		PRODUCT FAMILY		PRODUCT NAME		FINISH	
Peterbilt	1	DEF Tank Accessories	68	2022 Peterbilt DEF Tank Medium & Large - Side Covers	100	#8 304 Non-Directional Polished Stainless Steel	14
				2022 Peterbilt DEF Tank Large - Top Cover	101		

* Stocked Finish



OEM FRONT FLAP WEIGHT

Iowa Customs OEM Front Curl Free Flap weight fits precisely to the contour and inset of the flap for a very smooth fit and finish. Constructed from 16GA #8 304 Non-Directional Polished Stainless Steel and includes the back plate and polished stainless steel hardware for years and years of trouble-free use.



FITMENT:

- Peterbilt 389

FINISH OPTIONS:

- 14GA #8 304 Non-Directional Polished Stainless Steel

FYI:

- Sold in pairs
- Hardware included
- Back plate included

Part Number Example: IC189001-14 - Peterbilt OEM Front Flap Weight in #8 304 Non-Directional Polished Stainless Steel Finish

TRUCK MFG	PRODUCT FAMILY		PRODUCT NAME			FINISH	
Peterbilt	1	Front Flap Weight	89	3"x14" Peterbilt OEM Front Fender Flap Weight Kit	001	#8 304 Non-Directional Polished Stainless Steel	14

REAR OEM TAIL LIGHT BRACKETS

The Iowa Customs Rear Dual Tail Light Brackets are manufactured from 14ga #8 Non-Directional Polished Stainless Steel. Designed to be an OEM replacement, packaged with driver and passenger side brackets.



FITMENT:

- Universal

FINISH OPTIONS:

- 14GA #8 304 Non-Directional Polished Stainless Steel

FYI:

- Lights, grommets, & wiring not included
- Installs with existing hardware

NEW FOR 2022

Part Number Example: IC983200-14 - Dual 4" Tail Light Hole Rear Bracket in #8 304 Non-Directional Polished Stainless Steel

TRUCK MFG	PRODUCT FAMILY		PRODUCT NAME			FINISH	
Universal	9	Tail Light Rear Bracket	83	Dual 4" Tail Light Hole Rear Bracket	200	#8 304 Non-Directional Polished Stainless Steel	14

33" LIGHT BARS

The Iowa Customs Rear Light Bars are manufactured from either 16ga #8 304 Non-Directional Polished Stainless Steel or Paintable Finish with a Gasketed, Rear Back Plate and our integrated gussets. Multiple designs are available!

FITMENT:

- Universal

FINISH OPTIONS:

- #8 304 Non-Directional Polished Stainless Steel
- Paintable Finish

FYI:

- All Rear Light Bars DO NOT come with the lights.



Part Number Example: IC983025-14 - Universal Fitment 33" x 8-1/2" Light Bar with (4) 4" Round Light Holes in #8 304 Non-Directional Polished Stainless Steel Finish

TRUCK MFG		PRODUCT FAMILY	PRODUCT NAME	FINISH
Universal	9	Rear Light Bars & Center Panels	83 33" x 8-1/2" Light Bar with (4) 4" Round Light Holes	025 * #8 304 Non-Directional Polished Stainless Steel 14
			33" x 8-1/2" Light Bar with (2) 4" Round Light Holes and Trailer Air with (1) 7-Way Hookup	026 *Paintable Finish 21
			33" x 8-1/2" Light Bar with (4) 6-1/2" x 2-1/4" Oval Lights	027
			33" x 8-1/2" Light Bar with (4) 6-1/2" x 2-1/4" Oval Lights and Trailer Air with (1) 7-Way Hookup	028

* Stocked Finish

96" LIGHT BAR

Iowa Customs 96" Light Bars are expertly crafted and manufactured from 14GA #8 304 Non-Directional Polished Stainless Steel. These are engineered with internal structure to help eliminate fatigue areas. Includes Gasketed Rear Access Panel, Gussets and Integrated Flap Hangers

FITMENT:

- Universal

FINISH OPTIONS:

- #8 304 Non-Directional Polished Stainless Steel

FYI:

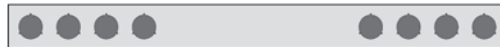
- Footprint: 96" x 8 1/2" x 3"
- Custom Light Configurations Available



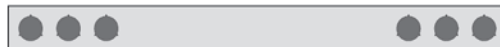
AVAILABLE STOCK CONFIGURATIONS:



96" Light Bar with (13) 4" Round Light Holes



96" Light Bar with (8) 4" Round Light Holes



96" Light Bar with (6) 4" Round Light Holes



96" Light Bar with (4) 4" Round Light Holes

NEW FOR 2022



96" Light Bar with (2) 4" and (28) 3/4" Round Light Holes



96" Light Bar with (4) 4" and (22) 3/4" Round Light Holes



96" Light Bar with (6) 4" and (17) 3/4" Round Light Holes

Part Number Example: IC983040-14 - Universal Fitment 96" x 8-1/2" Light Bar with (13) 4" Round Light Holes in #8 304 Non-Directional Polished Stainless Steel Finish

TRUCK MFG	PRODUCT FAMILY	PRODUCT NAME	FINISH
Universal	9 Rear Light Bars & Center Panels	83 96" x 8-1/2" Light Bar with (13) 4" Round Light Holes	040 * #8 304 Non-Directional Polished Stainless Steel 14
		96" x 8-1/2" Light Bar with (8) 4" Round Light Holes	041
		96" x 8-1/2" Light Bar with (6) 4" Round Light Holes	042
		96" x 8-1/2" Light Bar with (4) 4" Round Light Holes	043
		96" x 8-1/2" Light Bar with (2) 4" & (28) 3/4" Round Light Holes	044
		96" x 8-1/2" Light Bar with (4) 4" & (22) 3/4" Round Light Holes	045
		96" x 8-1/2" Light Bar with (6) 4" & (17) 3/4" Round Light Holes	046

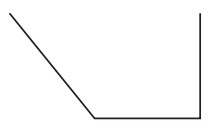
* Stocked Finish

DECK PLATE ACCESSORIES

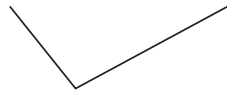
The Iowa Customs deck plate accessories are built using top-of-the-line materials. All of our accessories come complete, which means all mounting, back plates and mounting flanges are included!

RECESSED AIRLINE BOX PROFILES:

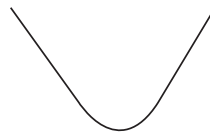
AVAILABLE STOCK CONFIGURATIONS & PROFILES:



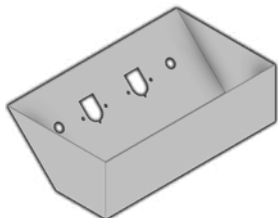
45 Degree Front



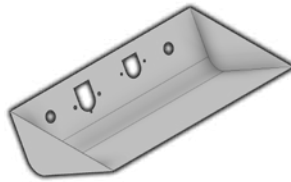
7 Design



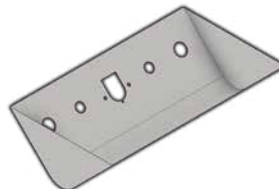
Radius Bottom



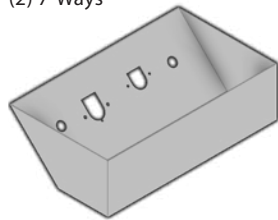
45 Degree Design: Trailer Air & (2) 7-Ways



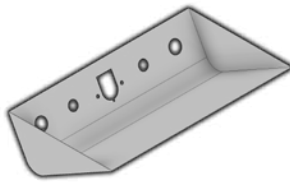
7 Design: Trailer Air, (1) 7-Way & (1) 4/6-Way



Radius Bottom Design: Trailer Air, (1) 7-Way & Hydraulic Hookups



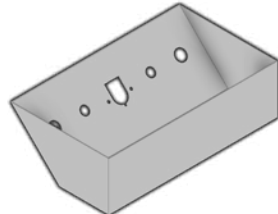
45 Degree Design: Trailer Air, (1) 7-Way & (1) 4/6-Way



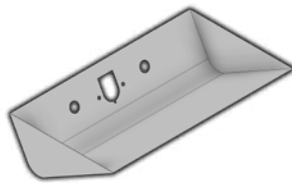
7 Design: Trailer Air, (1) 7-Way & Hydraulic Hookups



Radius Bottom Design: Trailer Air & (1) 7-Way



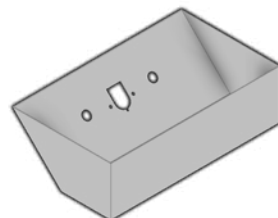
45 Degree Design: Trailer Air, (1) 7-Way & Hydraulic Hookups



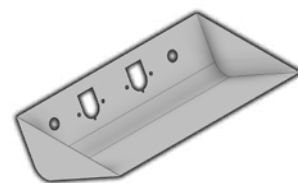
7 Design: Trailer Air & (1) 7-Way



Radius Bottom Design: Trailer Air, (1) 7-Way & (1) 4/6-Way



45 Degree Design: Trailer Air & (1) 7-Way



7 Design: Trailer Air & (2) 7-Ways



Radius Bottom: Trailer Air & (2) 7-Ways

FITMENT:

- Universal

FINISH OPTIONS:

- #8 304 Non-Directional Polished Stainless Steel
- Smooth Aluminum / Paintable Finish

ACCESSORY OPTIONS:

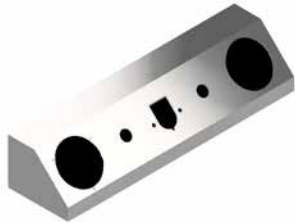
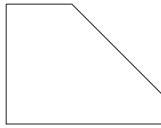
- On-top Airline Box
- Recessed Airline Box:
- 45 Degree Front
- Radius Bottom
- 7 Series Design

Have an existing deck plate? No problem!

Our Recessed Airline Boxes come with a flange, covering up the cut-out in the top of the deck plate for a complete and finished look!



ON-TOP AIRLINE BOX PROFILES:



On Top ALB Design: Trailer Air, (1) 7-Way & (2) 4" Holes



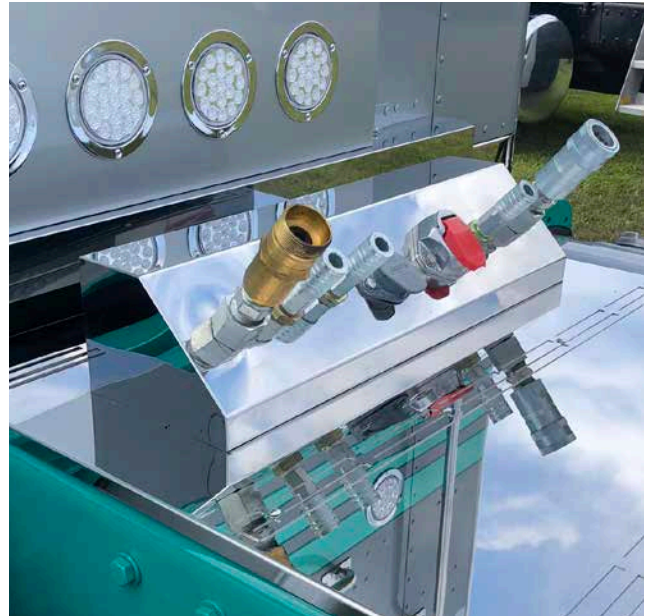
On Top ALB Design: Trailer Air & (2) 7-Ways



On Top ALB Design: Trailer Air & (1) 7-Way



On Top ALB Design: Trailer Air, (1) 7-Way & (2) hydraulic hook-ups



Custom Hole Layout

Part Number Example: IC987000-14 - Universal Fitment Blank On-Top Airline Box in #8 304 Non-Directional Polished Stainless Steel

TRUCK MFG		PRODUCT FAMILY		PRODUCT NAME		FINISH	
Universal	9	Deck Plate Accessories	87			#8 304 Non-Directional Polished Stainless Steel	14
		On-Top Airline Box		Blank - No Holes	000	* Paintable Finish	21
		On-Top Airline Box with Trailer Air		(1) 7-Way & (1) 4/6 - Way Hook - Up	001		
				(1) 7-Way	002		
				(2) 7-Way's	003		
				Hydraulic Hook-Ups and (1) 7-Way	004		
				(1) 7-Way and (2) 4" Light Holes	005		
				(2) 7-Way and (2) 4" Light Holes	006		
		Recessed Airline Box - 45 Degree Front with Flange		Trailer Air and (1) 7-Way Hook-Up	007		
				Trailer Air and (2) 7-Way Hook - Ups	008		
				Trailer Air, (1) 7-Way & (1) 4/6-Way Hook-Up	009		
		Recessed Airline Box - Radius Bottom with Flange		Hydraulic, Trailer Air, (1) 7-Way Hook-Up	010		
				Trailer Air and (1) 7-Way Hook-Up	011		
				Trailer Air and (2) 7-Way Hook - Ups	012		
				Trailer Air, (1) 7-Way & (1) 4/6-Way Hook-Up	013		
		Recessed Airline Box - Series "7" with Flange		Hydraulic, Trailer Air, (1) 7-Way Hook-Up	014		
				Trailer Air and (1) 7-Way Hook-Up	015		
				Trailer Air and (2) 7-Way Hook - Ups	016		
				Trailer Air, (1) 7-Way & (1) 4/6-Way Hook-Up	017		
				Hydraulic, Trailer Air, (1) 7-Way Hook-Up	018		

* Stocked Finish

FRAME / BUMPER LIGHTS

The patented Frame/Bumper Light is a dual-sided, eight-pound, triple chrome-plated, universal mounted light. This product comes with all mounting hardware, your choice of LED color and lens color and requires no drilling for installation!

FITMENT:

- Universal
- Single Frame Fitment Only

FINISH OPTIONS:

- Chrome



Part Number Example: IC994001-11 - Universal Fitment Frame Light with Amber LEDs with Amber Lens in Chrome Finish

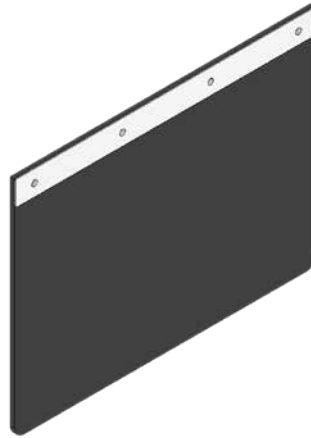
TRUCK MFG		PRODUCT FAMILY		PRODUCT NAME			FINISH	
Universal	9	Frame Light	94	Frame Light with Amber LEDs and Amber Lens	001	* Chrome	12	
				Frame Light with Amber LEDs and Clear Lens	002			
				Frame Light with Red LEDs and Red Lens	003			
				Frame Light with Red LEDs and Clear Lens	004			
				Frame Light with Amber LED Clear Lens Front and Red LED Clear Lens Back	005			
				Frame Light with Amber LED Amber Lens Front with Red LED Red Lens Back	006			

* Stocked Finish



TOP MUD FLAP ACCENTS

Increase the looks of your mud flap with Iowa Customs high quality Top Mud Flap Accents. Made from 14GA #8 304 Non-Directional Polished Stainless Steel.



FITMENT:

- Universal

FINISH OPTIONS:

- #8 304 Non-Directional Polished Stainless Steel

FYI:

- Fits any 24" Wide Flap**
- Includes Polished Stainless Steel Hardware

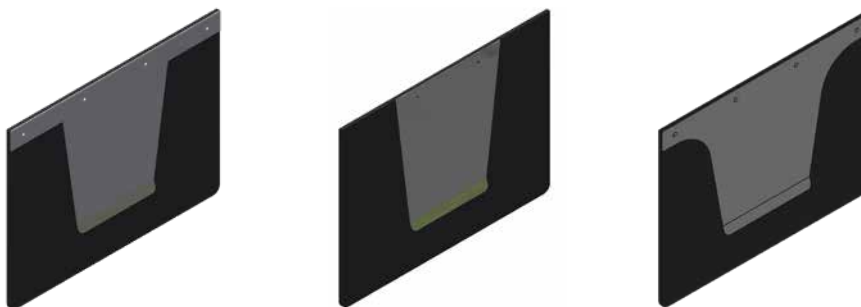
Part Number Example: IC974010-14 - Universal Top Mud Flap Accents in #8 304 Non-Directional Polished Stainless Steel

TRUCK MFG		PRODUCT FAMILY		PRODUCT NAME		FINISH	
Universal	9	Anti-Sail Brackets	74	2" x 24" Top Mud Flap Accents	010	*#8 304 Non-Directional Polished Stainless Steel	14

* Stocked Finish

ANTI-SAILS

Iowa Customs 14GA #8 304 Non-Directional Polished Stainless Steel Anti-Sail Brackets are engineered with the top flap mount for an integrated and sleek design. Sold in pairs.



FITMENT:

- Universal

FINISH OPTIONS:

- #8 304 Non-Directional Polished Stainless Steel

FYI:

- Includes Polished Stainless Steel Hardware

Part Number Example: IC974001-14 - Universal Anti-Sails in #8 304 Non-Directional Polished Stainless Steel

TRUCK MFG		PRODUCT FAMILY		PRODUCT NAME		FINISH	
Universal	9	Anti-Sails	74	14" Anti-Sail w/ 2"x24" Integrated Flap Accents - Radius Design	001	*#8 304 Non-Directional Polished Stainless Steel	14
				14" Anti-Sail w/ 2"x24" Integrated Flap Accents - Straight Line Design	002		
				Anti-Sail Panel 12" Wide x 14" Long	003		

* Stocked Finish

FLAP WEIGHTS

Our patented Curl Free Flap Weight System, made from 16ga #8 304 Non-Directional Polished Stainless Steel, eliminates the dreaded mud flap curl.

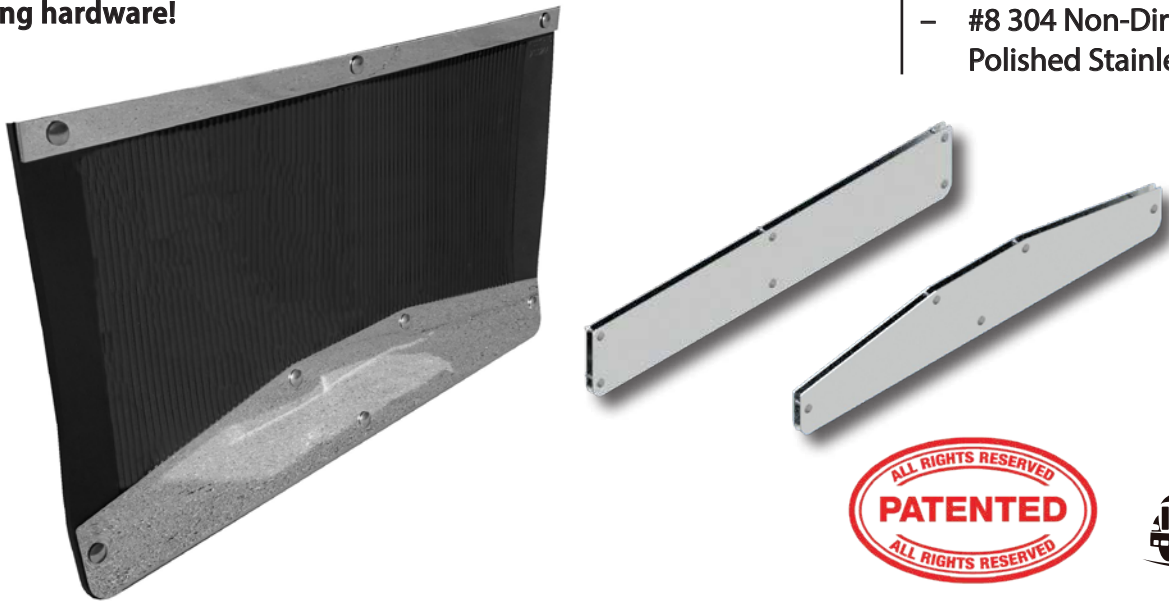
The system's double bend design with an interlocking back plate assures years of use and comes with all polished stainless steel mounting hardware!

FITMENT:

- Universal

FINISH OPTIONS:

- #8 304 Non-Directional Polished Stainless Steel



Part Number Example: IC989001-14 - Universal Fitment 3" x 12" Tapered Flap Weight Set for 0" to 1/2" Thick Flap in #8 304 Non-Directional Polished Stainless Steel Finish

TRUCK MFG	PRODUCT FAMILY		PRODUCT NAME			FINISH	
Universal	9	Flap Weights	89	3" x 12" Tapered Design - Fits 0"-1/2" Thick Flap	001	* #8 304 Non-Directional Polished Stainless Steel	14
				3" x 14" Tapered Design - Fits 0"-1/2" Thick Flap	002		
				3" x 16" Tapered Design - Fits 0"-1/2" Thick Flap	003		
				3" x 18" Tapered Design - Fits 0"-1/2" Thick Flap	004		
				3" x 20" Tapered Design - Fits 0"-1/2" Thick Flap	005		
				3" x 24" Tapered Design - Fits 0"-1/2" Thick Flap	006		
				4" x 12" Tapered Design - Fits 0"-1/2" Thick Flap	007		
				4" x 14" Tapered Design - Fits 0"-1/2" Thick Flap	008		
				4" x 16" Tapered Design - Fits 0"-1/2" Thick Flap	009		
				4" x 18" Tapered Design - Fits 0"-1/2" Thick Flap	010		
				4" x 20" Tapered Design - Fits 0"-1/2" Thick Flap	011		
				4" x 24" Tapered Design - Fits 0"-1/2" Thick Flap	012		
				5" x 18" Tapered Design - Fits 0"-1/2" Thick Flap	013		
				5" x 24" Tapered Design - Fits 0"-1/2" Thick Flap	014		

* Stocked Finish

PRODUCT NAME	
6" x 24" Tapered Design - Fits 0"-1/2" Thick Flap	015
* 7" x 24" Tapered Design - Fits 0"-1/2" Thick Flap	016
* 8" x 24" Tapered Design - Fits 0"-1/2" Thick Flap	017
* 9" x 24" Tapered Design - Fits 0"-1/2" Thick Flap	018
2" x 12" Rectangle Design - Fits 0"-1/2" Thick Flap	025
2" x 14" Rectangle Design - Fits 0"-1/2" Thick Flap	026
2" x 16" Rectangle Design - Fits 0"-1/2" Thick Flap	027
2" x 18" Rectangle Design - Fits 0"-1/2" Thick Flap	028
2" x 20" Rectangle Design - Fits 0"-1/2" Thick Flap	029
2" x 24" Rectangle Design - Fits 0"-1/2" Thick Flap	030
3" x 12" Rectangle Design - Fits 0"-1/2" Thick Flap	031
3" x 14" Rectangle Design - Fits 0"-1/2" Thick Flap	032
3" x 16" Rectangle Design - Fits 0"-1/2" Thick Flap	033
3" x 18" Rectangle Design - Fits 0"-1/2" Thick Flap	034
3" x 20" Rectangle Design - Fits 0"-1/2" Thick Flap	035
3" x 24" Rectangle Design - Fits 0"-1/2" Thick Flap	036
4" x 12" Rectangle Design - Fits 0"-1/2" Thick Flap	037
4" x 14" Rectangle Design - Fits 0"-1/2" Thick Flap	038
4" x 16" Rectangle Design - Fits 0"-1/2" Thick Flap	039
4" x 18" Rectangle Design - Fits 0"-1/2" Thick Flap	040
4" x 20" Rectangle Design - Fits 0"-1/2" Thick Flap	041
4" x 24" Rectangle Design - Fits 0"-1/2" Thick Flap	042
5" x 18" Rectangle Design - Fits 0"-1/2" Thick Flap	043
5" x 24" Rectangle Design - Fits 0"-1/2" Thick Flap	044
6" x 24" Rectangle Design - Fits 0"-1/2" Thick Flap	045
*7" x 24" Rectangle Design - Fits 0"-1/2" Thick Flap	046
* 8" x 24" Rectangle Design - Fits 0"-1/2" Thick Flap	047
* 9" x 24" Rectangle Design - Fits 0"-1/2" Thick Flap	048
3" x 18" Tapered Design - Fits 1/2"-3/4" Thick Flap	080
3" x 24" Tapered Design - Fits 1/2"-3/4" Thick Flap	081
4" x 18" Tapered Design - Fits 1/2"-3/4" Thick Flap	082
4" x 24" Tapered Design - Fits 1/2"-3/4" Thick Flap	083

PRODUCT NAME	
5" x 18" Tapered Design - Fits 1/2"-3/4" Thick Flap	084
5" x 24" Tapered Design - Fits 1/2"-3/4" Thick Flap	085
6" x 24" Tapered Design - Fits 1/2"-3/4" Thick Flap	086
* 7" x 24" Tapered Design - Fits 1/2"-3/4" Thick Flap	087
* 8" x 24" Tapered Design - Fits 1/2"-3/4" Thick Flap	088
* 9" x 24" Tapered Design - Fits 1/2"-3/4" Thick Flap	089
3" x 18" Rectangle Design - Fits 1/2"-3/4" Thick Flap	095
3" x 24" Rectangle Design - Fits 1/2"-3/4" Thick Flap	096
4" x 18" Rectangle Design - Fits 1/2"-3/4" Thick Flap	097
4" x 24" Rectangle Design - Fits 1/2"-3/4" Thick Flap	098
5" x 18" Rectangle Design - Fits 1/2"-3/4" Thick Flap	099
5" x 24" Rectangle Design - Fits 1/2"-3/4" Thick Flap	100
6" x 24" Rectangle Design - Fits 1/2"-3/4" Thick Flap	101
* 7" x 24" Rectangle Design - Fits 1/2"-3/4" Thick Flap	102
* 8" x 24" Rectangle Design - Fits 1/2"-3/4" Thick Flap	103
* 9" x 24" Rectangle Design - Fits 1/2"-3/4" Thick Flap	104

* Sold Individually



GLOW KITS



Our patented Glow Kits create an even under glow... no "hot spots" here! The kits utilize 3/4" mini button lights and come in a variety of kits for any application!



How Many Lights Needed?

- 48" Cab & Sleeper Kit - (42) 3/4" Lights
- 48" Sleeper Only Kit - (30) 3/4" Lights
- 63" Cab & Sleeper Kit - (48) 3/4" Lights
- 63" Sleeper Only Kit - (36) 3/4" Lights
- 12" Section = (3) 3/4" Lights
- 24" Section = (6) 3/4" Lights
- 16' Frame Kit - (48) 3/4" Lights
- 20' Frame Kit - (60) 3/4" Lights
- 24' Frame Kit - (72) 3/4" Lights



Part Number Example: IC995999-14 - - With Light Kit: IC995999-14-97

TRUCK MFG		PRODUCT FAMILY		PRODUCT NAME	FINISH		
Universal	9	Glow Kits	95	48 Inch Sleeper and Cab - (42) 3/4" Lights Needed	999	* #8 304 Non-Directional Polished Stainless Steel Finish	14
				63 Inch & 70 Inch Sleeper and Cab - (48) 3/4" Lights Needed	998		
				48 Inch Sleeper Only - (30) 3/4" Lights Needed	997		
				63 Inch & 70 Inch Sleeper Only - (36) 3/4" Lights Needed	996		
		Single Frame Truck Fitment		Truck Frame 16ft 8ft of Glow Kit Brackets for Frame Installation on Both Sides of V	995		
				Truck Frame 20ft 10ft of Glow Kit Brackets for Frame Installation on Both Sides of V	994		
				Truck Frame 24ft 12ft of Glow Kit Brackets for Frame Installation on Both Sides of V	993		
		Double Frame Truck Fitment		Truck Frame 16ft 8ft of Glow Kit Brackets for Frame Installation on Both Sides of V	992		
				Truck Frame 20ft 10ft of Glow Kit Brackets for Frame Installation on Both Sides of V	991		
				Truck Frame 24ft 12ft of Glow Kit Brackets for Frame Installation on Both Sides of V	990		
				12 Inch Glow Kit Section - (3) 3/4" Lights Needed	001		
				24 Inch Glow Kit Section - (6) 3/4" Lights Needed	002		
				Glow Kit Frame Clamps - Single Frame	003		
				Glow Kit Frame Clamps - Double Frame	004		

* Stocked Finish

FITMENT:

- Universal

FYI:

- #8 304 Non-Directional Polished Stainless Steel
- All Sleeper Only Kits and Sleeper and Cab Kits come with glow kit brackets and mounting hardware.

LIGHT OPTIONS:

- Add -XX to end of part number for desired light color:
- 97 - Amber Lens / Amber LED Light Kit
- 96 - Clear Lens / Amber LED Light Kit
- 95 - Red Lens / Red LED
- 94 - Clear Lens / Red LED
- 93 - Dual Revolution - Amber/Blue
- 92 - Dual Revolution - Amber/Green
- 91 - Dual Revolution - Amber/Purple
- 90 - Dual Revolution - Amber/Red
- 89 - Dual Revolution - Amber/White
- 88 - Dual Revolution - Red/Blue
- 87 - Dual Revolution - Red/Green
- 86 - Dual Revolution - Red/Purple
- 85 - Dual Revolution - Red/White

SLIDE IN RAIL DECK PLATE ACCESSORIES

The Slide-In Rail Deck Plate accessory line from Iowa Customs allows for the simple addition of a Recessed Airline Box and Storage Box to your existing Slide-In Rail Deck Plate. Expertly crafted from Aluminum and always in stock!

*****NOTE: All Grip Sectionalized Deck Plate Sections, Mounting Rails, Mounting Kits and Sections are sold and manufactured by others*****



Part Numbers Shown: IC991037-21 & IC991041-21



Photo with Closed Lid - Part Number IC991041-21



Photo with Open Lid - Part Number IC991041-21



FITMENT:

- Universal

FINISH OPTIONS:

- Smooth Aluminum

FYI:

- Mounting Brackets Included
- Recessed Airline Box Configurations
- TAIR-7W-TAIR
- TAIR-7W-7W-TAIR
- TAIR-7W-4/6W-TAIR
- Hydro-TAIR-7W-TAIR-Hydro
- Custom Airline Box Configurations Available



Part Number Example: IC991041-21 Slide-In Rail Recessed Airline Box with TAIR-7W-TAIR Configuration in Smooth Aluminum

TRUCK MFG		PRODUCT FAMILY		PRODUCT NAME		FINISH	
Universal	9	Slide-In Rail Deck Plate Access.	91	Slide-In Rail Recessed Airline Box with TAIR-7W-TAIR Configuration	037	*Smooth Aluminum	21
				Slide-In Rail Recessed Airline Box with TAIR-7W-7W-TAIR Configuration	038		
				Slide-In Rail Recessed Airline Box with TAIR-7W-4/6W-TAIR Configuration	039		
				Slide-In Rail Recessed Airline Box with Hyd-TAIR-7W-TAIR-Hyd Config.	040		
				Slide-In Rail 14" x 22" Recessed Storage Box	041		

* Stocked Finish

IN-FRAME DECK PLATES

Our patented In-Frame Deck Plate System is flush-mounted in between the frame for that super smooth look. Installation is simple with our revolutionary mounting clip design!

We stock 36" - 96" deck plates, but if you're looking for a custom length or configuration, just contact us!



FITMENT:

- Inside Frame Measurement of 27"
- Deck Plate Height - 1.250"

FINISH OPTIONS:

- #8 304 Non-Directional Polished Stainless Steel
- Smooth Aluminum

FYI:

- Only 36"-96" deck plates are stocked. Custom deck plates are built to your specifications.



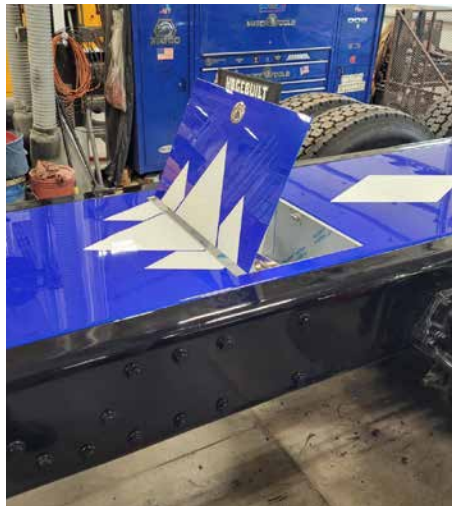
STOCK IN-FRAME DECK PLATE LENGTHS

Part Number Example: IC993001-14

TRUCK MFG		PRODUCT FAMILY		PRODUCT NAME		FINISH	
Universal	9	In Frame Deck Plate	93	26-7/8"W x 36"L In-Frame Deck Plate	001	*#8 304 Non-Directional Polished Stainless Steel	14
				26-7/8"W x 48"L In-Frame Deck Plate	002	* Smooth Aluminum	21
				26-7/8"W x 60"L In-Frame Deck Plate	003		
				26-7/8"W x 72"L In-Frame Deck Plate	004		
				26-7/8"W x 84"L In-Frame Deck Plate	005		
				26-7/8"W x 96"L In-Frame Deck Plate	006		

* Stocked Finish

CUSTOM DECK PLATES



CUSTOM DECK PLATE OPTIONS:

One Piece Deck Plate Up To 13'-6"

Finishes:

Smooth Aluminum or #8 304 Non-Directional Polished Stainless Steel

Airline Box Options:

- Mini-Recessed Airline Box
- Recessed Airline Box
- On-Top Airline Box

Storage Boxes:

- 14"L x 22"W x 8"H Storage Box with Convenience LED Light
- 28"L x 22"W x 8"H Storage Box with Convenience LED Light



ON-FRAME SECTIONALIZED DECK PLATES

Our patented Sectionalized Deck Plate System allows the mixing and matching of our recessed airline boxes and storage boxes to achieve the ultimate customized design look! This system installs on top of the frame with our patented mounting system for ease of mounting.



FITMENT:

- Any truck with an outside frame measurement of 34"

FINISH OPTIONS:

- #8 304 Non-Directional Polished Stainless Steel
- Smooth Aluminum

SECTIONS AVAILABLE:

- 12" - 24" Filler
- On-Top Airline Box
- Recessed Airline Box
- 14" x 22" Storage Box

Part Number Example: IC991001-14 - Universal Fitment Sectional Deck Plate 12" Filler Section in Smooth Aluminum Finish

TRUCK MFG		PRODUCT FAMILY		PRODUCT NAME			FINISH	
Universal	9	Sectional Deck Plate	91	12" Filler Section	001	#8 304 Non-Directional Polished Stainless Steel	14	
				14" Filler Section	002	* Smooth Aluminum	21	
				16" Filler Section	003			
				18" Filler Section	004			
				20" Filler Section	005			
				22" Filler Section	006			
				24" Filler Section	007			
				12" On-Top Airline Box	008			
				18" Recessed Airline Box - Trailer Air and (1) 7-Way Hook-Up	009			
				20" Recessed Tool Box	010			
				18" Recessed Air Box - Small Airline Box - Trailer Air and (1) 7-Way	011			
				18" Recessed Airline Box - Trailer Air and (2) 7-Way Hook-Ups	012			
				18" Recessed Airline Box - Trailer Air and (1) 7-Way & (1) 4/6-Way Hook-Ups	013			
				18" Recessed Airline Box - Trailer Air and (1) 7-Way & Hydraulic Hook-Ups	014			

* Stocked Finish

ON-TOP DECK PLATE

Universal On-Top Deck Plates by Iowa Customs are master crafted for superior fit ability and to mount to virtually any application. Our top quality materials ensure years of maintenance free use.



FITMENT:

- Universal

FINISH OPTIONS:

- #8 304 Non-Directional Polished Stainless Steel

FYI:

- Fits Virtually on Any Truck
- Stocked in 3' to 8' Sections
- Custom Configurations Available
- 34" W Deck Plates



Part Number Example: IC992001-14 - Universal Fitment 36" On Top Deck Plate in #8 304 Non-Directional Polished Stainless Steel Finish

TRUCK MFG	PRODUCT FAMILY	PRODUCT NAME	FINISH
Universal	9	On-Top Deck Plate 92	36" On-Frame Deck Plate 001 *#8 304 Non-Directional Polished Stainless Steel 14
			48" On-Frame Deck Plate 002
			60" On-Frame Deck Plate 003
			72" On-Frame Deck Plate 004
			84" On-Frame Deck Plate 005
			96" On-Frame Deck Plate 006

* Stocked Finish

REVERSE T-BAR

Reverse T-Bars from Iowa Customs are expertly crafted and manufactured from 14GA #8 304 Non-Directional Polished Stainless Steel. Our T-Bars are engineered with internal structure to help eliminate fatigue areas. Includes Gasketed Rear Access Panel, Gussets and Integrated Flap Hangers.

FITMENT:

- Universal

FINISH OPTIONS:

- #8 304 Non-Directional Polished Stainless Steel

FYI:

- Footprint: 96" Long x 18" Tall x 3"
- Lights not included
- Custom Light Configurations Available

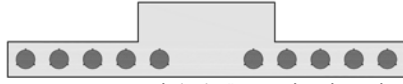
AVAILABLE STOCK CONFIGURATIONS



Reverse T-Bar with (6) 4" Round Light Holes



Reverse T-Bar with (8) 4" Round Light Holes



Reverse T-Bar with (10) 4" Round Light Holes



Reverse T-Bar with (12) 4" Round Light Holes

NEW FOR 2022



Reverse T-Bar with (2) 4" and (28) 3/4" Round Light Holes



Reverse T-Bar with (4) 4" and (22) 3/4" Round Light Holes



Reverse T-Bar with (6) 4" and (16) 3/4" Round Light Holes



Part Number Example: IC975020-14 - Universal 96" x 18" Tall Reverse T-Bar with (13) 4" Round Light Holes in #8 304 Non-Directional Polished Stainless Steel Finish

MFG	PRODUCT FAMILY	PRODUCT NAME	FINISH
Universal	9 Reverse T-Bar	75 Reverse T-Bar with (12) 4" Round Light Holes - 18" Drop x 96" Long	020 * #8 304 Non-Directional Polished Stainless Steel 14
		Reverse T-Bar with (8) 4" Round Light Holes - 18" Drop x 96" Long	021
		Reverse T-Bar with (6) 4" Round Light Holes - 18" Drop x 96" Long	022
		Reverse T-Bar with (10) 4" Round Light Holes - 18" Drop x 96" Long	023
		Reverse T-Bar with (2) 4" and (28) 3/4" Round Light Holes - 18" Drop x 96" Long	025
		Reverse T-Bar with (4) 4" and (22) 3/4" Round Light Holes - 18" Drop x 96" Long	026
		Reverse T-Bar with (6) 4" and (16) 3/4" Round Light Holes - 18" Drop x 96" Long	027

* Stocked Finish

REAR T-BAR

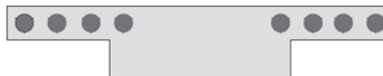
Rear T-Bars From Iowa Customs are expertly crafted and manufactured from 14GA #8 304 Non-Directional Polished Stainless Steel. Our T-Bars are engineered with internal structure to help eliminate fatigue areas. Includes Gasketed Rear Access Panel, Gussets and Integrated Flap Hangers.



AVAILABLE STOCK CONFIGURATIONS



Rear T-Bar with (13) 4" Round Light Holes



Rear T-Bar with (8) 4" Round Light Holes



Rear T-Bar with (9) 4" Round Light Holes



Rear T-Bar with (6) 4" Round Light Holes

FITMENT:

- Universal

FINISH OPTIONS:

- #8 304 Non-Directional Polished Stainless Steel

FYI:

- Footprint: 96" Long x 18" Tall x 3"
- Lights not included
- Custom Light Configurations Available



Part Number Example: IC975001-14 - Universal 96" x 18" Tall Rear T-Bar with (13) 4" Round Light Holes in #8 304 Non-Directional Polished Stainless Steel Finish

MFG	PRODUCT FAMILY			PRODUCT NAME	FINISH		
Universal	9	Rear T-Bars	75	Rear T-Bar with (13) 4" Round Lights - - 96" x 18" Tall	001	* #8 304 Non-Directional Polished Stainless Steel	14
				Rear T-Bar with (9) 4" Round Lights - - 96" x 18" Tall	002		
				Rear T-Bar with (6) 4" Round Lights - - 96" x 18" Tall	003		
				Rear T-Bar with (8) 4" Round Lights - - 96" x 18" Tall	004		

* Stocked Finish

REAR CENTER PANELS

The Iowa Customs Rear Center Panels are expertly manufactured ensuring superior quality. The panels come with our specially designed Gusset System that strengthens the Rear Center Panel along with gasketed back plate to keep the elements out!



AVAILABLE IN 16" AND 20"



16" Drop with
(5) 4" Lights



16" Drop with
(5) 3/4" Lights and
(4) 4" Light Holes



16" Drop with
(3) 3/4" Light Holes and
(5) 4" Light Holes



20" Drop with
(5) 3/4" Lights and
(4) 4" Light Holes

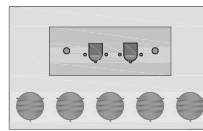
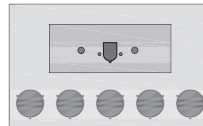


20" Drop with
(4) 4" Lights



20" Drop with
(3) 3/4" Light Holes and
(5) 4" Light Holes

AVAILABLE IN 20"



FITMENT:

- Universal

FINISH OPTIONS:

- #8 304 Non-Directional Polished Stainless Steel
- Paintable Finish

FYI:

- Multiple configuration options available.
- All Rear Center Panels DO NOT come with the lights.



Part Number Example: IC983001-14 - Universal Fitment Rear Center Panel with Trailer Air and (1) 7-Way with No Light Holes in #8 304 Non-Directional Polished Stainless Steel Finish

TRUCK MFG		PRODUCT FAMILY		PRODUCT NAME		FINISH	
Universal	9	Rear Light Bars & Center Panels	83			* #8 304 Non-Directional Polished Stainless Steel	14
		33"W x 20" Drop Rear Center Panel With Airline Box		Trailer Air and (1) 7-Way - No Light	001	Paintable Finish	21
				Trailer Air and (1) 7-Ways - (5) 4" Round Light Holes	002		
				Trailer Air and (2) 7-Way - No Lights	003		
				Trailer Air and (2) 7-Ways - (5) 4" Round Light Holes	004		
		33"W x 20" Drop Rear Center Panel		Blank - No 4" Round Light Holes	000		
				(4) 4" Light Holes	005		
				(5) 4" Light Holes	006		
				(3) 3/4" Lights and (5) 4" Round Light Holes	007		
				(5) 3/4" Lights and (4) 4" Round Light Holes	008		
		33"W x 16" Drop Rear Center Panel		(5) 4" Light Holes	009		
				(3) 3/4" Lights and (5) 4" Round Light Holes	010		
				(5) 3/4" Lights and (4) 4" Round Light Holes	011		
				(4) 4" Light Holes	012		
		33"W x 20" Drop Rear Center Panel		(4) 4" Light Holes and (4) 4" Light Holes In Back Panel	050		
				(5) 4" Light Holes and (4) 4" Light Holes in Back Panel	051		

* Stocked Finish

WATERMELON LIGHT ADAPTER KIT

Iowa Customs 4" light conversion kit makes installing a watermelon light into any 4" round light hole, a breeze. Pre-assembled for ease of installation, these are available with or without Trux watermelon lights.

FITMENT:

- Universal

FINISH OPTIONS:

- #8 304 Stainless Steel

FYI:

- Pre-assembled for easy installation

NEW FOR 2022



Part Number Example: IC966001-14 – 4" Light to Watermelon Light Adapter Kit – Bezel and Adapter Plate in #8 304 Stainless Steel

TRUCK MFG		PRODUCT FAMILY		PRODUCT NAME			FINISH	
Universal	9	Light Accessories	66	4" Light to Watermelon Light Adapter Kit – Bezel and Adapter Plate	001	*#8 304 Stainless Steel	14	
				4" Light to Watermelon Light Adapter Kit – Bezel and Adapter Plate with Trux Red Lens / Red LED Watermelon Light	002			
				4" Light to Watermelon Light Adapter Kit – Bezel and Adapter Plate with Trux Clear Lens / Red LED Watermelon Light	003			

* Stocked Finish

STEP PLATES & INSERTS

Our patented and unique Step Plate System makes creating a custom look easy. Simply mix and match various finishes of both step plates and inserts to create that custom combo!

FITMENT:

- Universal



STEP PLATE FINISHES:

- Billet Aluminum
- Chrome
- Powder Coat Black

INSERT FINISHES:

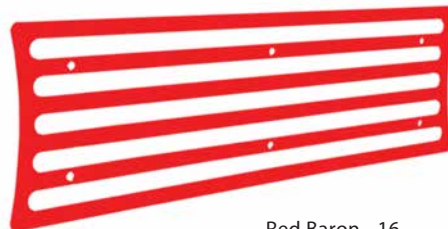
- Brushed Stainless Steel
- #8 304 Non-Directional Polished Stainless Steel
- Powder Coat Std. Colors



SERIES ONE



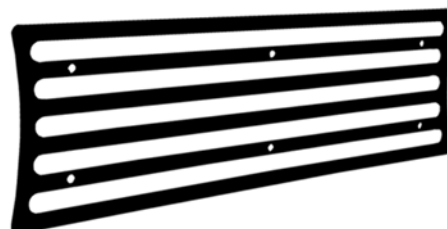
Chrome - 12



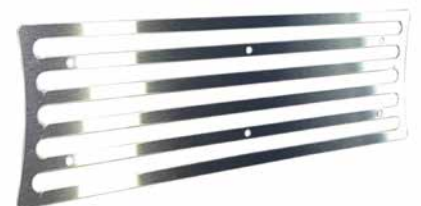
Red Baron - 16



PO Blue - 18

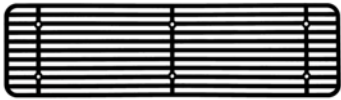


Gloss Black- 15

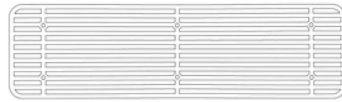


Stainless Steel - 14

SERIES TWO



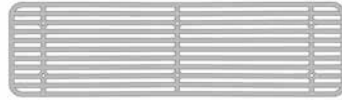
Gloss Black - 15



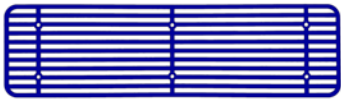
Crystal White - 17



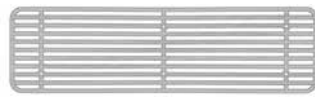
Red Baron - 16



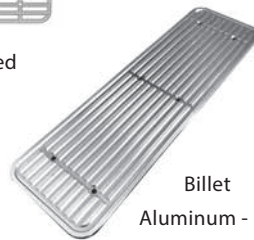
Brushed Stainless Steel- 3



PO Blue - 18



Non- Directional Polished
Stainless Steel - 14



Billet
Aluminum - 11



STEP PLATES

Part Number Example: IC997001-11 - Universal Fitment 6" x 12" Series 1 Step Plate in Billet Aluminum Finish

TRUCK MFG		PRODUCT FAMILY		PRODUCT NAME		FINISH	
Universal	9	Step Plates	97	6" x 12" Step Plate - Series 1 - Concave Ends	001	* Billet Aluminum	11
				6" x 20" Step Plate - Series 1 - Concave Ends	002	* Chrome	12
				6" x 30" Step Plate - Series 1 - Concave Ends	003	* Black	15
				4" x 20" Step Plate - Series 1 - Concave Ends	004		
				6" x 12" Step Plate - Series 2 - Rectangle	021		
				6" x 20" Step Plate - Series 2 - Rectangle	022		
				6" x 30" Step Plate - Series 2 - Rectangle	023		
				3" x 20" Step Plate - Series 2 - Rectangle	024		

STEP PLATE INSERTS

Part Number Example: IC996001-11 - Universal Fitment 6" x 12" Step Plate Insert in Brushed Stainless Steel Finish

TRUCK MFG		PRODUCT FAMILY		PRODUCT NAME		FINISH	
Universal	9	Step Plate Inserts	96	6" x 12" Step Plate - Concave Ends	001		
				6" x 20" Step Plate - Concave Ends	002	*Gloss Black	15
				6" x 30" Step Plate - Concave Ends	003	*Brushed Stainless Steel	13
				4" x 20" Step Plate - Concave Ends	004	*#8 304 Non-Directional Polished Stainless Steel	14
				6" x 12" Step Plate - Series 2 - Rectangle	021	*Red Baron	16
				6" x 20" Step Plate - Series 2 - Rectangle	022	*Crystal White	17
				6" x 30" Step Plate - Series 2 - Rectangle	023	*PO Blue	18
				3" x 20" Step Plate - Series 2 - Rectangle	024		

* Stocked Finish

STORAGE SOLUTIONS

We have universal storage kit options as well. They come in many different sizes and drawer configurations to fit nearly ANY truck! Available in two different widths: 14" and 15 1/4".



FITMENT:

- Universal

FINISH OPTIONS:

- Brushed Stainless Steel
- Powder Coat Black

CONFIGURATIONS:

- 2-Drawers
15-1/4" W x 14" H
- 4-Drawers
15-1/4" W x 29" H
- 5-Drawers
14" W x 38" H
- 5-Drawers with Tabletop
14" W x 38" H
- 1-Drawer
15-1/4" W x 10" H



Part Number Example: IC990001-13 - Universal Fitment 5-Drawer Storage Solution in Brushed Stainless Steel Finish

TRUCK MFG		PRODUCT FAMILY		PRODUCT NAME		FINISH	
Universal	9	Universal Storage Solutions	90			* Brushed Stainless Steel	13
						* Gloss Black	15
				5-Drawer Storage Solution - 14"Wx38" T	006		
				5-Drawer Storage Solution with Table Top - 14"Wx38" T	007		
				1-Drawer Storage Solution - 15-1/4"W x 6-1/2" T	009		
				2-Drawer Storage Solution - 15-1/4"W x 14" T	010		
				3-Drawer Storage Solution - 15-1/4"Wx21" T	011		
				3-Drawer Storage Solution - 15-1/4"Wx24" T	012		
				4-Drawer Storage Solution - 15-1/4"W x 29-1/2" T	013		
				1-Drawer Storage Solution - 15-1/4"W x 10" T	016		

* Stocked Finish

MICROWAVE & INVERTER KIT

Universal Fitment allows installation of a Microwave and Inverter virtually anywhere in your truck. Kit comes with Microwave, Microwave Hanging Bracket, Inverter and Inverter Installation Kit.

FITMENT:

- Universal

FINISH OPTIONS:

- Gloss Black

KITS INCLUDE:

- Includes the following: microwave hanging bracket, microwave, inverter, and inverter installation kit.
- Inclusive design allows for mounting virtually anywhere!



**Inverter
Installation Kit**



Part Number Example: IC984030-15 - Universal Fitment Microwave & Inverter Kit in Gloss Black Finish

TRUCK MFG		PRODUCT FAMILY		PRODUCT NAME			FINISH	
Universal	9	Microwave Kits	84	Microwave & Inverter Kit	030	*Gloss Black	15	

* Stocked Finish

IFTA PERMIT HOLDER

The 16GA 304 #8 304 Non-Directional Polished Stainless Steel IFTA Permit Holders provide the best way to display your permits. Adhesive Mounting for Universal applications and Flange Mounting Available!



4" x 4" Adhesive



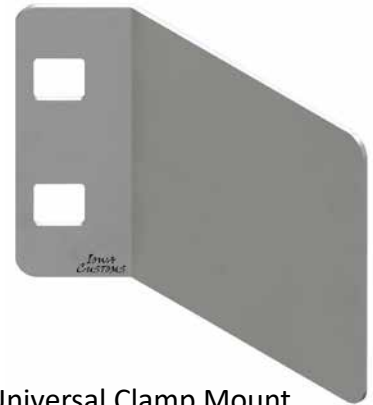
4" x 8" Adhesive



4" x 4" Flange Mount



8" x 13" Adhesive



Universal Clamp Mount

FITMENT:

- Universal

FINISH OPTIONS:

- #8 304 Non-Directional Polished Stainless Steel

FYI:

- Universal Mount with 3M VHB Adhesives
- Flange Mount Available
- Fits 1-5/8" Exhaust Clamp On-Center Bolt Spacings

Part Number Example: IC985001-14 - Universal Fitment IFTA 4" x 8" Permit Panel in #8 304 Non-Directional Stainless Steel

TRUCK MFG		PRODUCT FAMILY		PRODUCT NAME		FINISH	
Universal	9	IFTA Brackets	85			*#8 304 Non-Directional Polished Stainless Steel	14
		Universal Mount Permit Holder		4" x 8" Adhesive Mount	001		
		Universal Mount IFTA Permit Holder		4" x 4" Adhesive Mount	002		
				4" x 4" Bolt Mount	003		
		Universal Mount IFTA Holder		8" x 13" Adhesive Mount	004		
		Universal Mount IFTA Permit Holder for Kenworth and Peterbilt		Lower Exhaust Clamp Mounted	005		

* Stocked Finish

ALABAMA			
Fitzgerald Peterbilt of Birmingham	Birmingham	205-379-8300	www.fitzgeraldpeterbilt.com
Fitzgerald Peterbilt of Huntsville	Madison	256-464-2400	www.fitzgeraldpeterbilt.com
Fitzgerald Peterbilt of Montgomery	Hope Hull	334-245-6500	www.fitzgeraldpeterbilt.com
ARIZONA			
Rush Truck Center - Tucson Location	Tucson	520-205-8500	www.rushtruckcenters.com
ARKANSAS			
Empire Chrome - West Memphis Location	West Memphis	870-735-5033	www.empirechromeshop.com
Peterbilt of Fort Smith	Van Buren	479-632-9140	www.tlgrtrucks.com
CALIFORNIA			
A & L Truck Supply - Bakersfield Location	Bakersfield	661-363-0683	www.aandltrucksupply.com
A & L Truck Supply - Fresno Location	Fresno	559-228-1299	www.aandltrucksupply.com
A & L Truck Supply - Tulare Location	Tulare	559-684-1806	www.aandltrucksupply.com
Coast Counties Truck & Equipment	Salinas	831.758.2441	
Rush Truck Center - Fontana Location	Fontana	909-823-7080	www.rushtruckcenters.com
South Sacramento Parts	Sacramento	916-381-7278	
Vernon Truck Wash	Barstow	760-256-0306	www.truckwashstations.com
COLORADO			
Rush Truck Center - Denver Location	Commerce City	303-292-3170	www.rushtruckcenters.com
Rush Truck Center - Grand Junction	Grand Junction		www.rushtruckcenters.com
Rush Truck Center - Greeley Location	Greeley	970-353-7919	www.rushtruckcenters.com
FLORIDA			
75 Chrome Shop	Wildwood	352-748-0330	www.75chromeshop.com
Raney's Inc.	Ocala	888-888-7990	www.raneys.com
Rush Truck Center - Orlando Location	Orlando	321-221-2300	www.rushtruckcenters.com
GEORGIA			
Peterbilt of Atlanta, LLC	Jackson	404-592-9980	www.peteatlanta.com
IDAHO			
Jackson Group Peterbilt - Idaho Falls Location	Idaho Falls	208-528-0004	www.jgpete.com
Jackson Group Peterbilt Boise	Boise	888-718-9140	www.jgpete.com
Jerome Peterbilt	Jerome	208-644-9000	www.jeromepeterbilt.com
Magic Valley Peterbilt	Heyburn	208-679-3600	www.jgpete.com
Peterbilt of Caldwell	Caldwell	208-453-7020	
ILLINOIS			
DB Kustom Trucks, Inc.	Antioch	224-788-5055	www.dbkustomtrucks.com
Effingham Chrome Shop	Effingham	217-347-0151	www.truckomat.com
GTG Peterbilt - Quincy	Quincy	217-214-0100	www.graskpeterbilt.com
JX Peterbilt - Bloomington	Bloomington	1-800-322-0421	www.jxe.com
JX Peterbilt - Lansing	Lansing	855-355-5505	www.jxe.com
JX Peterbilt - Rockford	Rockford	877-222-0013	www.jxe.com
JX Peterbilt - Wadsworth	West Memphis	1-800-243-7383	www.jxe.com
NCP Customs	Sidney	217-202-8317	www.ncpcustoms.com
INDIANA			
Chrome Dome	Haubstadt	812-937-4060	www.wildweaselchrome.com
Davis Brothers Designs	Owensville	812-874-2248	
i65 Truck and Accessories	Remington	888-465-8782	www.i65chromeshop.com
JX Peterbilt - Ft Wayne	New Haven	877-493-4300	www.jxe.com
Nationwide Chrome and Customs	Fremont	260-495-0121	www.nationwidesls.com
IOWA			
Allstate Peterbilt of Clear Lake	Clear Lake	641-357-8240	www.allstatepeterbilt.com
H D Equipment Inc	Grand Mound	563-547-1895	www.hdequipmentinc.com
GTG Peterbilt - Cedar Rapids	Cedar Rapids	319-777-0503	www.cedarrapidstruckcenter.com
GTG Peterbilt - Davenport	Davenport	563-391-4300	www.quadcitypete.com
Iowa 80 Truckstop	Walcott	563-284-6965	www.iowa80.com
J&T Truck and Trailer Repair	Hubbard	1-800-970-1323	
M43 Chrome Shop	Odebolt	712-668-2878	
MHC Kenworth - Des Moines	Des Moines	844-435-5790	www.mhc.com
Mike's Auto Refinishing	Garner	641-923-2741	
Peterbilt of Council Bluffs & Omaha	Council Bluffs	712-325-9700	www.pbtruck.com
Peterbilt of Des Moines	Des Moines	515-967-0355	www.pbtruck.com
Peterbilt of Sioux City	Sioux City	712-252-4566	www.pbtruck.com
Silver Customs	Marion	319-540-1396	www.silvercustomsonline.com
Storm Lake Truck & Trailer	Storm Lake	712-732-6381	www.stormlaketruckandtrailers.com
Truck Center Companies - Waterloo	Waterloo	1-800-582-5789	www.truckcentercompanies.com

KANSAS			
Kansas City Peterbilt	Kansas City	913-441-2888	www.kcpete.com
Peterbilt of Garden City	Garden City	620-277-2646	www.peterbiltofgardencity.com
Truck Town	Colby	785-460-8785	www.shopsemitruck.com
KENTUCKY			
Martin's Peterbilt - Paintsville Location	Paintsville	606-297-6237	www.martinspeterbilt.com
Martin's Peterbilt - Pikeville Location	Pikeville	606-437-1777	www.martinspeterbilt.com
Martin's Peterbilt of Central Kentucky	Lexington	859-268-0138	www.martinspeterbilt.com
Martin's Peterbilt - London Location	London	606-878-6410	www.martinspeterbilt.com
LOUISIANA			
Kenworth of Louisiana	Gray	985-876-3000	www.kwlouisiana.com
Peterbilt of Louisiana	Baton Rouge	225-273-8300	www.peterbiltofLA.com
MAINE			
HCR Chrome Shop	Bangor	207-922-2728	www.hcrchrome.com
MICHIGAN			
JX Peterbilt - Grand Rapids	Wyoming	1-800-878-3654	www.jxe.com
JX Peterbilt - Kalamazoo	Kalamazoo	844-864-2106	www.jxe.com
Reliable Road Service	Holland	616-886-2159	www.reliablemobiletruck.com
Truck Center Companies	Mankato	507-625-4118	www.truckcentercompanies.com
V-Max Truck Sales	Zeeland	616-772-1643	www.vmaxtrucks.com
MINNESOTA			
Allstate Peterbilt of Alexandria	Alexandria	320-759-3947	www.allstatepeterbilt.com
Allstate Peterbilt of Eagan	Eagan	651-361-1020	www.allstatepeterbilt.com
Allstate Peterbilt of Glencoe	Glencoe	320-864-2700	www.allstatepeterbilt.com
Allstate Peterbilt of Mankato	Mankato	507-519-6180	www.allstatepeterbilt.com
Allstate Peterbilt of Rochester	Stewartville	507-523-2333	www.allstatepeterbilt.com
Allstate Peterbilt of Rogers	Rogers	763-428-4333	www.allstatepeterbilt.com
Allstate Peterbilt of Sauk Rapids	Sauk Rapids	320-299-8789	www.allstatepeterbilt.com
Allstate Peterbilt of South St. Paul	South St. Paul	651-321-9284	www.allstatepeterbilt.com
Allstate Peterbilt of Winona	Winona	507-858-6267	www.allstatepeterbilt.com
Clearwater Truck Center	Clearwater	320-558-6565	www.clearwatertruckcenter.com
Ron's Repair, Inc.	Worthington	507-343-4265	www.ronsrepairinc.com
Truck Center Companies - Faribault	Faribault	507-334-1653	www.truckcentercompanies.com
MISSOURI			
4 State Trucks	Joplin	417-624-2900	www.4statetrucks.com
Graybill Chrome	Rock Port	1-800-279-4288	www.graybillchrome.com
Horse & Buggy	California	573-796-1927	
Joplin 44 Petro Truck Stop	Joplin	417-624-3400	www.joplin44.com
Oak Grove 70 Petro Truck Stop	Oak Grove	816-690-4455	www.oakgrovepetro.com
Peterbilt of Joplin	Joplin	417-623-0222	www.tlgtrucks.com
Peterbilt of Sikeston	Sikeston	573-471-6181	
Peterbilt of Springfield	Strafford	417-865-5355	www.tlgtrucks.com
St. Louis Peterbilt	Sauget	618-337-4000	www.tlgtrucks.com
Tag Truck Center	Sikeston	573-471-7100	www.tagtruckcenter.com
MONTANA			
Montana Peterbilt - Missoula Location	Missoula	406-721-6100	www.montanapeterbilt.com
MotorPower KW	Great Falls	800-823-4848	www.mtrpwr.com
NEBRASKA			
Full Throttle Truck & Trailer Repair	Columbus	402-563-9199	
MHC Kenworth - Omaha	Omaha	844-438-5904	www.mhc.com
MHC Kenworth - Lincoln	Lincoln	855-273-0898	www.mhc.com
Nebraska Peterbilt	Grand Island	308-382-1044	www.nebraskapeterbilt.com
Peterbilt of Lincoln	Lincoln	402-858-8400	www.pbtruck.com
Peterbilt of Norfolk	Norfolk	402-844-4749	www.pbtruck.com
Truck Center Companies - Columbus	Columbus	402-564-7060	www.truckcentercompanies.com
NEW HAMPSHIRE			
Berube's Truck Accessories	Bow	603-224-7370	www.berubes.com
NEW JERSEY			
Elizabeth Truck Center - 878 North Avenue East	Elizabeth	908-355-8800	www.elizabethtruckcenter.com
NEW YORK			
Champlain Peterbilt	Champlain	518-298-3835	www.champlainpeterbilt.com
Elizabeth Truck Center - 40 Corporate Dr	Holtsville	631-307-9600	www.elizabethtruckcenter.com
Elizabeth Truck Center - 528 Industrial Loop W	Staten Island	718-948-6422	www.elizabethtruckcenter.com
King of Chrome	Montgomery	845-784-1706	
NORTH CAROLINA			
Kenly 95 Petro Truck Stop	Kenly	919-284-5121	www.petrotruckstops.com
Piedmont Peterbilt	Piedmont	336-668-3050	www.piedmontpeterbilt.com

NORTH DAKOTA			
Allstate Peterbilt of Bismarck	Bismarck	701-255-7555	www.allstatepeterbilt.com
Allstate Peterbilt of Dickinson	Dickinson	701-255-9424	www.allstatepeterbilt.com
Allstate Peterbilt of Fargo	Fargo	701-282-6200	www.allstatepeterbilt.com
Allstate Peterbilt of Grand Forks	Grand Forks	701-402-3026	www.allstatepeterbilt.com
Allstate Peterbilt of Jamestown	Jamestown	701-952-6890	www.allstatepeterbilt.com
Allstate Peterbilt of Williston	Williston	701-774-0225	www.allstatepeterbilt.com
OHIO			
Allstate Peterbilt of Findlay	Findlay	419-423-3441	www.allstatepeterbilt.com
Capital City Chrome and Customs	Pataskala	740-964-2766	www.capitalcitychrome.com
Chrome Depot	Mantua	330-274-3180	www.chromedepot.com
Iowa 80/Truckomat	Hebron	740-467-2818	
OKLAHOMA			
Bells and Whistles Chrome Shop	Oklahoma City	405-470-8400	www.bellsandwhistles.com
Rush Truck Center - Tulsa Location	Tulsa	918-447-8630	www.rushtruckcenters.com
ONTARIO			
Chrome Supply Warehouse	Belleville	613-966-0990	www.chromesupplywarehouse.com
OREGON			
Jackson Group Peterbilt-Portland Lagoon	Portland	1-800-556-4998	www.jgpete.com
Hub City Chrome	Chiloquin	541-783-2995	www.hubcitychrome.com
PENNSYLVANIA			
Hunter Keystone Peterbilt - Lancaster Location	Lancaster	717-299-6630	www.huntertrucksales.com
SASKATCHEWAN			
Cervus Equipment Peterbilt	Saskatoon	306-242-3411	www.cervusequipment.com
SOUTH DAKOTA			
Allstate Peterbilt of Rapid City	Box Elder	605-787-9345	www.allstatepeterbilt.com
Peterbilt of Sioux Falls	Sioux Falls	605-338-0040	www.peterbiltofsiouxfalls.com
Sioux Falls Kenworth	Sioux Falls	605-332-7112	www.northamericantrucktrailer.com
TENNESSEE			
Chrome Country	Smyrna	615-220-7730	www.chromecountry.com
Chrome Shack	White Pine	865-674-7051	www.chromeshack.com
Fitzgerald Glider Kits Byrdstown	Byrdstown	888-250-2570	www.fitzgeraldgliderkits.com
Fitzgerald Trucks & Trailers	Byrdstown	931-881-3887	
Peterbilt Truck Center of Memphis	Memphis	1-800-824-7992	www.peterbilttrkcenters.com
TEXAS			
Elite Truck Accessories	Dallas	214-291-1676	www.etatexas.com
Empire Chrome - San Antonio Location	Converse	210-661-6474	www.empirechromeshop.com
Falls Truck Center	Wichita Falls	940-723-9274	www.fallstruckcenter.com
K D Truck Parts	Euless	1-800-842-9942	www.kdchrome.com
Rush Truck Center - DFW Location	Irving	469-706-5200	www.rushtruckcenters.com
Rush Truck Center - Fort Worth Location	Fort Worth	817-625-9500	www.rushtruckcenters.com
Rush Truck Center - Texarkana Location	Nash	903-336-6800	www.rushtruckcenters.com
Rush Truck Center - Tyler Location	Tyler	903-617-2500	www.rushtruckcenters.com
Texas Chrome Shop	Atascosa	210-622-5757	www.texaschromeshop.com
UTAH			
Jackson Group Peterbilt - Salt Lake City Location	Salt Lake City	801-486-8781	www.jgpete.com
Jackson Group Peterbilt - Vernal	Vernal	435-781-233	www.jgpete.com
VIRGINIA			
Fitzgerald Peterbilt of Bristol	Bristol	276-429-4400	www.fitzgeraldpeterbilt.com
Fitzgerald Peterbilt of Fancy Gap	Fancy Gap	276-728-2573	www.fitzgeraldpeterbilt.com
WASHINGTON			
A & L Truck Supply - Union Gap Location	Union Gap	509-452-8989	www.aandltrucksupply.com
Peterbilt of Kelso - Jackson Group	Kelso	360-425-5856	www.jgpete.com
WEST VIRGINIA			
Martins Peterbilt	Hurricane	855-898-8333	www.martinspeterbilt.com
WISCONSIN			
Allstate Peterbilt of Eau Claire	Eau Claire	715-718-6215	www.allstatepeterbilt.com
Allstate Peterbilt of Rice Lake	Rice Lake	715-736-4010	www.allstatepeterbilt.com
Allstate Peterbilt of Superior	Superior	715-392-4440	www.allstatepeterbilt.com
Allstate Peterbilt of Tomah	Tomah	608-372-0917	www.allstatepeterbilt.com
Amcan Truck Parts	Pewaukee	262-806-3322	www.amcantruckparts.com
Big Rig Chrome Shop	Oshkosh	920-769-0611	www.bigrigchromeshop.com
Homer's Custom Chrome Shop	Milwaukee	414-355-4001	www.homerscustomchromeshop.com
JX Peterbilt - Green Bay	De Pere	1-800-813-3613	www.jxe.com
JX Peterbilt - Madison	Madison	1-800-813-2513	www.jxe.com
JX Peterbilt - Mineral Point	Mineral Point	844-303-1590	www.jxe.com
JX Peterbilt - Waukesha	Pewaukee	1-800-558-0524	www.jxe.com

WARRANTY & SHIPPING POLICIES

GENERAL POLICY

All warranty/return claims must be requested by one of our authorized dealers.

WARRANTY ON PRODUCTS

Warranty claims may require digital photos for verification purposes. All Stainless Steel and Aluminum Products carry a 1-year from date of purchase warranty that protects against defective workmanship. Any modified, improperly installed or installation considered as a "Non-Standard Application" will void any warranty. Contact warranties@iowacustoms.com for warranty claims.

RETURN OF PRODUCT

Iowa Customs will accept returns for product that is unopened and free of damages within one year from purchase date. All product returns must be requested by one of our authorized dealers and must be approved by Iowa Customs before any shipment is returned. Please contact your dealer to request an RMA form. Please write the RMA number on all boxes.

RE-STOCKING FEE

- A 25% restocking fee applies to all returns. Keep in mind that Iowa Customs cannot guarantee a full credit for any items that are returned damaged and/or incomplete. Please take time to re-package products as failure to do so risks partial or zero credit. If the product arrived via UPS, it must be returned via UPS. If a product arrived LTL on a pallet, product must return via LTL on a pallet.
- Returns are processed in the form of company credit.

DAMAGED SHIPMENTS

For any Damaged Shipments;

- Sign for the shipment as "Damaged" on all delivery paperwork.
- Do Not Disassemble pallet. Take clear photos and send them to an Iowa Customs Service Representative. Contact us at 712-792-6443.
- Do Not Discard any items unless authorized by Iowa Customs.

IOWA CUSTOMS

For all the latest and greatest products, go to
WWW.IOWACUSTOMS.COM

FOLLOW US



