

IOWA CUSTOMS

SEMI TRUCK ACCESSORIES MANUFACTURER
WWW.IOWACUSTOMS.COM

PRODUCT INFORMATION

Volume 1-9 Issue 1

Table of Contents

KENWORTH

IFTA Permit Holder.....	1
Seat Base Adapter.....	2
Refrigerator & Storage Kits.....	3
Refrigerator & Microwave Kits.....	4

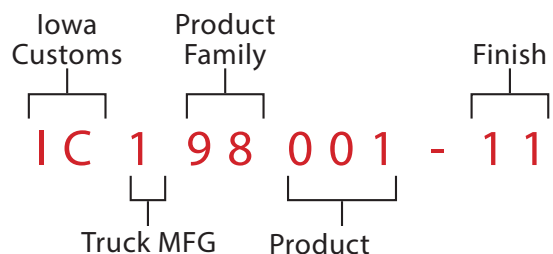
PETERBILT

Clutch Extender.....	5
IFTA Permit Holder.....	6
Grease Guards.....	7
Refrigerator & Microwave Kits.....	8
Refrigerator Kits.....	9
Storage Solutions.....	10
Seat Base Adapter.....	11
Cab & Cowl Panels.....	12
Sleeper Panels.....	13
Shock Box Covers.....	14
Sleeper Air Bag Covers.....	15
Tool & Boot Box Covers.....	16
Window Chops.....	17

UNIVERSAL

33" Light Bars.....	18
96" Light Bars.....	19
Deck Plate Accessories.....	20
Frame / Bumper Lights.....	22
Flap Accents.....	23
Flap Weights.....	24
Glow Kits.....	26
IFTA Permit Holder.....	27
In-Frame Deck Plates.....	28
Custom Deck Plates.....	29
On-Frame Sectionalized Deck Plates....	30
On-Top Deck Plate.....	37
Microwave & Inverter Kits.....	31
Rear Center Panels.....	32
Reverse & Rear T-Bar.....	33
Step Plates & Inserts.....	34
Storage Solutions.....	36

HOW TO ORDER:



Every product and option combination has an associated number which must be referenced when placing an order. Obtain all above numbers from the tables located in the corresponding product pages of this guide. Each custom product also has its own unique part number.

Call your approved Iowa Customs Dealer to place your order. Have Technical Questions? Give us a call!



Iowa Customs offers an industry leading 48 - hour Quick Ship program on many of our products. Look for this logo to see if this is apart of this great program.

IFTA PERMIT HOLDER

The 16GA #8 304 Non-Directional Polished Stainless Steel IFTA Permit Holders mount securely to the exhaust for an eye catching, non-adhesive fitment. A great option for displaying IFTA Permits.



FITMENT:

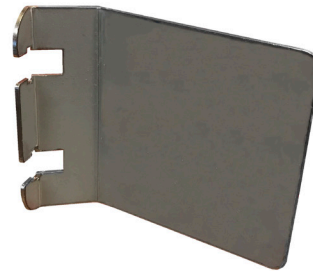
Kenworth W9

FINISH OPTIONS:

#8 304 Non-Directional
Polished Stainless Steel

FYI:

Mounts Using 3-1/2"
Clamps



K
E
N
W
O
R
T
H

TRUCK MFG		PRODUCT FAMILY		PRODUCT NAME		FINISH	
Kenworth	2	IFTA Brackets	85	Kenworth W9 IFTA Brackets - Sold As A Pair - 1-Permit	005	*#8 304 Non-Directional Polished Stainless Steel	14
				Kenworth W9 IFTA Brackets - Sold As A Pair - 2-Permit	006		

* Stocked Finish

SEAT BASE ADAPTERS

Our patented Seat Base Adapters are your solution for added leg room and adapting after-market or OEM seats without drilling holes into your floor!

Each Seat Base Adapter is manufactured to match your specific brand of seat making installation simple. Adapters come with all mounting hardware included!

FITMENT:

Kenworth W9

FINISH OPTIONS:

Billet Aluminum

Chrome

Powder Coat Std. Colors
Black, Red Baron, Crystal
White, PO Blue, Yellow



KENWORTH

TRUCK MFG		PRODUCT FAMILY		PRODUCT NAME		FINISH	
Kenworth	2	Seat Base Adapter	99	8" OEM / National & Knedler	001	* Billet Aluminum	11
				10" Bostrom Wide Ride/ Seats Inc Legacy Lo - Pre July 1, 2018	002	* Chrome	12
				10" Seats Inc Legacy Gold / Silver	003	* Gloss Black	15
				10" National Seating Series 2000 Ultra Ride	006	Red Baron	16
				12" Sears Atlas	004	Crystal White	17
				12" Seats Inc. - Legacy Lo- Post July 1, 2018	008	PO Blue	18
				14" National Lo Profile Seat Base	005	Yellow	19

* Stocked Finish

REFRIGERATOR KITS

Our patented Refrigerator Kits offer storage solutions and the ability to simply install convenience into your Kenworth!

All storage units feature a one-piece drawer system ensuring the bottoms will never fall out. The ball bearing slides use Stay Closed Technology, which means the drawers will never open while driving down the road!



KENWORTH FITMENT:

W9

FINISH OPTIONS:

Brushed Stainless Steel
Gloss Black

KIT INCLUDES THE FOLLOWING:

Refrigerator: 1.8 Cu. Ft - Black Finish - 12 v 3.2 Amp
No inverter needed.

W9 Refrigerator & Storage Kit Includes: Refrigerator, 4 - Drawer System and Trim Kit

Optional brushed stainless steel front available.



K
E
N
W
O
R
T
H

TRUCK MFG	PRODUCT FAMILY	PRODUCT NAME	FINISH
Kenworth	2	Refrigerator Kit	84
		Kenworth W9 Refrigerator Kit with 4 Drawer Storage - Passenger Side Installation	005
			* Brushed Stainless Steel
			* Gloss Black
			13
			15

* Stocked Finish

REFRIGERATOR & MICROWAVE KITS

Our patented Refrigerator & Microwave Kits offer the conveniences of home while saving valuable time and money while on the road.

All storage units feature a one-piece drawer system ensuring the bottoms will never fall out. The ball bearing slides use Stay Closed Technology, which means the drawers will never open while driving down the road!



Kenworth W9 Installation



Inverter Installation Kit



KENWORTH FITMENT:

W9

FINISH OPTIONS:

- Brushed Stainless Steel
- Gloss Black

FYI:

Includes Inverter Installation Kit (See Photo)

Microwave: 750w 0.5 cu. ft. 120v - Black Finish - Must run with the included inverter.

Refrigerator: 1.8 Cu. Ft - Black Finish - 12 v 3.2 Amp No inverter needed.

W9 Refrigerator & Microwave Kit Includes: Refrigerator, Microwave, Inverter and Install Kit 2-Drawer System and Trim kit

Optional brushed stainless steel front available.

TRUCK MFG		PRODUCT FAMILY		PRODUCT NAME		FINISH	
Kenworth	2	Refrigerator Kit	84	Kenworth W9 Refrigerator Kit with Microwave, Inverter, Inverter Installation Kit and 2-Drawer Storage - Passenger Side Installation	006	* Brushed Stainless Steel	13
						* Gloss Black	15

* Stocked Finish

CLUTCH EXTENDER

The patented Clutch Pedal Extender changes the position and increases the angle of the foot in relation to the floor for less strain on the ankle, thereby improving driver ergonomics.

FITMENT:

- Peterbilt 379
- Peterbilt 386
- Peterbilt 389

FINISH OPTIONS:

- Billet Aluminum
- Chrome



BEFORE



AFTER

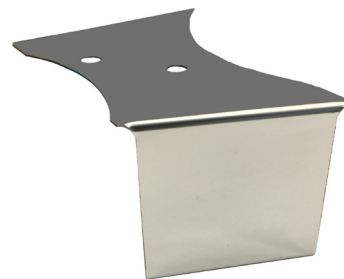


TRUCK MFG		PRODUCT FAMILY		PRODUCT NAME		FINISH	
Peterbilt	1	Clutch Pedal Extender	98	2" Clutch Pedal Extender	001	* Billet Aluminum	11
						* Chrome	12

* Stocked Finish

IFTA PERMIT HOLDER

The 16GA #8 304 Non-Directional Polished Stainless Steel IFTA Permit Holders provide a Non-Adhesive way to display your permits. For use with after-market angled exhaust clamps or sleeper mount see fitment.



FITMENT:

- Peterbilt 379
- Peterbilt 389
- Peterbilt 579

FINISH OPTIONS:

#8 304 Non-Directional Polished Stainless Steel

FYI:

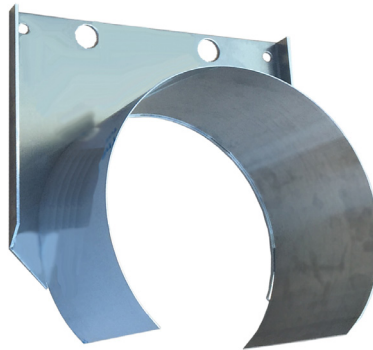
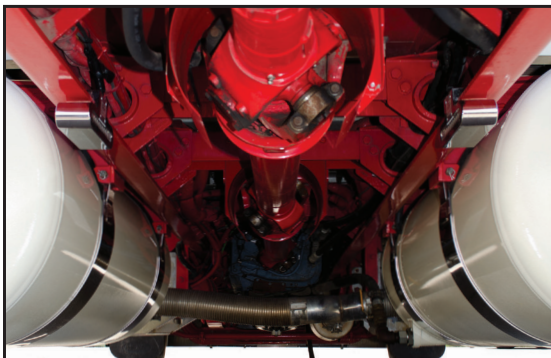
- Mounts using existing hardware
- Use with angle clamps only
- 579 sleeper mount

TRUCK MFG		PRODUCT FAMILY		PRODUCT NAME		FINISH	
Peterbilt	1	IFTA Brackets	85	Peterbilt 379, 386 & 389 IFTA Brackets - Sold As A Pair - 1-Permit	001	*#8 304 Non-Directional Polished Stainless Steel	14
				Peterbilt 379, 386 & 389 IFTA Brackets - Sold As A Pair - 2-Permit	002		
				Peterbilt 579 IFTA Brackets - Sold As A Pair - 1-Permit	003		
				Peterbilt 579 IFTA Brackets - Sold As A Pair - 2-Permit	004		

* Stocked Finish

GREASE GUARDS

This patented Grease Guard System prevents unwanted u-joint grease from splattering the underside of your rig. Expertly crafted from Aluminum and Brushed Stainless Steel.



FITMENT:

- Peterbilt 379
- Peterbilt 386
- Peterbilt 389

FINISH OPTIONS:

Brackets are finished black powder coat.

FYI:

Complete kits include guards for the hanger bearings and the front side of both rear axles.



PETERBILT

TRUCK MFG		PRODUCT FAMILY		PRODUCT NAME		FINISH	
Peterbilt	1	Grease Guards	86	Complete Hanger Bearing and Drive Axle Kit for 280" - 292" Wheel Base	999	*Gloss Black	15
				Complete Hanger Bearing Kit for 280" - 292" Wheel Base	998		
				Complete Hanger Bearing and Drive Axle Kit for 292"-315" Wheel Base	995		
				Complete Hanger Bearing Kit for 292" - 315" Wheel Base	996		
				Rear Drive Axle Kit for 280" - 315" Wheel Base	997		

* Stocked Finish

REFRIGERATOR & MICROWAVE KITS



Inverter Installation Kit



PETERBILT FITMENT:

379

386

389

FINISH OPTIONS:

Brushed Stainless Steel

Gloss Black

FYI:

Peterbilt 379, 386, & 389 Refrigerator and Microwave Kits Include: Refrigerator, Microwave, Inverter, Inverter Installation kit, 1-Drawer Storage Unit, Trim Kit and Hardware

Microwave: 750w 0.5 cu. ft. 120v - Black Finish - Must run with the included inverter.

Refrigerator: 1.8 Cu. Ft - Black Finish - 12 v 3.2 Amp No inverter needed.

Optional brushed stainless steel front available.

TRUCK MFG		PRODUCT FAMILY	PRODUCT NAME		FINISH		
Peterbilt	1	Refrigerator Kit	84	Peterbilt 379 Refrigerator, & Microwave, Inverter Kit for Passenger Side Installation	009	* Brushed Stainless Steel	13
				Peterbilt 389 2008-2015 Refrigerator, & Microwave, Inverter Kit for Passenger Side Installation	010	* Gloss Black	15
				Peterbilt 389 2016+ Refrigerator, & Microwave, Inverter Kit for Passenger Side Installation	011		
				Peterbilt 379, 386 & 389 Refrigerator, & Microwave, Inverter Kit, for Drivers Side Installation	015		

* Stocked Finish

REFRIGERATOR KITS

Our patented Refrigerator Kits offer storage solutions and the ability to simply install convenience into your Peterbilt!

All storage units feature a one-piece drawer system ensuring the bottoms will never fall out. The ball bearing slides use Stay Closed Technology, which means the drawers will never open while driving down the road!



Peterbilt 389 Installation



Peterbilt 579 Installation

PETERBILT FITMENT:

- 379
- 386
- 389
- 579

FINISH OPTIONS:

- Brushed Stainless Steel
- Powder Coat Black

FYI:

Peterbilt 379, 386 & 389 Refrigerator Kit Includes: Refrigerator, 3-Drawer System and Trim Kit

Refrigerator: 1.8 Cu. Ft - Black Finish - 12 v 3.2 Amp
No inverter needed.

Peterbilt 579 option is refrigerator only (no storage with refrigerator).

Optional brushed stainless steel front available.



PETERBILT

TRUCK MFG		PRODUCT FAMILY		PRODUCT NAME		FINISH	
Peterbilt	1	Refrigerator Kit	84	Peterbilt 379, 386 & 389 Refrigerator Kit for Drivers Side Installation	001	* Brushed Stainless Steel	13
				Peterbilt 379 Refrigerator Kit for Passenger Side Installation	002	* Gloss Black	15
				Peterbilt 389 2008-2015 Refrigerator Kit for Passenger Side Installation	003		
				Peterbilt 389 2016+ Refrigerator Kit for Passenger Side Installation	004		
				Peterbilt 579 Refrigerator Kit - Drivers or Passenger Side Installation	008		

* Stocked Finish

STORAGE SOLUTIONS

Our Peterbilt Storage Kits are ideal for keeping your truck organized. Our 5 drawer kit includes 38" storage solution with an open shelf option above and a trim kit to give it the finished looked. The Table Top Option is only offered in the 5 drawer unit. All units feature 1-piece drawers, so the bottoms never fall out and ball bearing slides with "Stay-Closed" technology, so the drawers will never open while going down the road!

PETERBILT FITMENT:

- 379 (Both D&P Side)
- 386
- 389 (D Side Only)
- 579
 - Both D&P Side
 - 3-Drawer Option Only

FINISH OPTIONS:

- Brushed Stainless Steel
- Powder Coat Black



Table top optional w/5 drawers



3-Drawer Storage - Peterbilt 579



TRUCK MFG		PRODUCT FAMILY		PRODUCT NAME		FINISH	
Peterbilt	1	Storage Solutions & Kits	90	5-Drawer Storage Kit - 14"W x 38"T - 379, 386 & 389 Drivers Side Installation	017	* Brushed Stainless Steel	13
				5-Drawer Storage Kit - 14"W x 38"T - 379 Passenger Side Installation	018	* Gloss Black	15
				5-Drawer Storage Kit with Table Top - 14"Wx38" T - 379, 386 & 389 Drivers Side Installation	019		
				5-Drawer Storage Kit with Table Top - 14"Wx38" T - 379 Passenger Side Installation	020		
				3-Drawer Storage for 579	021		

* Stocked Finish

SEAT BASE ADAPTERS

Our patented Seat Base Adapters are your solution for added leg room and adapting after-market or OEM seats without drilling holes into your floor!

Each Seat Base Adapter is manufactured to match your specific brand of seat making installation simple. Adapters come with all mounting hardware included!



FITMENT:

Peterbilt
- 379, 386, 389 & 579's

FINISH OPTIONS:

Billet Aluminum
Chrome
Powder Coat Std. Colors
Black, Red Baron, Crystal White, PO Blue, Yellow

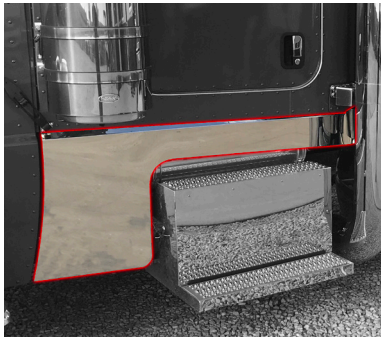


PETERBILT

TRUCK MFG	PRODUCT FAMILY		PRODUCT NAME	FINISH
Peterbilt	1	Seat Base Adapter	99 8" OEM / National & Knedler	001 * Billet Aluminum 11
			10" Bostrom Wide Ride -- Seats Inc Legacy LoPro (Seat Build Date Pre - July 1, 2018)	002 * Chrome 12
			10" Seats Inc Legacy Gold / Silver	003 * Gloss Black 15
			10" National Seating Series 2000 Ultra Ride	006 Red Baron 16
			12" Sears Atlas	004 Crystal White 17
			12" Seats Inc Legacy LoPro (Seat Build Date Post-July 1, 2018)	008 PO Blue 18
			12" Seats Inc. Legacy Gold/Silver Series for Peterbilt 579	010 Yellow 19
			12" Seats Inc. Legacy Lo for Peterbilt 579 (Seat with Post July 1, 2018 Build Date)	011
			12" Sears Atlas for Peterbilt 579	012
			12" Seats Inc. Legacy Lo for Peterbilt 579 (Seat with Pre July 1, 2018 Build Date)	013
			14" National Lo Profile Seat Base	005

* Stocked Finish

CAB & COWL PANELS



FITMENT:

389

FINISH OPTIONS:

#8 304 Non-Directional Polished Stainless Steel

FYI:

If glider has DPF Box the cab & cowl on that size panel will be a 2 piece.

Each Cab/Cowl Set has (22) 3/4" Holes on Bottom Flange

MFG	PRODUCT FAMILY	PRODUCT NAME	EXHAUST	
			AFTER MARKET	STOCK
Peterbilt	1 389 Glider Cab & Cowl w/ 2-Into-1	71 D: One Piece Cab/Cowl with 2-Into-1 Bend -- P: One Piece Cab/Cowl with 2-Into-1 Bend - 3-1/2" Tall	001	050
		D: One Piece Cab/Cowl with 2-Into-1 Bend -- P: One Piece Cab/Cowl with 2-Into-1 Bend - 4-1/2" Tall	002	051
		D: One Piece Cab/Cowl with 2-Into-1 Bend -- P: One Piece Cab/Cowl with 2-Into-1 Bend - 5-1/2" Tall	003	052
	389 Glider Cab Panel Only w/ Stock Cows	D: Cab Only Panel - P-Side - Cab Only Panel - 3-1/2" Tall	015	055
		D: Cab Only Panel - P-Side - Cab Only Panel - 4-1/2" Tall	016	056
		D: Cab Only Panel - P-Side - Cab Only Panel - 5-1/2" Tall	017	057
	2015-2018 389 DEF Cab & Cowl w/ 2-into-1	D: One Piece Cowl with 2-Into-1 Bend - P: Two Piece Across Cab Panel and Under Mount Cowl - 3-1/2" Tall	020	060
		D: One Piece Cowl with 2-Into-1 Bend - P: Two Piece Across Cab Panel and Under Mount Cowl - 4-1/2" Tall	021	061
		D: One Piece Cowl with 2-Into-1 Bend - P: Two Piece Across Cab Panel and Under Mount Cowl - 5-1/2" Tall	022	062
	2015-2018 389 DEF Cab Panel Only w/ Stock Cows	D: Cab Only Panel - P-Side - Cab Only Panel - 3-1/2" Tall	025	065
		D: Cab Only Panel - P-Side - Cab Only Panel - 4-1/2" Tall	026	066
		D: Cab Only Panel - P-Side - Cab Only Panel - 5-1/2" Tall	027	067
	2019 389 DEF Cab & Cowl w/ 2-Into-1	D: One Piece Cowl with 2-Into-1 Bend - P: Two Piece Across Cab Panel and Under Mount Cowl - 3-1/2" Tall	030	070
		D: One Piece Cowl with 2-Into-1 Bend - P: Two Piece Across Cab Panel and Under Mount Cowl - 4-1/2" Tall	031	071
		D: One Piece Cowl with 2-Into-1 Bend - P: Two Piece Across Cab Panel and Under Mount Cowl - 5-1/2" Tall	032	072
	2019 389 DEF Cab Panel Only with Stock Cows	D: Cab Only Panel - P-Side - Cab Only Panel - 3-1/2" Tall	035	075
		D: Cab Only Panel - P-Side - Cab Only Panel - 4-1/2" Tall	036	076
		D: Cab Only Panel - P-Side - Cab Only Panel - 5-1/2" Tall	037	077

* Stocked Finish

SLEEPER PANELS

FITMENT:

36/44" • 63/72"
48/58" • 70/78"

FINISH OPTIONS:

#8 304 Non-Directional Polished Stainless Steel

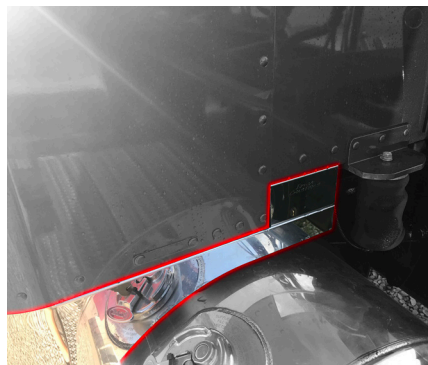
FYI:

63" / 72" Sleeper Panel Set - (42) 3/4" Light Holes

48"/58" Sleeper Panel Set - (44) 3/4" Light Holes

36"/44" Sleeper Panel Set - (36) 3/4" Light Holes

70"/78" Sleeper Panel Set - (36) 3/4" Light Holes



MFG	PRODUCT FAMILY	PRODUCT NAME	FINISH		
Peterbilt	1	Sleeper Panel	70	*#8 304 Non-Directional Polished Stainless Steel	14
		Front and Rear Wrap	63"/72" Sleeper with 3-1/2" Drop	001	
			63"/72" Sleeper with 4-1/2" Drop	003	
			63"/72" Sleeper with 5-1/2" Drop	005	
		Front and Rear Wrap	48"/58" Sleeper with 3-1/2" Drop	020	
			48"/58" Sleeper with 4-1/2" Drop	022	
			48"/58" Sleeper with 5-1/2" Drop	024	
		Front and Rear Wrap	36"/44" Sleeper with 3-1/2" Drop	040	
			36"/44" Sleeper with 4-1/2" Drop	042	
			36"/44" Sleeper with 5-1/2" Drop	044	
		Front Wrap Only	70"/78" Sleeper with 2" Extensions - 3-1/2" Drop	060	
			70"/78" Sleeper with 2" Extensions - 4-1/2" Drop	062	
			70"/78" Sleeper with 2" Extensions - 5-1/2" Drop	064	
		Front Wrap Only	70"/78" Sleeper with 12" Extensions - 3-1/2" Drop	080	
			70"/78" Sleeper with 12" Extensions - 4-1/2" Drop	082	
			70"/78" Sleeper with 12" Extensions - 5-1/2" Drop	084	

* Stocked Finish

SHOCK BOX COVERS

Iowa Customs Ghost Mount Internal structure is easily installed without drilling any holes or double sided tape. The paintable smooth aluminum or #8 304 Non-Directional Polished Stainless Steel box covers the sleeper shock suspension. Clean finished look when installed with our sleeper air bag covers.

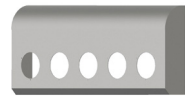
FITMENT:

Peterbilt
- 379, 386 & 389

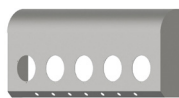
FINISH & DESIGN:

Round top Design -
Smooth Aluminum Only

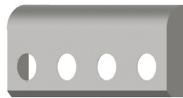
45 Degree Top Design -
#8 304 Non-Directional
Polished Stainless Steel



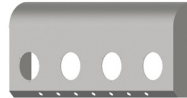
(5) - 4 inch
light holes
001



(5) - 4 inch light
holes with 7 bullets
002



(4) - 4 inch
light holes
003



(4) - 4 inch light
holes with 7 bullets
004



(10) 3/4" light holes
on 45 degree face
005



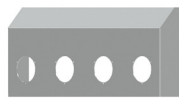
(7) 3/4" light holes
on 45 degree face
007



Blank
008



(5) - 4 inch
light holes
021



(4) - 4 inch
light holes
022



TRUCK MFG		PRODUCT FAMILY		PRODUCT NAME		FINISH	
Peterbilt	1	Shock Box Covers	72			*#8 304 Non-Directional Polished Stainless Steel	14
		Round Top Design		Round Top Design with (5) 4" Lights on Face Only	001	Smooth Aluminum	21
				Round Top Design with (5) 4" Lights on Face and (7) 3/4" Lights on 45 Degree Flange	002		
				Round Top Design with (4) 4" Lights on Face Only	003		
				Round Top Design with (4) 4" Lights on Face and (7) 3/4" Lights on 45 Degree Flange	004		
				Round Top Design with (10) 3/4" Lights on Face Only	005		
				Round Top Design with (10) 3/4" Lights on Face and (7) 3/4" Lights on 45 Degree Flange	006		
				Round Top Design with (7) 3/4" Lights on 45 Degree Flange Only	007		
				Round Top Design - Blank with No Light Holes	008		
		45 Degree Top Design					
				45 Degree Top Design with No Holes	020		
				45 Degree Top Design with (5) 4" Lights on Face	021		
				45 Degree Top Design with (4) 4" Lights on Face	022		

* Stocked Finish

SLEEPER AIR BAG COVERS

Iowa Customs Sleeper Air Bag Covers are specifically designed to cover up the air bags on your sleeper!



Formed Air Bag Cover
(Polished Stainless Steel)

FITMENT:

Peterbilt 389

FINISH OPTIONS:

- #8 304 Non-Directional Polished Stainless Steel
- Smooth Aluminum

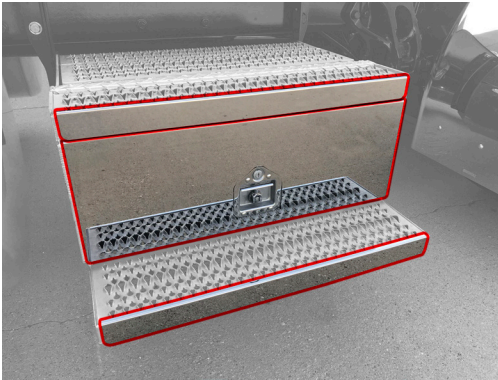


TRUCK MFG		PRODUCT FAMILY		PRODUCT NAME		FINISH	
Peterbilt	1	Air Bag Covers	81	Peterbilt 386 & 389 Formed Air Bag Cover - Sold As Pair	001	*8 304 Non-Directional Polished Stainless Steel	14
						* Smooth Aluminum	21

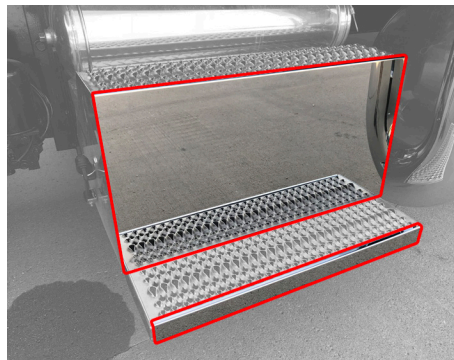
* Stocked Finish

TOOL & BOOT BOX COVERS

Iowa Customs 18GA #8 304 Non-Directional Polished Stainless Steel Boot Box Covers are expertly manufactured to create a superior fit. Four Configurations Available - Peterbilt Battery Box, Tool/Boot Box, 2015-18 DPF and 2019+ DPF Step Box Center Panels.



Tool/Boot Box Kit



Battery Box Combo Step Kit



FITMENT:

- Peterbilt 379
- Peterbilt 389
- Peterbilt 389 Glider

FINISH OPTIONS:

- #8 304 Non-Directional Polished Stainless Steel

FYI:

Battery Box: (1) Bottom Step Trim & (1) Center Panel Which Extends to Top Step.

Tool/Boot Box- (2) Step Trim & (1) Center Panel with Handle Cutout

2015-18 & DPF Center Panels & (1) Bottom Step Trim

2019 - & DPF Center Panel & (1) Bottom Step Trim

TRUCK MFG		PRODUCT FAMILY		PRODUCT NAME		FINISH	
Peterbilt	1	Tool, Boot and Battery Box Covers	73	379/389 Boot/Tool Box Kit - (1) Long Step Trim, (1) Short Step Trim & (1) Tool Box Handle Cutout Center Panel	001	*#8 304 Non-Directional Polished Stainless Steel	14
				379/389 Battery Box Kit - (1) Step Trims & (1) Combo Step Center Panel	002		
				389 Passenger 2015-2018 DPF Cover Kit - (1) Step Trim & (1) Center Panel	003		
				389 Passenger 2019+ DPF Cover Kit - (1) Step Trim & (1) Center Panel	004		

* Stocked Finish

WINDOW CHOPS

Want that Chopped Top Look? Iowa Customs Window Chops create that look! Design for use on trucks with cab mounted mirrors. Our window chops are available in smooth aluminum or #8 304 Non-Directional Polished Stainless Steel and sold in pairs.

FITMENT:

Peterbilt 389

FINISH OPTIONS:

Smooth Aluminum

#8 304 Non-Directional Polished Stainless Steel



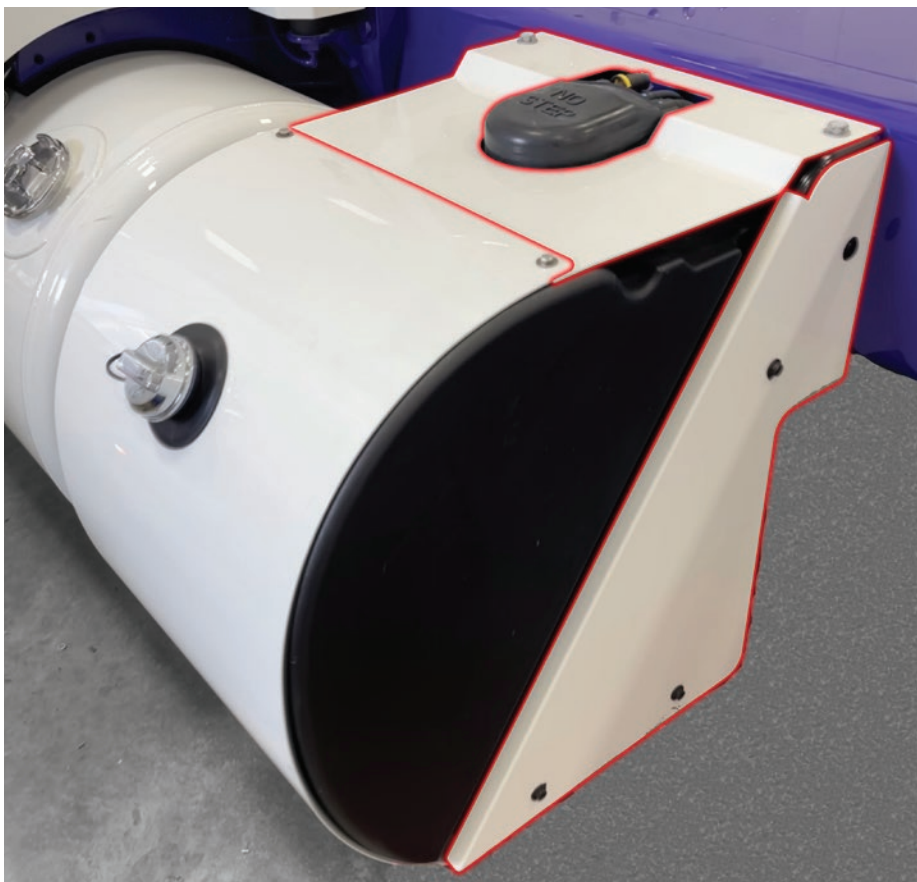
PETERBILT

TRUCK MFG	PRODUCT FAMILY		PRODUCT NAME		FINISH		
Peterbilt	1	Window Chops	80	4" Window Chops	001	*8 304 Non-Directional Polished Stainless Steel	14
				5" Window Chops	002	*Smooth Aluminum	21
				6" Window Chops	003		
				7" Window Chops	004		
				8" Window Chops	005		

* Stocked Finish

DEF TANK ACCESSORIES

Iowa Customs' DEF Bracket Cover System covers the OEM DEF Tank Brackets allowing you to further enhance the look of your truck. Expertly crafted from 16GA #8 304 Non-Directional Polished Stainless Steel, the DEF Bracket Covers and DEF Tank Top mount directly to the brackets utilizing the OEM hardware. Depending on the location of your DEF tank, the optional upper tank cover helps further cover the DEF Tank and its components to further complete the look.



(Product shown has been painted)

FITMENT:

- Peterbilt 389
- 2022 or Newer
- Side Covers Fit Medium and Large DEF Tanks
- Top Cover Fits Large Tanks Only

FINISH OPTIONS:

- 16GA #8 304 Non-Directional Polished Stainless Steel

FYI:

- DEF Side Covers are sold in pairs - (1) Left and (1) Right
- DEF Top Cover Sold Separately
- Uses OEM Hardware



Part Number Example: IC168001-14 - Peterbilt DEF Tank Side Panels in #8 304 Non-Directional Polished Stainless Steel Finish

TRUCK MFG		PRODUCT FAMILY		PRODUCT NAME		FINISH	
Peterbilt	1	DEF Tank Accessories	68	2022 Peterbilt DEF Tank Medium & Large - Side Covers	001	#8 304 Non-Directional Polished Stainless Steel	14
				2022 Peterbilt DEF Tank Large - Top Cover	002		

* Stocked Finish

33" LIGHT BARS

The Iowa Customs Rear Light Bars are manufactured from either 16ga #8 304 Non-Directional Polished Stainless Steel or Smooth Aluminum with a Gasketed, Rear Back Plate and our integrated gussets. Multiple designs are available!



FITMENT:

Universal

FINISH OPTIONS:

- #8 304 Non-Directional Polished Stainless Steel
- Smooth Aluminum

FYI:

All Rear Light Bars DO NOT come with the lights.



TRUCK MFG		PRODUCT FAMILY		PRODUCT NAME		FINISH	
Universal	9	Rear Light Bars & Center Panels	83	33" x 8-1/2" Light Bar with (4) 4" Round Light Holes	025	* #8 304 Non-Directional Polished Stainless Steel	14
				33" x 8-1/2" Light Bar with (2) 4" Round Light Holes and Trailer Air with (1) 7-Way Hookup	026	* Smooth Aluminum	21
				33" x 8-1/2" Light Bar with (4) 6-1/2" x 2-1/4" Oval Lights	027		
				33" x 8-1/2" Light Bar with (4) 6-1/2" x 2-1/4" Oval Lights and Trailer Air with (1) 7-Way Hookup	028		

* Stocked Finish

96" LIGHT BAR

Iowa Customs 96" Light Bars are expertly crafted and manufactured from 14GA #8 304 Non-Directional Polished Stainless Steel. These are engineered with internal structure to help eliminate fatigue areas. Includes Gasketed Rear Access Panel, Gussets and Integrated Flap Hangers



FITMENT:

Universal

FINISH OPTIONS:

#8 304 Non-Directional Polished Stainless Steel

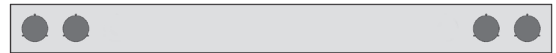
FYI:

Footprint: 96" x 8 1/2" x 3"

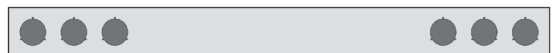
Custom Light

Configurations Available

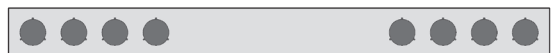
AVAILABLE STOCK CONFIGURATIONS:



96" Light Bar with (4) 4" Round Light Holes



96" Light Bar with (6) 4" Round Light Holes



96" Light Bar with (8) 4" Round Light Holes



96" Light Bar with (13) 4" Round Light Holes

TRUCK MFG		PRODUCT FAMILY		PRODUCT NAME		FINISH	
Universal	9	Rear Light Bars & Center Panels	83	96" x 8-1/2" Light Bar with (13) 4" Round Light Holes	040	* #8 304 Non-Directional Polished Stainless Steel	14
				96" x 8-1/2" Light Bar with (8) 4" Round Light Holes	041		
				96" x 8-1/2" Light Bar with (6) 4" Round Light Holes	042		
				96" x 8-1/2" Light Bar with (4) 4" Round Light Holes	043		

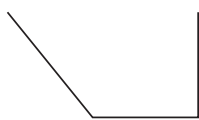
* Stocked Finish

DECK PLATE ACCESSORIES

The Iowa Customs deck plate accessories are built using top-of-the-line materials. All of our accessories come complete, which means all mounting, back plates and mounting flanges are included!

AVAILABLE STOCK CONFIGURATIONS & PROFILES:

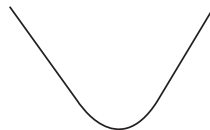
Recessed Airline Box Profiles:



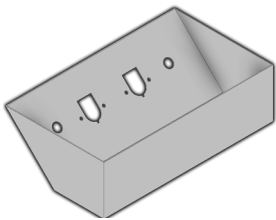
45 Degree Front



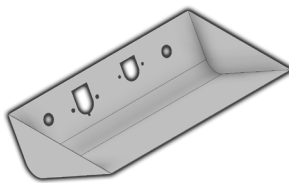
7 Design



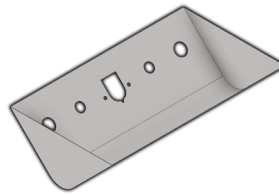
Radius Bottom



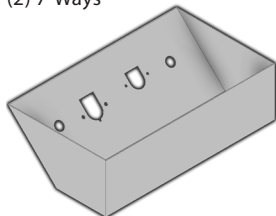
45 Degree Design: Trailer Air & (2) 7-Ways



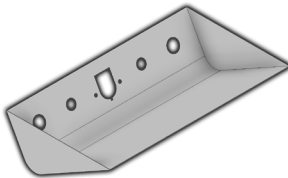
7 Design: Trailer Air, (1) 7-Way & (1) 4/6-Way



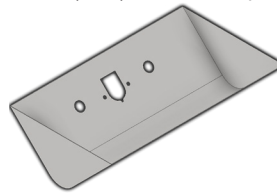
Radius Bottom Design: Trailer Air, (1) 7-Way & Hydraulic Hookups



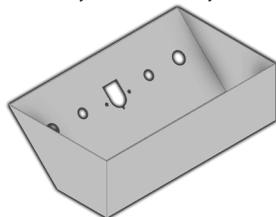
45 Degree Design: Trailer Air, (1) 7-Way & (1) 4/6-Way



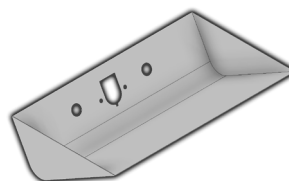
7 Design: Trailer Air, (1) 7-Way & Hydraulic Hookups



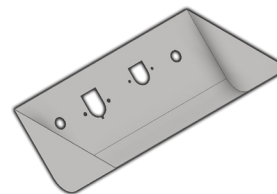
Radius Bottom Design: Trailer Air & (1) 7-Way



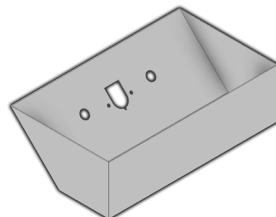
45 Degree Design: Trailer Air, (1) 7-Way & Hydraulic Hookups



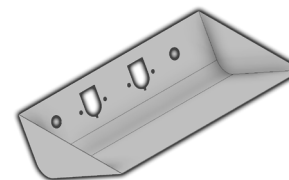
7 Design: Trailer Air & (1) 7-Way



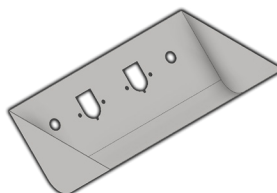
Radius Bottom Design: Trailer Air, (1) 7-Way & (1) 4/6-Way



45 Degree Design: Trailer Air & (1) 7-Way



7 Design: Trailer Air & (2) 7-Ways



Radius Bottom: Trailer Air & (2) 7-Ways

FITMENT:

Universal

FINISH OPTIONS:

- #8 304 Non-Directional Polished Stainless Steel
- Smooth Aluminum

ACCESSORY OPTIONS:

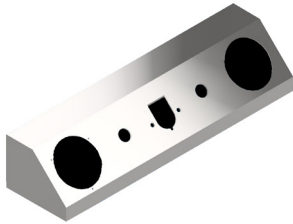
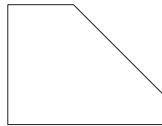
- On-top Airline Box
- Recessed Airline Box:
 - 45 Degree Front
 - Radius Bottom
 - 7 Series Design

Have an existing deck plate? No problem!

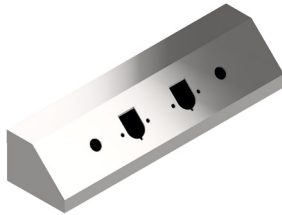
Our Recessed Airline Boxes come with a flange, covering up the cut-out in the top of the deck plate for a complete and finished look!



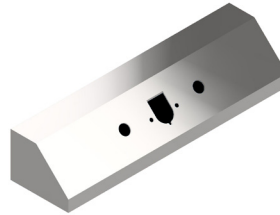
On-Top Airline Box Profiles:



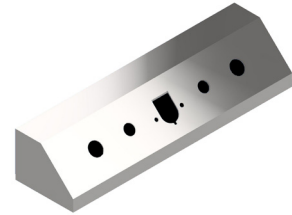
On Top ALB Design: Trailer Air, (1) 7-Way & (2) 4" Holes



On Top ALB Design: Trailer Air & (2) 7-Ways



On Top ALB Design: Trailer Air & (1) 7-Way



On Top ALB Design: Trailer Air, (1) 7-Way & (2) hydraulic hook-ups

TRUCK MFG		PRODUCT FAMILY		PRODUCT NAME	FINISH		
Universal	9	Deck Plate Accessories	87	On-Top Airline Box Blank - No Holes	000	#8 304 Non-Directional Polished Stainless Steel	14
				On-Top Airline Box with Trailer Air, (1) 7-Way & (1) 4/6 - Way Hook - Up	001	* Smooth Aluminum	21
				On-Top Airline Box with Trailer Air and (1) 7-Way	002		
				On-Top Airline Box with Trailer Air and (2) 7-Way's	003		
				On-Top Airline Box with Trailer Air, Hydraulic Hook-Ups and (1) 7-Way	004		
				On-Top Airline Box with Trailer Air, (1) 7-Way and (2) 4" Light Holes	005		
				On-Top Airline Box with Trailer Air, (2) 7-Way and (2) 4" Light Holes	006		
				Recessed Airline Box - 45 Degree Front with Flange - Trailer Air and (1) 7-Way Hook-Up	007		
				Recessed Airline Box - 45 Degree Front with Flange - Trailer Air and (2) 7-Way Hook - Ups	008		
				Recessed Airline Box - 45 Degree Front with Flange - Trailer Air, (1) 7-Way & (1) 4/6-Way Hook-Up	009		
				Recessed Airline Box - 45 Degree Front with Flange - Hydraulic, Trailer Air, (1) 7-Way Hook-Up	010		
				Recessed Airline Box - Radius Bottom with Flange - Trailer Air and (1) 7-Way Hook-Up	011		
				Recessed Airline Box - Radius Bottom with Flange - Trailer Air and (2) 7-Way Hook - Ups	012		
				Recessed Airline Box - Radius Bottom with Flange - Trailer Air, (1) 7-Way & (1) 4/6-Way Hook-Up	013		
				Recessed Airline Box - Radius Bottom with Flange - Hydraulic, Trailer Air, (1) 7-Way Hook-Up	014		
				Recessed Airline Box - Series "7" with Flange - Trailer Air and (1) 7-Way Hook-Up	015		
				Recessed Airline Box - Series "7" with Flange - Trailer Air and (2) 7-Way Hook - Ups	016		
				Recessed Airline Box - Series "7" with Flange - Trailer Air, (1) 7-Way & (1) 4/6-Way Hook-Up	017		
				Recessed Airline Box -Series "7" with Flange - Hydraulic, Trailer Air, (1) 7-Way Hook-Up	018		

* Stocked Finish

FRAME / BUMPER LIGHTS

The patented Frame/Bumper Light is a dual-sided, eight-pound, triple chrome-plated, universal mounted light. This product comes with all mounting hardware, your choice of LED color and lens color and requires no drilling for installation!

FITMENT:

Universal

FINISH OPTIONS:

Chrome



TRUCK MFG		PRODUCT FAMILY		PRODUCT NAME		FINISH	
Universal	9	Frame Light	94	Frame Light with Amber LEDs and Amber Lens	001	* Chrome	11
				Frame Light with Amber LEDs and Clear Lens	002		
				Frame Light with Red LEDs and Red Lens	003		
				Frame Light with Red LEDs and Clear Lens	004		
				Frame Light with Amber LED Clear Lens Front and Red LED Clear Lens Back	005		
				Frame Light with Amber LED Amber Lens Front with Red LED Red Lens Back	006		

* Stocked Finish

FLAP ACCENTS

Iowa Customs 14GA #8 304 Non-Directional Polished Stainless Steel Anti-Sail Brackets are engineered with the top flap mount for an integrated and sleek design.



FITMENT:

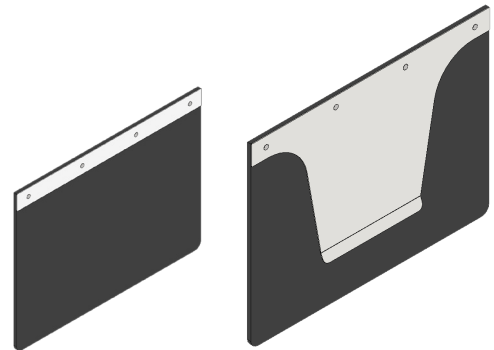
Universal

FINISH OPTIONS:

#8 304 Non-Directional Polished Stainless Steel

FYI:

Fits any 24" Wide Flap**
Includes Polished Stainless Steel Hardware



U
N
I
V
E
R
S
A
L

TRUCK MFG		PRODUCT FAMILY		PRODUCT NAME		FINISH	
Universal	9	Anti-Sail Brackets	74	14" Anti-Sail w/2"x24" Integrated Flap Accents	001	*#8 304 Non-Directional Polished Stainless Steel	14
				2" x 24" Top Mud Flap Accents	010		

* Stocked Finish

FLAP WEIGHTS

Our patented Curl Free Flap Weight System, made from 16ga #8 304 Non-Directional Polished Stainless Steel, eliminates the dreaded mud flap curl.

The system's double bend design with an interlocking back plate assures years of use and comes with all polished stainless steel mounting hardware!

FITMENT:

Universal

FINISH OPTIONS:

#8 304 Non-Directional Polished Stainless Steel



TRUCK MFG		PRODUCT FAMILY		PRODUCT NAME		FINISH	
Universal	9	Flap Weights	89	3" x 12" Tapered Design - Fits 0"-1/2" Thick Flap	001	* #8 304 Non-Directional Polished Stainless Steel	14
				3" x 14" Tapered Design - Fits 0"-1/2" Thick Flap	002		
				3" x 16" Tapered Design - Fits 0"-1/2" Thick Flap	003		
				3" x 18" Tapered Design - Fits 0"-1/2" Thick Flap	004		
				3" x 20" Tapered Design - Fits 0"-1/2" Thick Flap	005		
				3" x 24" Tapered Design - Fits 0"-1/2" Thick Flap	006		
				4" x 12" Tapered Design - Fits 0"-1/2" Thick Flap	007		
				4" x 14" Tapered Design - Fits 0"-1/2" Thick Flap	008		
				4" x 16" Tapered Design - Fits 0"-1/2" Thick Flap	009		
				4" x 18" Tapered Design - Fits 0"-1/2" Thick Flap	010		
				4" x 20" Tapered Design - Fits 0"-1/2" Thick Flap	011		
				4" x 24" Tapered Design - Fits 0"-1/2" Thick Flap	012		
				5" x 18" Tapered Design - Fits 0"-1/2" Thick Flap	013		
				5" x 24" Tapered Design - Fits 0"-1/2" Thick Flap	014		

* Stocked Finish

PRODUCT NAME	
6" x 24" Tapered Design - Fits 0"-1/2" Thick Flap	015
* 7" x 24" Tapered Design - Fits 0"-1/2" Thick Flap	016
* 8" x 24" Tapered Design - Fits 0"-1/2" Thick Flap	017
* 9" x 24" Tapered Design - Fits 0"-1/2" Thick Flap	018
2" x 12" Rectangle Design - Fits 0"-1/2" Thick Flap	025
2" x 14" Rectangle Design - Fits 0"-1/2" Thick Flap	026
2" x 16" Rectangle Design - Fits 0"-1/2" Thick Flap	027
2" x 18" Rectangle Design - Fits 0"-1/2" Thick Flap	028
2" x 20" Rectangle Design - Fits 0"-1/2" Thick Flap	029
2" x 24" Rectangle Design - Fits 0"-1/2" Thick Flap	030
3" x 12" Rectangle Design - Fits 0"-1/2" Thick Flap	031
3" x 14" Rectangle Design - Fits 0"-1/2" Thick Flap	032
3" x 16" Rectangle Design - Fits 0"-1/2" Thick Flap	033
3" x 18" Rectangle Design - Fits 0"-1/2" Thick Flap	034
3" x 20" Rectangle Design - Fits 0"-1/2" Thick Flap	035
3" x 24" Rectangle Design - Fits 0"-1/2" Thick Flap	036
4" x 12" Rectangle Design - Fits 0"-1/2" Thick Flap	037
4" x 14" Rectangle Design - Fits 0"-1/2" Thick Flap	038
4" x 16" Rectangle Design - Fits 0"-1/2" Thick Flap	039
4" x 18" Rectangle Design - Fits 0"-1/2" Thick Flap	040
4" x 20" Rectangle Design - Fits 0"-1/2" Thick Flap	041
4" x 24" Rectangle Design - Fits 0"-1/2" Thick Flap	042
5" x 18" Rectangle Design - Fits 0"-1/2" Thick Flap	043
5" x 24" Rectangle Design - Fits 0"-1/2" Thick Flap	044
6" x 24" Rectangle Design - Fits 0"-1/2" Thick Flap	045
* 7" x 24" Rectangle Design - Fits 0"-1/2" Thick Flap	046
* 8" x 24" Rectangle Design - Fits 0"-1/2" Thick Flap	047
* 9" x 24" Rectangle Design - Fits 0"-1/2" Thick Flap	048
3" x 18" Tapered Design - Fits 1/2"-3/4" Thick Flap	080
3" x 24" Tapered Design - Fits 1/2"-3/4" Thick Flap	081
4" x 18" Tapered Design - Fits 1/2"-3/4" Thick Flap	082
4" x 24" Tapered Design - Fits 1/2"-3/4" Thick Flap	083

PRODUCT NAME	
5" x 18" Tapered Design - Fits 1/2"-3/4" Thick Flap	084
5" x 24" Tapered Design - Fits 1/2"-3/4" Thick Flap	085
6" x 24" Tapered Design - Fits 1/2"-3/4" Thick Flap	086
* 7" x 24" Tapered Design - Fits 1/2"-3/4" Thick Flap	087
* 8" x 24" Tapered Design - Fits 1/2"-3/4" Thick Flap	088
* 9" x 24" Tapered Design - Fits 1/2"-3/4" Thick Flap	089
3" x 18" Rectangle Design - Fits 1/2"-3/4" Thick Flap	095
3" x 24" Rectangle Design - Fits 1/2"-3/4" Thick Flap	096
4" x 18" Rectangle Design - Fits 1/2"-3/4" Thick Flap	097
4" x 24" Rectangle Design - Fits 1/2"-3/4" Thick Flap	098
5" x 18" Rectangle Design - Fits 1/2"-3/4" Thick Flap	099
5" x 24" Rectangle Design - Fits 1/2"-3/4" Thick Flap	100
6" x 24" Rectangle Design - Fits 1/2"-3/4" Thick Flap	101
* 7" x 24" Rectangle Design - Fits 1/2"-3/4" Thick Flap	102
* 8" x 24" Rectangle Design - Fits 1/2"-3/4" Thick Flap	103
* 9" x 24" Rectangle Design - Fits 1/2"-3/4" Thick Flap	104

* Sold Individually



GLOW KITS



Our patented Glow Kits create an even under glow...no "hot spots" here! The kits utilize 3/4" mini button lights and come in a variety of kits for any application!



FITMENT:

Universal

FYI:

#8 304 Non-Directional Polished Stainless Steel

All Sleeper Only Kits and Sleeper and Cab Kits come with glow kit brackets and mounting hardware. Lights not included.

Lights

All Frame Kits come with glow kits brackets and frame clamps.

Additional frame clamps are sold in pairs.

How Many Lights Needed?

- 48" Cab & Sleeper Kit - (42) 3/4" Lights
- 48" Sleeper Only Kit - (30) 3/4" Lights
- 63" Cab & Sleeper Kit - (48) 3/4" Lights
- 63" Sleeper Only Kit - (36) 3/4" Lights
- 12" Section = (3) 3/4" Lights
- 24" Section = (6) 3/4" Lights
- 16' Frame Kit - (48) 3/4" Lights
- 20' Frame Kit - (60) 3/4" Lights
- 24' Frame Kit - (72) 3/4" Lights



TRUCK MFG		PRODUCT FAMILY		PRODUCT NAME		FINISH	
Universal	9	Glow Kits	95	Glow Kit for 48 Inch Sleeper and Cab	999	*#8 304 Non-Directional Polished Stainless Steel	14
				Glow Kit for 63 Inch & 70 Inch Sleeper and Cab	998		
				Glow Kit for 48 Inch Sleeper Only	997		
				Glow Kit for 63 Inch & 70 Inch Sleeper Only	996		
				Glow Kit for Truck Frame 16ft 8ft of Glow Kit Brackets for Frame Installation on Both Sides of Vehicle	995		
				Glow Kit for Truck Frame 20ft 10ft of Glow Kit Brackets for Frame Installation on Both Sides of Vehicle	994		
				Glow Kit for Truck Frame 24ft 12ft of Glow Kit Brackets for Frame Installation on Both Sides of Vehicle	993		
				12 Inch Glow Kit Section	001		
				24 Inch Glow Kit Section	002		
				Glow Kit Frame Clamps	003		

* Stocked Finish

IFTA PERMIT HOLDER

The 16GA 304 #8 304 Non-Directional Polished Stainless Steel IFTA Permit Holders provide the best way to display your permits. Adhesive Mounting for Universal applications and Flange Mounting Available!



4" x 4" Adhesive



4" x 8" Adhesive



4" x 4" Flange Mount



8" x 13" Adhesive

FITMENT:

Universal

FINISH OPTIONS:

#8 304 Non-Directional Polished Stainless Steel

FYI:

Universal Mount with 3M VHB Adhesives

Flange Mount Available



U
N
I
V
E
R
S
A
L

TRUCK MFG		PRODUCT FAMILY		PRODUCT NAME		FINISH	
Universal	9	IFTA Brackets	85	Universal Mount Permit Holder - 4" x 8" Adhesive Mount - Case of 14	001	*#8 304 Non-Directional Polished Stainless Steel	14
				Universal Mount IFTA Permit Holder - 4" x 4" Adhesive Mount - Case of 14	002		
				Universal Mount IFTA Permit Holder - 4" x 4" Bolt Mount - Case of 14	003		
				Universal Mount IFTA Holder- 8" x 13" Adhesive Mount - Each	004		

* Stocked Finish

IN-FRAME DECK PLATES

Our patented In-Frame Deck Plate System is flush-mounted in between the frame for that super smooth look. Installation is simple with our revolutionary mounting clip design!

We stock 36" - 96" deck plates, but if you're looking for a custom length or configuration, just contact us!



FITMENT:

Inside Frame Measurement of 27"

FINISH OPTIONS:

- #8 304 Non-Directional Polished Stainless Steel
- Smooth Aluminum
- Aluminum Diamond Tread

FYI:

Only 36" - 96" deck plates are stocked. Custom deck plates are built to your specifications.

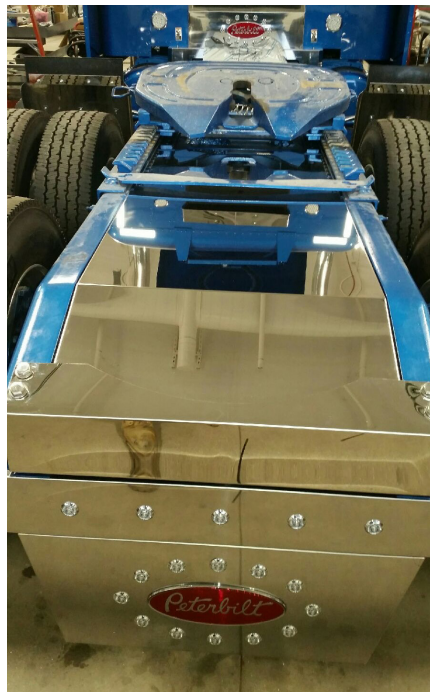
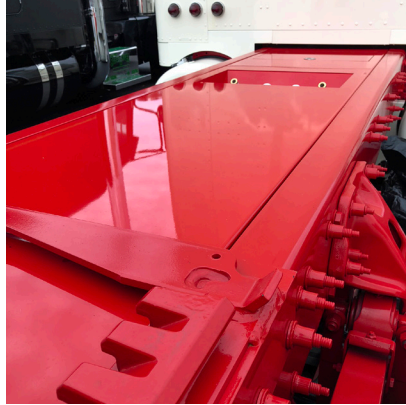


STOCK IN-FRAME DECK PLATE LENGTHS

TRUCK MFG		PRODUCT FAMILY		PRODUCT NAME		FINISH	
Universal	9	In Frame Deck Plate	93	26-7/8"W x 36"L In-Frame Deck Plate	001	*#8 304 Non-Directional Polished Stainless Steel	14
				26-7/8"W x 48"L In-Frame Deck Plate	002	* Smooth Aluminum	21
				26-7/8"W x 60"L In-Frame Deck Plate	003		
				26-7/8"W x 72"L In-Frame Deck Plate	004		
				26-7/8"W x 84"L In-Frame Deck Plate	005		
				26-7/8"W x 96"L In-Frame Deck Plate	006		

* Stocked Finish

CUSTOM DECK PLATES



CUSTOM DECK PLATE OPTIONS:

One Piece Deck Plate Up To 13'-6"

Finishes:

Smooth Aluminum or #8 304 Non-Directional Polished Stainless Steel

Airline Box Options:

- Mini-Recessed Airline Box
- Recessed Airline Box
- Radius Bottom Airline Box
- On-Top Airline Box

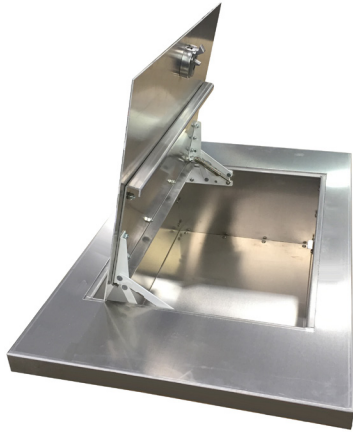
Storage Boxes:

- 14"L x 22"W x 8"H Storage Box with Convenience LED Light
- 28"L x 22"W x 8"H Storage Box with Convenience LED Light



ON-FRAME SECTIONALIZED DECK PLATES

Our patented Sectionalized Deck Plate System allows the mixing and matching of our recessed airline boxes and storage boxes to achieve the ultimate customized design look! This system installs on top of the frame with our patented mounting system for ease of mounting.



FITMENT:

Any truck with an outside frame measurement of 34"

FINISH OPTIONS:

#8 304 Non-Directional Polished Stainless Steel
Smooth Aluminum

SECTIONS AVAILABLE:

12" - 24" Filler
On-Top Airline Box
Recessed Airline Box
14" x 22" Storage Box

TRUCK MFG		PRODUCT FAMILY		PRODUCT NAME		FINISH	
Universal	9	Sectional Deck Plate	91	12" Filler Section	001	#8 304 Non-Directional Polished Stainless Steel	14
				14" Filler Section	002	* Smooth Aluminum	21
				16" Filler Section	003		
				18" Filler Section	004		
				20" Filler Section	005		
				22" Filler Section	006		
				24" Filler Section	007		
				12" On-Top Airline Box	008		
				18" Recessed Airline Box - Trailer Air and (1) 7-Way Hook-Up	009		
				20" Recessed Tool Box	010		
				18" Recessed Air Box - Small Airline Box - Trailer Air and (1) 7-Way	011		
				18" Recessed Airline Box - Trailer Air and (2) 7-Way Hook-Ups	012		
				18" Recessed Airline Box - Trailer Air and (1) 7-Way & (1) 4/6-Way Hook-Ups	013		
				18" Recessed Airline Box - Trailer Air and (1) 7-Way & Hydraulic Hook-Ups	014		

* Stocked Finish

MICROWAVE & INVERTER KIT

Universal Fitment allows installation of a Microwave and Inverter virtually anywhere in your truck. Kit comes with Microwave, Microwave Hanging Bracket, Inverter and Inverter Installation Kit.

FITMENT:

Universal

FINISH OPTIONS:

Gloss Black

KITS INCLUDE:

Includes the following: microwave hanging bracket, microwave, inverter, and inverter installation kit.

Inclusive Design Allows for mounting virtually anywhere!



Inverter Installation Kit



TRUCK MFG		PRODUCT FAMILY		PRODUCT NAME		FINISH	
Universal	9	Microwave Kits	84	Microwave & Inverter Kit	030	*Gloss Black	15

* Stocked Finish

REAR CENTER PANELS

The Iowa Customs Rear Center Panels are expertly manufactured ensuring superior quality. The panels come with our specially designed Gusset System that strengthens the Rear Center Panel along with gasketed back plate to keep the elements out!

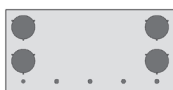


CALIFORNIA STYLE REAR CENTER PANELS – REAR AIRLINE DESIGNS

AVAILABLE IN 16" AND 20"



16" Drop with
(5) 4" Lights



16" Drop with
(5) 3/4" Lights and
(4) 4" Light Holes



16" Drop with
(3) 3/4" Light Holes and
(5) 4" Light Holes



20" Drop with
(5) 3/4" Lights and
(4) 4" Light Holes

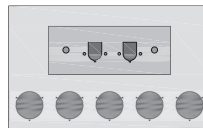
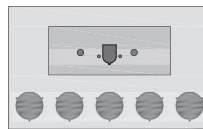


20" Drop with
(5) 4" Lights



20" Drop with
(3) 3/4" Light Holes and
(5) 4" Light Holes

AVAILABLE IN 20"



FITMENT:

Universal

FINISH OPTIONS:

- #8 304 Non-Directional Polished Stainless Steel
- Smooth Aluminum

FYI:

Multiple configuration options available.
All Rear Center Panels DO NOT come with the lights.



TRUCK MFG		PRODUCT FAMILY		PRODUCT NAME		FINISH	
Universal	9	Rear Light Bars & Center Panels	83	33"W x 20" Drop Rear Center Panel With Airline Box - Trailer Air and (1) 7-Way - No Lights	001	* #8 304 Non-Directional Polished Stainless Steel	14
				33"W x 20" Drop Rear Center Panel With Airline Box - Trailer Air and (1) 7-Ways - (5) 4" Round Light Holes	002	* Smooth Aluminum	21
				33"W x 20" Drop Rear Center Panel With Airline Box - Trailer Air and (2) 7-Way - No Lights	003		
				33"W x 20" Drop Rear Center Panel With Airline Box - Trailer Air and (2) 7-Ways - (5) 4" Round Light Holes	004		
				33"W x 20" Drop Rear Center Panel with (4) 4" Round Lights	005		
				33" x 20" Drop Rear Center Panel with (5) 4" Round Lights	006		
				33" x 20" Drop Rear Center Panel with (3) 3/4" Lights and (5) 4" Round Lights	007		
				33" x 20" Drop Rear Center Panel with (5) 3/4" Lights and (4) 4" Round Lights	008		
				33" x 16" Drop Rear Center Panel with (5) 4" Round Lights	009		
				33" x 16" Drop Rear Center Panel with (3) 3/4" Lights and (5) 4" Round Lights	010		
				33" x 16" Drop Rear Center Panel with (5) 3/4" Lights and (4) 4" Round Lights	011		

* Stocked Finish

REVERSE & REAR T-BAR

Rear T-Bars From Iowa Customs are expertly crafted and manufactured from 14GA #8 304 Non-Directional Polished Stainless Steel. Our T-Bars are engineered with internal structure to help eliminate fatigue areas. Includes Gasketed Rear Access Panel, Gussets and Integrated Flap Hangers.

FITMENT:

Universal

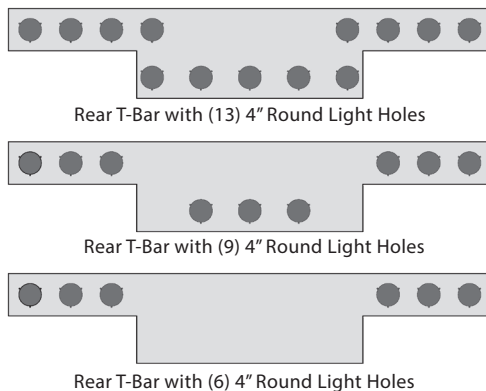
FINISH OPTIONS:

#8 304 Non-Directional Polished Stainless Steel

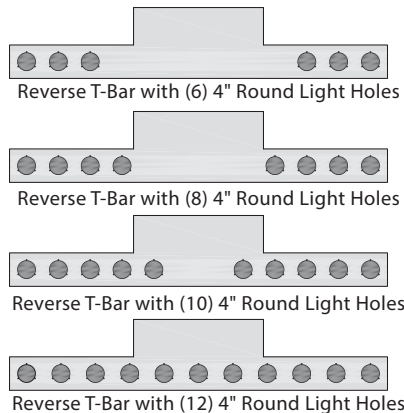
FYI:

Footprint:
96" Long x 18" Tall x 3"
Lights not included
Custom Light
Configurations Available

REAR T-BARS



REVERSE T-BARS



MFG		PRODUCT FAMILY		PRODUCT NAME		FINISH	
Universal	9	Rear T-Bars	75	Rear T-Bar with (13) 4" Round Lights - - 96" x 18" Tall	001	* #8 304 Non-Directional Polished Stainless Steel	14
				Rear T-Bar with (9) 4" Round Lights - - 96" x 18" Tall	002		
				Rear T-Bar with (6) 4" Round Lights - - 96" x 18" Tall	003		
		Reverse T-Bar		Reverse T-Bar with (12) 4" Round Light Holes - 18" Drop x 96" Long	020		
				Reverse T-Bar with (8) 4" Round Light Holes - 18" Drop x 96" Long	021		
				Reverse T-Bar with (6) 4" Round Light Holes - 18" Drop x 96" Long	022		
				Reverse T-Bar with (10) 4" Round Light Holes - 18" Drop x 96" Long	023		

* Stocked Finish

STEP PLATES & INSERTS

Our patented and unique Step Plate System makes creating a custom look easy. Simply mix and match various finishes of both step plates and inserts to create that custom combo!



FITMENT:

Universal

STEP PLATE FINISHES:

Billet Aluminum
Chrome

INSERT FINISHES:

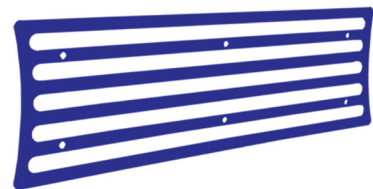
Brushed Stainless Steel
#8 304 Non-Directional
Polished Stainless Steel
Non-painted
Powder Coat Std. Colors



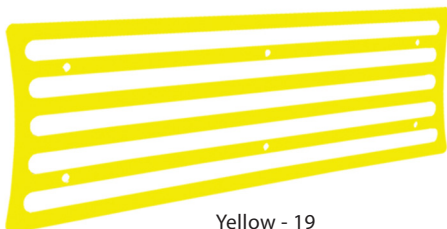
Chrome - 12



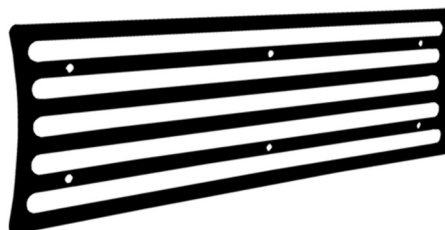
Red Baron - 16



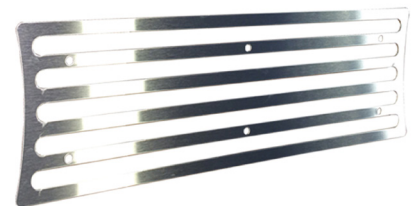
PO Blue - 18



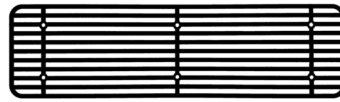
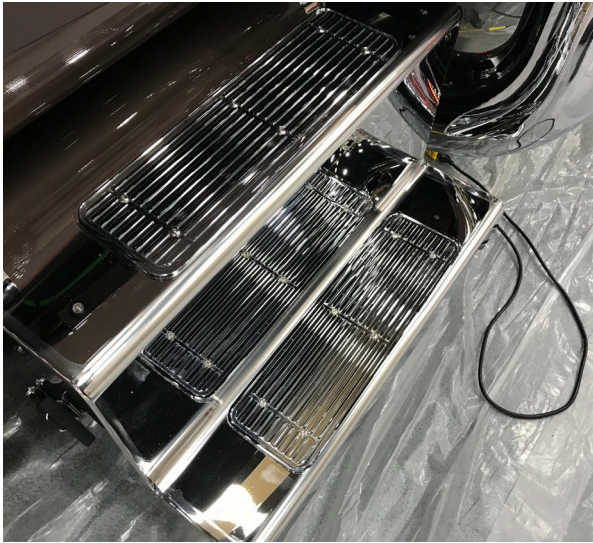
Yellow - 19



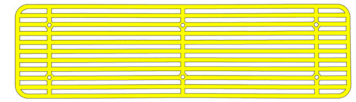
Gloss Black- 15



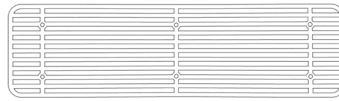
Stainless Steel - 14



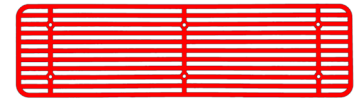
Gloss Black - 15



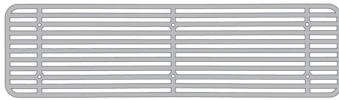
Yellow - 19



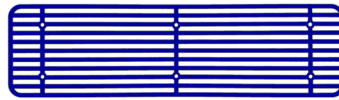
Crystal White - 17



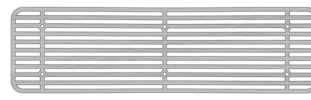
Red Baron - 16



Brushed Stainless Steel- 3



PO Blue - 18



Non- Directional Polished
Stainless Steel - 14



Billet
Aluminum - 11

TRUCK MFG		PRODUCT FAMILY		PRODUCT NAME		FINISH	
Universal	9	Step Plates	97	6" x 12" Step Plate - Series 1 - Concave Ends	001	* Billet Aluminum	11
				6" x 20" Step Plate - Series 1 - Concave Ends	002	* Chrome	12
				6" x 30" Step Plate - Series 1 - Concave Ends	003		
				4" x 20" Step Plate - Series 1 - Concave Ends	004		
				6" x 12" Step Plate - Series 2 - Rectangle	021		
				6" x 20" Step Plate - Series 2 - Rectangle	022		
				6" x 30" Step Plate - Series 2 - Rectangle	023		
				3" x 20" Step Plate - Series 2 - Rectangle	024		

TRUCK MFG		PRODUCT FAMILY		PRODUCT NAME		FINISH	
Universal	9	Step Plate Inserts	96	6" x 12" Step Plate - Concave Ends	001	*Billet Aluminum Finish	11
				6" x 20" Step Plate - Concave Ends	002	*Gloss Black	15
				6" x 30" Step Plate - Concave Ends	003	*Brushed Stainless Steel	13
				4" x 20" Step Plate - Concave Ends	004	*#8 304 Non-Directional Polished Stainless Steel	14
				6" x 12" Step Plate - Series 2 - Rectangle	021	*Red Baron	16
				6" x 20" Step Plate - Series 2 - Rectangle	022	*Crystal White	17
				6" x 30" Step Plate - Series 2 - Rectangle	023	*PO Blue	18
				3" x 20" Step Plate - Series 2 - Rectangle	024	*Yellow	19

* Stocked Finish

STORAGE SOLUTIONS

We have universal storage kit options as well. They come in many different sizes and drawer configurations to fit nearly ANY truck! Available in two different widths: 14" and 15 1/4".



FITMENT:

Universal

FINISH OPTIONS:

Brushed Stainless Steel
Powder Coat Black

CONFIGURATIONS:

- 2-Drawers -
-18-1/2"L x 15-1/4"W x 14"H
- 3-Drawers
-18-1/2"L x 14"W x 21"H
- 3-Drawers
-18-1/2"L x 14"W x 24"H
- 4-Drawers
-18-1/2"L x 15-1/4"W x 29"H
- 5-Drawers
-18-1/2"L x 14"W x 38"H
- 5-Drawers with Tabletop
- 18-1/2"L x 14"W x 38"H



TRUCK MFG	PRODUCT FAMILY	PRODUCT NAME	FINISH	
Universal	9	Storage Solutions & Kits 90	3-Drawer Storage Solution - 14"W x 24" T	004 * Brushed Stainless Steel 13
			5-Drawer Storage Solution - 14"W x 38" T	006 * Gloss Black 15
			5-Drawer Storage Solution with Table Top - 14"W x 38" T	007
			1-Drawer Storage Solution - 15-1/4"W x 6-3/8" T	009
			1-Drawer Storage Solution - 15-1/4"W x 10" T	016
			2-Drawer Storage Solution - 15-1/4"W x 14" T	010
			3-Drawer Storage Solution - 15-1/4"W x 21" T	011
			3-Drawer Storage Solution - 15-1/4"W x 24" T	012
			4-Drawer Storage Solution - 15-1/4"W x 29-1/2" T	013

* Stocked Finish

ON-TOP DECK PLATE

Universal On-Top Deck Plates by Iowa Customs are master crafted for superior fit ability and to mount to virtually any application. Our top quality materials ensure years of maintenance free use.



FITMENT:

Universal

FINISH OPTIONS:

#8 304 Non-Directional Polished Stainless Steel

FYI:

- Fits Virtually on Any Truck
- Stocked in 3' to 8' sections
- Custom Configurations Available



U
N
I
V
E
R
S
A
L

TRUCK MFG		PRODUCT FAMILY		PRODUCT NAME			FINISH	
Universal	9	On-Top Deck Plate	92	36" On-Frame Deck Plate	001	*#8 304 Non-Directional Polished Stainless Steel	14	
				48" On-Frame Deck Plate	002			
				60" On-Frame Deck Plate	003			
				72" On-Frame Deck Plate	004			
				84" On-Frame Deck Plate	005			
				96" On-Frame Deck Plate	006			

* Stocked Finish

ALABAMA			
Fitzgerald Peterbilt of Birmingham	Birmingham	205-379-8300	www.fitzgeraldpeterbilt.com
Fitzgerald Peterbilt of Huntsville	Madison	256-464-2400	www.fitzgeraldpeterbilt.com
Fitzgerald Peterbilt of Montgomery	Hope Hull	334-245-6500	www.fitzgeraldpeterbilt.com
ARIZONA			
Rush Truck Center - Tucson Location	Tucson	520-205-8500	www.rushtruckcenters.com
ARKANSAS			
Empire Chrome - West Memphis Location	West Memphis	870-735-5033	www.empirechromeshop.com
Peterbilt of Fort Smith	Van Buren	479-632-9140	www.tlgrtrucks.com
CALIFORNIA			
A & L Truck Supply - Bakersfield Location	Bakersfield	661-363-0683	www.aandltrucksupply.com
A & L Truck Supply - Fresno Location	Fresno	559-228-1299	www.aandltrucksupply.com
A & L Truck Supply - Tulare Location	Tulare	559-684-1806	www.aandltrucksupply.com
Coast Counties Truck & Equipment	Salinas	831.758.2441	
Rush Truck Center - Fontana Location	Fontana	909-823-7080	www.rushtruckcenters.com
South Sacramento Parts	Sacramento	916-381-7278	
Vernon Truck Wash	Barstow	760-256-0306	www.truckwashstations.com
COLORADO			
Rush Truck Center - Denver Location	Commerce City	303-292-3170	www.rushtruckcenters.com
Rush Truck Center - Greeley Location	Greeley	970-353-7919	www.rushtruckcenters.com
FLORIDA			
75 Chrome Shop	Wildwood	352-748-0330	www.75chromeshop.com
Raney's Inc.	Ocala	888-888-7990	www.raneys.com
Rush Truck Center - Orlando Location	Orlando	321-221-2300	www.rushtruckcenters.com
GEORGIA			
Peterbilt of Atlanta, LLC	Jackson	404-592-9980	www.peteatlanta.com
IDAHO			
Jackson Group Peterbilt - Idaho Falls Location	Idaho Falls	208-528-0004	www.jgpete.com
Jackson Group Peterbilt Boise	Boise	888-718-9140	www.jgpete.com
Jerome Peterbilt	Jerome	208-644-9000	www.jeromepeterbilt.com
Peterbilt of Caldwell	Caldwell	208-453-7020	
ILLINOIS			
DB Kustom Trucks, Inc.	Antioch	224-788-5055	www.dbkustomtrucks.com
Effingham Chrome Shop	Effingham	217-347-0151	www.truckomat.com
JX Peterbilt - Bloomington	Bloomington	1-800-322-0421	www.jxe.com
JX Peterbilt - Lansing	Lansing	855-355-5505	www.jxe.com
JX Peterbilt - Rockford	Rockford	877-222-0013	www.jxe.com
JX Peterbilt - Wadsworth	West Memphis	1-800-243-7383	www.jxe.com
NCP Customs	Sidney	217-202-8317	www.ncpcustoms.com
Quincy Peterbilt	Quincy	217-214-0100	www.graskpeterbilt.com
INDIANA			
Chrome Dome	Haubstadt	812-937-4060	www.wildweaselchrome.com
Davis Brothers Designs	Owensville	812-874-2248	
JX Peterbilt - Ft Wayne	New Haven	877-493-4300	www.jxe.com
Nationwide Chrome and Customs	Fremont	260-495-0121	www.nationwidesls.com
IOWA			
H D Equipment Inc	Grand Mound	563-547-1895	www.hdequipmentinc.com
Harrison Truck Centers - Elk Run Heights	Elk Run Heights	1-800-582-5789	www.htctrucks.com
Iowa 80 Truckstop	Walcott	563-284-6965	www.iowa80.com
J&T Truck and Trailer Repair	Hubbard	1-800-970-1323	
M43 Chrome Shop	Odebolt	712-668-2878	
McDonald Truck Wash & Chrome Shop	Scranton	712-652-3834	www.mcdonaldtrucksales.com
MHC Kenworth - Des Moines	Des Moines	844-435-5790	www.mhc.com
Mike's Auto Refinishing	Garner	641-923-2741	
Peterbilt of Council Bluffs & Omaha	Council Bluffs	712-325-9700	www.pbtruck.com
Peterbilt of Des Moines	Des Moines	515-967-0355	www.pbtruck.com
Peterbilt of Sioux City	Sioux City	712-252-4566	www.pbtruck.com
Quad City Peterbilt	Davenport	563-391-4300	www.quadcitypete.com
Silver Customs	Marion	319-540-1396	www.silvercustomsonline.com
Storm Lake Truck & Trailer	Storm Lake	712-732-6381	www.stormlaketruckandtrailers.com
The Cedar Rapids Truck Center	Cedar Rapids	319-848-4131	www.cedarrapidstruckcenter.com

KANSAS			
Kansas City Peterbilt	Kansas City	913-441-2888	www.kcpete.com
Peterbilt of Garden City	Garden City	620-277-2646	www.peterbiltofgardencity.com
KENTUCKY			
Martin's Peterbilt - Paintsville Location	Paintsville	606-297-6237	www.martinspeterbilt.com
Martin's Peterbilt - Pikeville Location	Pikeville	606-437-1777	www.martinspeterbilt.com
Martin's Peterbilt of Central Kentucky	Lexington	859-268-0138	www.martinspeterbilt.com
Martin's Peterbilt - London Location	London	606-878-6410	www.martinspeterbilt.com
LOUISIANA			
Kenworth of Louisiana	Gray	985-876-3000	www.kwlouisiana.com
Peterbilt of Louisiana	Baton Rouge	225-273-8300	www.peterbiltofLA.com
MAINE			
HCR Chrome Shop	Bangor	207-922-2728	www.hcrchrome.com
MICHIGAN			
JX Peterbilt - Grand Rapids	Wyoming	1-800-878-3654	www.jxe.com
JX Peterbilt - Kalamazoo	Kalamazoo	844-864-2106	www.jxe.com
V-Max Truck Sales	Zeeland	616-772-1643	www.vmaxtrucks.com
MINNESOTA			
Allstate Peterbilt of Mankato	Mankato	507-519-6180	www.allstatepeterbilttrucks.com
Allstate Peterbilt of Rochester	Stewartville	507-523-2333	www.allstatepeterbilt.com
Allstate Peterbilt of South St. Paul	South St. Paul	651-321-9284	www.allstatepeterbilttrucks.com
Allstate Peterbilt of Winona	Winona	507-858-6267	www.allstatepeterbilttrucks.com
Ron's Repair, Inc.	Worthington	507-343-4265	www.ronsrepairinc.com
MISSOURI			
4 State Trucks	Joplin	417-624-2900	www.4statetrucks.com
Graybill Chrome	Rock Porth	1-800-279-4288	www.graybillchrome.com
Horse & Buggy	California	573-796-1927	
Joplin 44 Petro Truck Stop	Joplin	417-624-3400	www.joplin44.com
Oak Grove 70 Petro Truck Stop	Oak Grove	816-690-4455	www.oakgrovepetro.com
Peterbilt of Joplin	Joplin	417-623-0222	www.tlgtrucks.com
Peterbilt of Sikeston	Sikeston	573-471-6181	
Peterbilt of Springfield	Strafford	417-865-5355	www.tlgtrucks.com
Tag Truck Center	Sikeston	573-471-7100	www.tagtruckcenter.com
MONTANA			
Montana Peterbilt - Missoula Location	Missoula	406-721-6100	www.montanapeterbilt.com
MotorPower KW	Great Falls	800-823-4848	www.mtrpwr.com
NEBRASKA			
Full Throttle Truck & Trailer Repair	Columbus	402-563-9199	
MHC Kenworth - Omaha	Omaha	844-438-5904	www.mhc.com
Nebraska Peterbilt	Grand Island	308-382-1044	www.nebraskapeterbilt.com
Peterbilt of Lincoln	Lincoln	402-858-8400	www.pbtruck.com
Peterbilt of Norfolk	Norfolk	402-844-4749	www.pbtruck.com
Truck Center Companies - Columbus	Columbus	402-564-7060	www.truckcentercompanies.com
NEW HAMPSHIRE			
Berube's Truck Accessories	Bow	603-224-7370	www.berubes.com
NEW JERSEY			
Elizabeth Truck Center - 878 North Avenue East	Elizabeth	908-355-8800	www.elizabethtruckcenter.com
NEW YORK			
Champlain Peterbilt	Champlain	518-298-3835	www.champlainpeterbilt.com
Elizabeth Truck Center - 40 Corporate Dr	Holtsville	631-307-9600	www.elizabethtruckcenter.com
Elizabeth Truck Center - 528 Industrial Loop W	Staten Island	718-948-6422	www.elizabethtruckcenter.com
King of Chrome	Montgomery	845-784-1706	
NORTH CAROLINA			
Kenly 95 Petro Truck Stop	Kenly	919-284-5121	www.petrotruckstops.com
Piedmont Peterbilt, LLC	Greensboro	336-668-3050	www.piedmontpeterbilt.com
NORTH DAKOTA			
Allstate Peterbilt of Grand Forks	Grand Forks	701-402-3026	www.allstatepeterbilt.com
Allstate Peterbilt of Jamestown	Jamestown	701-952-6890	www.allstatepeterbilt.com
Allstate Peterbilt of Williston	Williston	701-774-0225	www.allstatepeterbilt.com

OHIO			
Allstate Peterbilt of Findlay	Findlay	419-423-3441	www.allstatepeterbilt.com
Capital City Chrome and Customs	Pataskala	740-964-2766	www.capitalcitychrome.com
Chrome Depot Inc	Mantua	330-274-3180	www.chromedepot.com
Iowa 80/ Truckomat	Hebron	740-467-2818	
OKLAHOMA			
Bells and Whistles Chrome Shop	Oklahoma City	405-470-8400	www.bellsandwhistles.com
Rush Truck Center - Tulsa Location	Tulsa	918-447-8630	www.rushtruckcenters.com
Wilkins Oklahoma Truck Supply	Tonkawa	800-299-5308	www.wilkinstruckchrome.com
ONTARIO			
Chrome Supply Warehouse	Belleville	613-966-0990	www.chromesupplywarehouse.com
OREGON			
DSU Peterbilt & GMC Truck, Inc.	Portland	1-800-556-4998	www.dsutrucks.com
Hub City Chrome	Chiloquin	541-783-2995	www.hubcitychrome.com
PENNSYLVANIA			
Hunter Keystone Peterbilt - Lancaster Location	Lancaster	717-299-6630	www.huntertrucksales.com
SASKACHEWAN			
Cervus Equipment Peterbilt	Saskatoon	306-242-3411	www.cervusequipment.com
SOUTH DAKOTA			
Peterbilt of Sioux Falls	Sioux Falls	605-338-0040	www.peterbiltofsiouxfalls.com
Sioux Falls Kenworth	Sioux Falls	605-332-7112	www.northamericantrucktrailer.com
TENNESSEE			
Chrome Country	Smyrna	615-220-7730	www.chromecountry.com
Chrome Shack	White Pine	865-674-7051	www.chromeshack.com
Fitzgerald Glider Kits - Byrdstown, TN	Byrdstown	888-250-2570	www.fitzgeraldgliderkits.com
Fitzgerald Glider Kits - Crossville, TN	Crossville	888-250-2570	www.fitzgeraldgliderkits.com
Peterbilt Truck Center of Memphis	Memphis	1-800-824-7992	www.peterbilttrkcenters.com
TEXAS			
Elite Truck Accessories	Dallas	214-291-1676	www.etatexas.com
Elite Truck Accessories South	Dallas	214-416-8080	www.etatexas.com
Empire Chrome - San Antonio Location	Converse	210-661-6474	www.empirechromeshop.com
Falls Truck Center	Wichita Falls	940-723-9274	www.fallstruckcenter.com
K D Truck Parts	Euless	1-800-842-9942	www.kdchrome.com
Rush Truck Center - DFW Location	Irving	469-706-5200	www.rushtruckcenters.com
Rush Truck Center - Fort Worth Location	Fort Worth	817-625-9500	www.rushtruckcenters.com
Rush Truck Center - Texarkana Location	Nash	903-336-6800	www.rushtruckcenters.com
Rush Truck Center - Tyler Location	Tyler	903-617-2500	www.rushtruckcenters.com
Texas Chrome Shop	Atacosa	210-622-5757	www.texaschromeshop.com
UTAH			
Jackson Group Peterbilt - Salt Lake City Location	Salt Lake City	801-486-8781	www.jgpete.com
Jackson Group Peterbilt Vernal, Utah	Vernal	435-781-233	www.jgpete.com
VIRGINIA			
Fitzgerald Peterbilt of Bristol	Bristol	276-429-4400	www.fitzgeraldpeterbilt.com
Fitzgerald Peterbilt of Fancy Gap	Fancy Gap	276-728-2573	www.fitzgeraldpeterbilt.com
WASHINGTON			
A & L Truck Supply - Union Gap Location	Union Gap	509-452-8989	www.aandltrucksupply.com
WEST VIRGINIA			
Martins Peterbilt	Hurricane	855-898-8333	www.martinspeterbilt.com
WISCONSIN			
Allstate Peterbilt of Eau Claire	Eau Claire	715-718-6215	www.allstatepeterbilt.com
Allstate Peterbilt of Tomah	Tomah	608-372-0917	www.allstatepeterbilt.com
Amcan Truck Parts	Pewaukee	262-806-3322	www.amcantruckparts.com
Big Rig Chrome Shop	Oshkosh	920-769-0611	www.bigrigchromeshop.com
Homer's Custom Chrome Shop	Milwaukee	414-355-4001	www.homerscustomchromeshop.com
JX Peterbilt - Green Bay	De Pere	1-800-813-3613	www.jxe.com
JX Peterbilt - Madison	Madison	1-800-813-2513	www.jxe.com
JX Peterbilt - Mineral Point	Mineral Point	844-303-1590	www.jxe.com
JX Peterbilt - Waukesha	Pewaukee	1-800-558-0524	www.jxe.com

WARRANTY & SHIPPING POLICIES

GENERAL POLICY

All warranty/return claims must be requested by one of our authorized dealers.

WARRANTY ON PRODUCTS

Warranty claims may require digital photos for verification purposes. All Stainless Steel and Aluminum Products carry a 1-year from date of purchase warranty that protects against defective workmanship. Any modified, improperly installed or installation considered as a "Non-Standard Application will void any warranty.

RETURN OF PRODUCT

All products returned must be requested by one of our authorized dealers and must approved by Iowa Customs before any shipment is returned. Please contact your dealer to request an RMA form. Please write the RMA number on all boxes.

RE-STOCKING FEE

- Dealers - If product hasn't moved in 6 to 12 months, Iowa Customs will accept return of products provided that an offsetting order of equal dollar amount is placed. If no offsetting order is placed, a 20% restocking fee applies.
- Consumer – A 20% restocking fee applies. Keep in mind that Iowa Customs cannot guarantee a full credit for any items that are returned damaged and/or incomplete. Please take time to re-package products as failure to do so risks partial or zero credit.
- Returns are processed in the form of Company credit.

DAMAGED SHIPMENTS

For any Damaged Shipments;

- Sign for the shipment as "Damaged" on all delivery paperwork.
- Do Not Disassemble pallet. Take clear photos and send them to an Iowa Customs Service Representative. Contact us at 712-792-6443.
- Do Not Discard any items unless authorized by Iowa Customs.

